



Peace River Regional District Zoning Bylaw No. 1000, 1996

Schedule "A" - Official Zoning Maps

– Consolidated January 2017 for Convenience Only –

1. This is schedule A of Bylaw No. 1000, 1996, being the Official Zoning Map Referred to in Section 33 of the said Bylaw and forming part of the Peace River Regional District Zoning Bylaw No. 1000, 1996.

Original Signed by Phil Cove
Deputy Secretary

2. Schedule A consists of the following maps.

Map 1 – North Peace Index Map

Maps 2 – 6 REPEALED by Bylaw No. 1343, 2001

Map 7 – Mile 73

Map 8 – Wonowon

Map 9 – Prespatou

Map 9A– Buick Creek Area

Map 9B– Altona

Map 10– Montney/North Pine/Rose Prairie

Map 11– Cecil Lake

Map 12– Goodlow/Clearview

Map 13– Milligan Creek

Map 14– Upper Halfway

Map 15– Pink Mountain

Map 16– Mile 121

Map 17– Hilltop Communal Farm

Map 18– Evergreen Communal Farm

Map 19– Blueberry Communal Farm

Map 20– Headwaters Communal Farm

Map 21– Whiplash Communal Farm

Map 22– Blair Valley Farm Society

Map 23– Hudson's Hope Highway 9–84–21

Map 24– Blueberry River Area

Map 25– Flatrock Area

3. All areas not identified on Schedule "A" shall be considered to have zoning designation of A2

**NORTH PEACE
ZONING BY-LAW
INDEX MAP**

MAP - 1

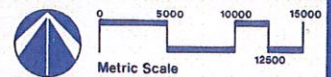
Bylaw 1000, 1996

ORIGINAL SIGNED BY P. COVE
DEPUTY SECRETARY

AMENDMENTS

- Bylaw 1117 - A-2 to LF
- Bylaw 1179 - A-2 to R-2
- Bylaw 1220 - A-2 to A-1
- Bylaw 1268 - A-2 to A-1
- Bylaw 1288 - A-2 to P
- Bylaw 1298 - A-2 to P
- Bylaw 1355 - A-2 to A-1
- Bylaw 1574 - A-2 to I-1
- Bylaw 1721 - A-2 to R-2
- Bylaw 1859 - A-2 to P
- Bylaw 2021 - A-2 to P
- Bylaw 2023 - A-2 to CF
- Bylaw 2101 - A-2 to R-3
- Bylaw 2113 - A-2 to P
- Bylaw 2174 - A-2 to I-4
- Bylaw 2315 - A-2 to P

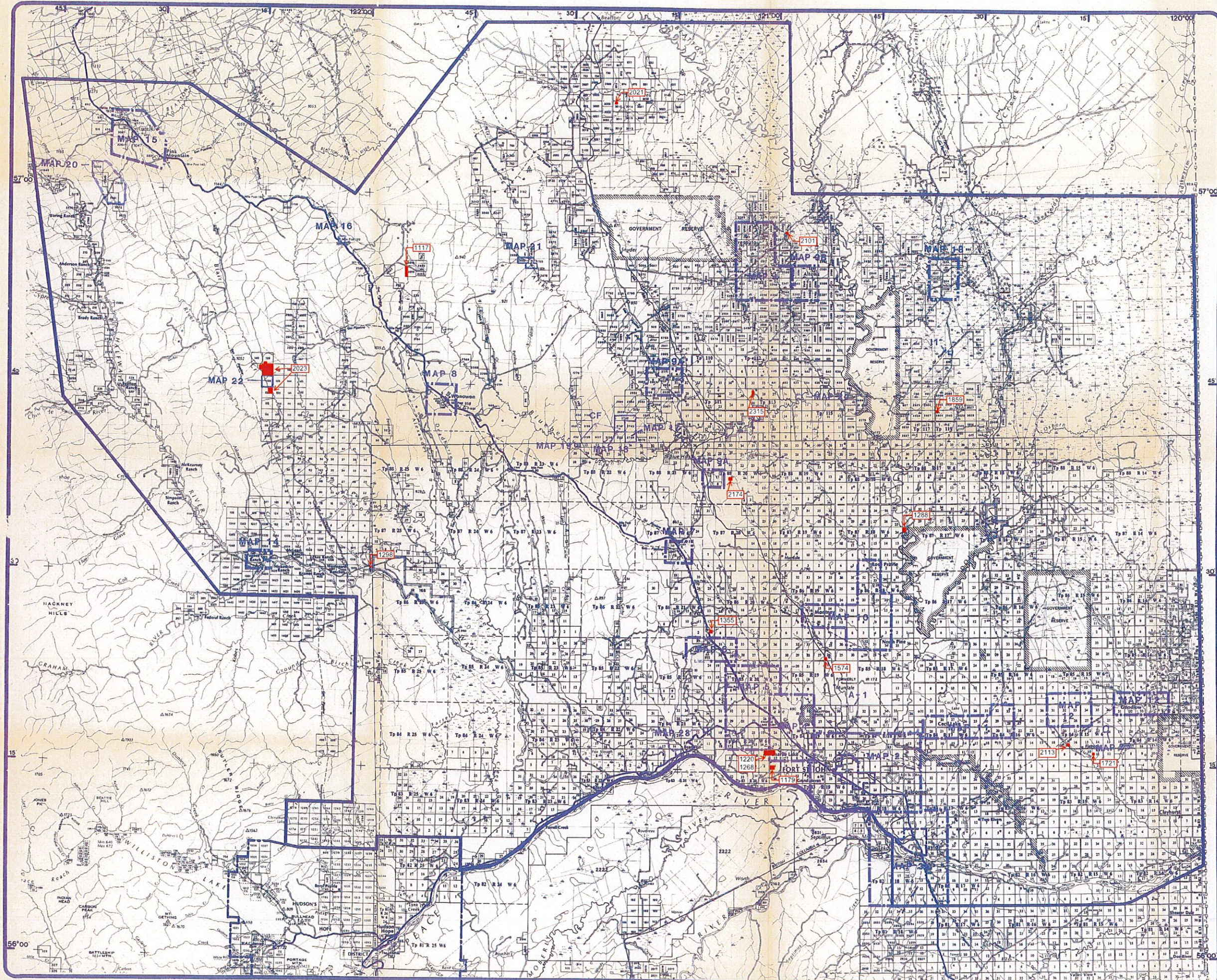
- Plan Area Boundary
- Park Boundary
- Less than 16 Acres
- Other Government Reserve
- Indian Reserve
- International or Interprovincial Boundary and Monument
- Municipal Boundary
- Community or Locality
- Roads
- Highway with Route Number
- Seismic
- Trail
- Railway
- Forest Service Lookout
- Campground (Government)
- Mine (Operating)
- Gas Well
- Oil Well
- Historic Monument
- Post Office
- School
- Hospital
- Survey Control Station (Main)
- Elevation in metres above mean sea level
- Swamp or Marsh
- Intermittent Lake or Seasonal Inundation
- Mud, Sand or Gravel



prepared for:
**Peace River-Liard
Regional District**

prepared by:
USI urban systems ltd.
consulting planners and engineers

Revised date: 26/7/18



**OFFICIAL ZONING
MAPS**

MAP 7 - MILE 73

ORIGINAL SCALE 1:7500
REVISION DATE: NOVEMBER, 1995



ZONES

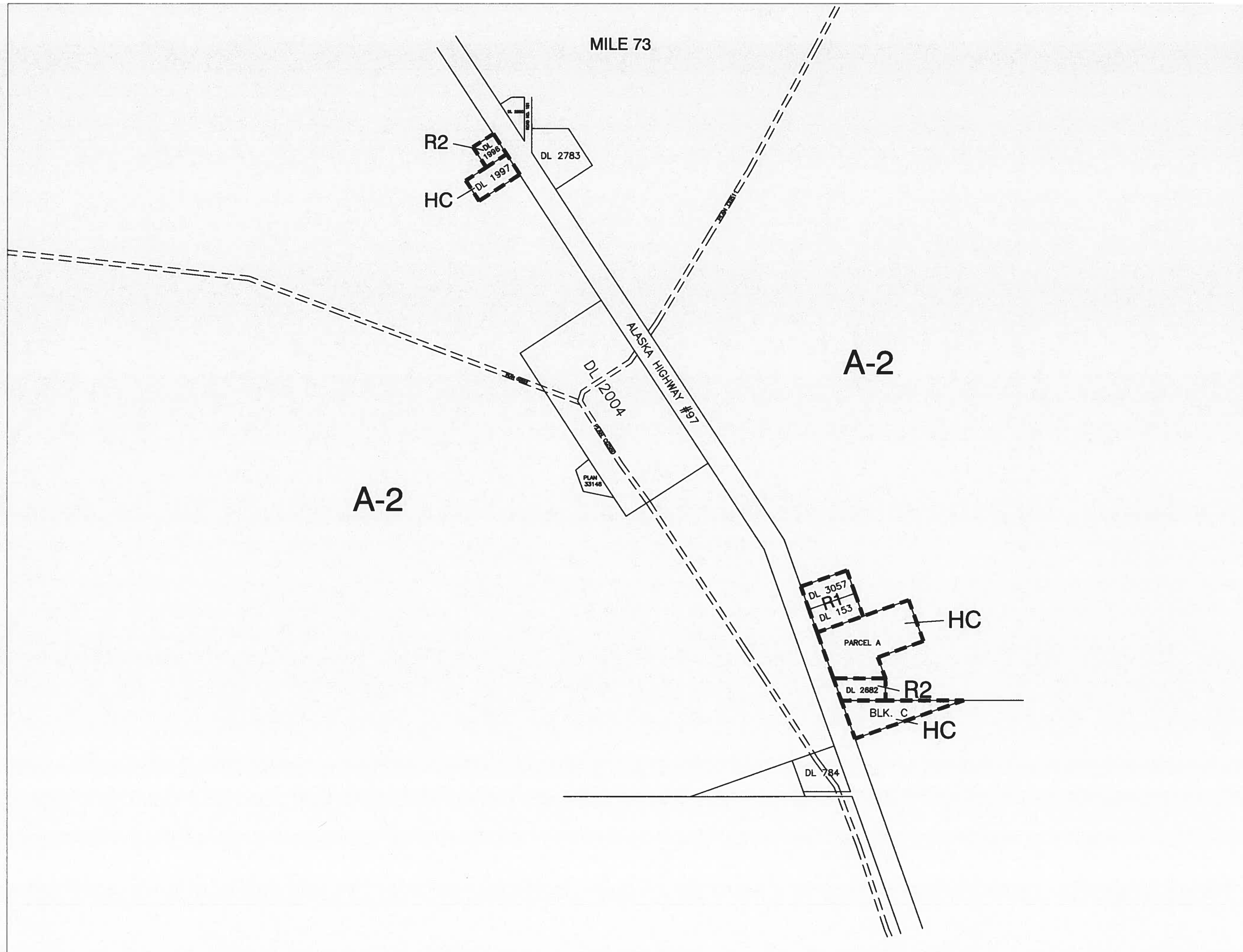
- A-1 AGRICULTURAL 1
- A-2 AGRICULTURAL 2
- C-1 COMMERCIAL 1
- R-1 RESIDENTIAL 1
- R-2 RESIDENTIAL 2
- R-3 RESIDENTIAL 3
- R-4 RESIDENTIAL 4
- MH MANUFACTURED HOME PARK
- NC NEIGHBOURHOOD COMMERCIAL
- HC HIGHWAY COMMERCIAL
- RC REGIONAL COMMERCIAL
- I-1 INDUSTRIAL 1
- I-2 INDUSTRIAL 2
- I-3 AGRICULTURAL INDUSTRIAL ZONE
- I-4 OIL & GAS PRODUCTION
- AP AIRPORT INDUSTRIAL
- LF LAND FARM
- P PUBLIC / INSTITUTIONAL

This is Schedule 'A' of Bylaw No. 1000, 1996, being the Official Zoning Map referred to in Section 33 of the said Bylaw and forming part of the Peace River Regional District Zoning Bylaw No. 1000, 1996.

Original signed by P. Cove
Deputy Secretary

AMENDMENTS

BY-LAW NO.	DATE	SIGNATURE



OFFICIAL ZONING MAP

SCHEDULE A
ZONING BYLAW NO. 1000, 1996
MAP #: 8 - Wonowon

ZONES

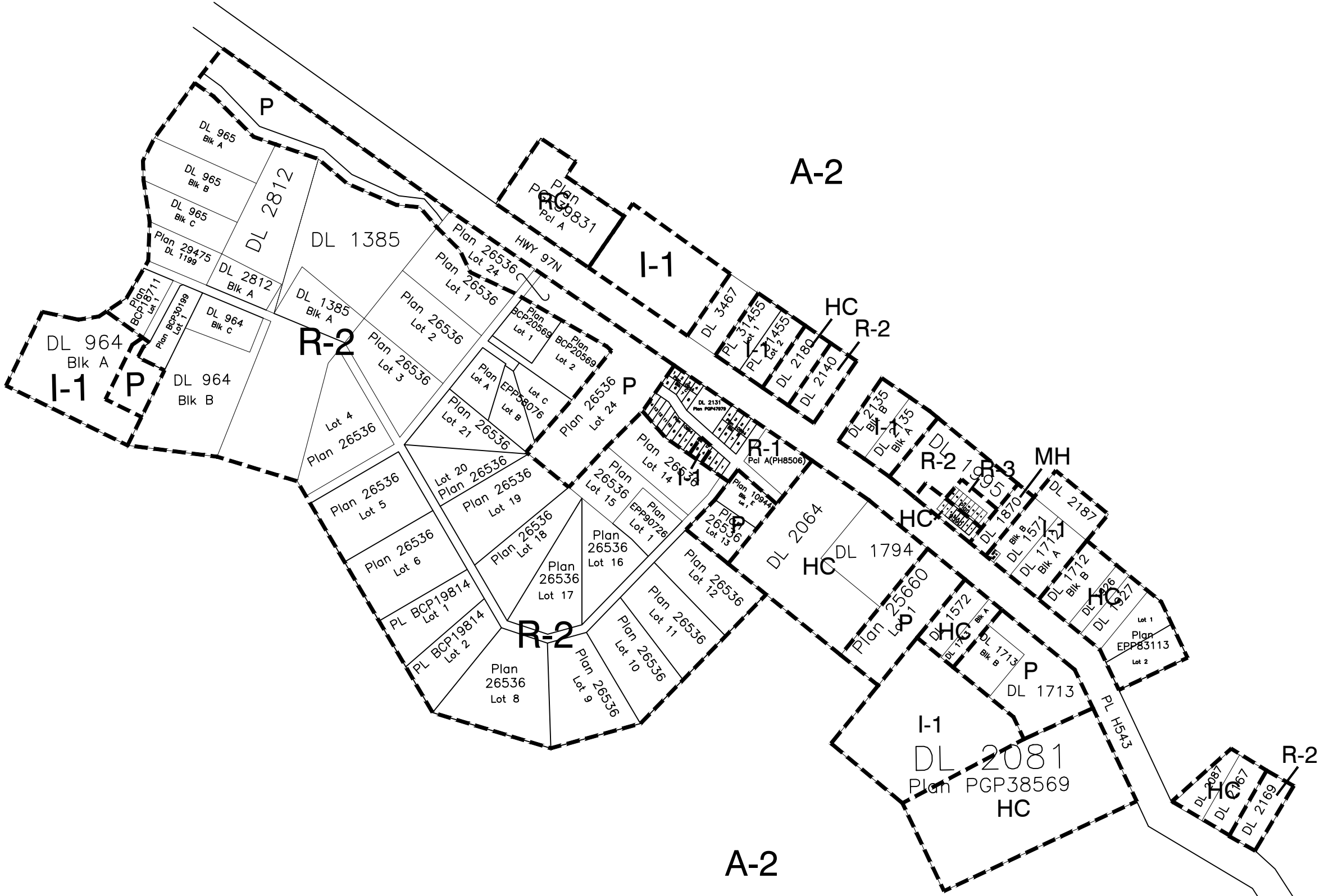
- A-1 AGRICULTURAL 1
- A-2 AGRICULTURAL 2
- CF COMMUNAL FARMS
- R-1 RESIDENTIAL 1
- R-2 RESIDENTIAL 2
- R-3 RESIDENTIAL 3
- R-4 RESIDENTIAL 4
- MH MANUFACTURED HOME PARK
- NC NEIGHBOURHOOD COMMERCIAL
- HC HIGHWAY COMMERCIAL
- RC REGIONAL COMMERCIAL
- I-1 INDUSTRIAL 1
- I-2 INDUSTRIAL 2
- I-4 OIL & GAS PRODUCTION
- AP AIRPORT INDUSTRIAL
- LF LAND FARM
- P PUBLIC / INSTITUTIONAL

This is Schedule 'A' of Bylaw No. 1000, 1996, being the Official Zoning Map referred to in Section 33 of the said Bylaw and forming part of the Peace River Regional District Zoning Bylaw No. 1000, 1996.

Original signed by P. Cove
Deputy Secretary

AMENDMENTS

BYLAW NO.	DATE	DESC. OF AMENDMENT	INT.
1101	12/07/07	From I-1 to M-H	SO
1765	12/07/07	From A-2 to I-1	SO
1772	12/07/07	From R-2 to I-1	SO
2030	12/03/12	From I-1 to HC	SO
2063	12/02/13	From R-2 to HC	SO
2294	12/14/18	From R-2 to HC	SO
2335	12/14/18	From I-1 to P	SO
2341	5/16/19	From R-2 to I-1	SO



NOT TO SCALE - FOR CONVENIENCE ONLY

Zoning_Bylaw_1000

REVISED DATE - 5/16/19

OFFICIAL ZONING MAP

SCHEDULE A
ZONING BYLAW NO. 1000, 1996
MAP #: 9 - PRESPATOU

ZONES

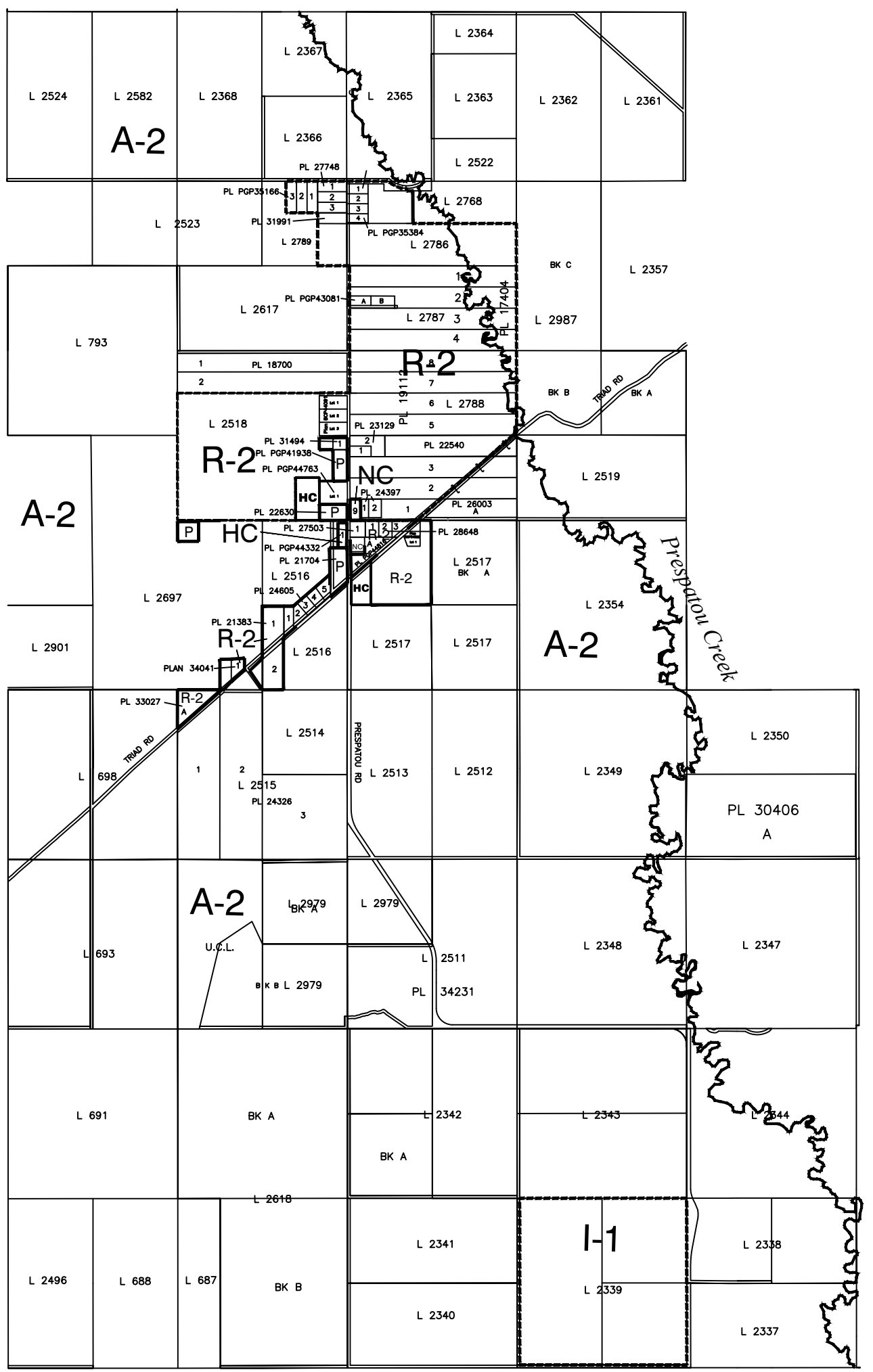
- A-1 AGRICULTURAL 1
- A-2 AGRICULTURAL 2
- CF COMMUNAL FARMS
- R-1 RESIDENTIAL 1
- R-2 RESIDENTIAL 2
- R-3 RESIDENTIAL 3
- R-4 RESIDENTIAL 4
- MH MANUFACTURED HOME PARK
- NC NEIGHBOURHOOD COMMERCIAL
- HC HIGHWAY COMMERCIAL
- RC REGIONAL COMMERCIAL
- I-1 INDUSTRIAL 1
- I-2 INDUSTRIAL 2
- I-4 OIL & GAS PRODUCTION
- AP AIRPORT INDUSTRIAL
- LF LAND FARM
- P PUBLIC / INSTITUTIONAL

This is Schedule 'A' of Bylaw No. 1000, 1996, being the Official Zoning Map referred to in Section 33 of the said Bylaw and forming part of the Peace River Regional District Zoning Bylaw No. 1000, 1996.

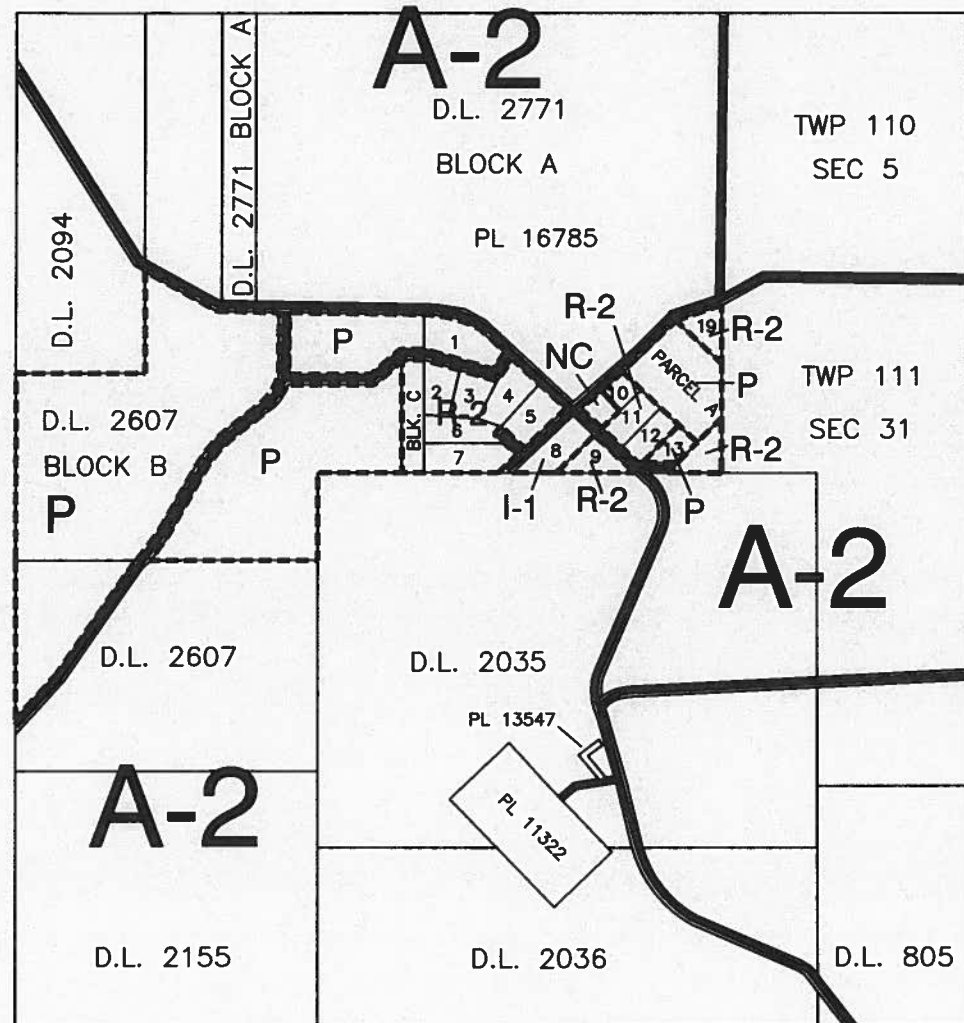
Original signed by P. Cove
 Deputy Secretary

AMENDMENTS

BYLAW NO.	DATE	DESC. OF AMENDMENT	INT.
1112	05/14/02	From A-2 to P	dha
1195	05/14/02	From A-2 to HC	dha
1435	02/17/03	From A-2 to R-2	dha
1723	12/07/07	From A-2 to R-2	SO
1843	12/01/09	From R-2 to HC	SO
1845	12/01/09	From A-2 to R-2	SO
1854	12/01/09	From A-2 to R-2	SO
1915	12/01/10	From A-2 to R-2	SO
2143	12/12/14	From A-2 to R-2 & HC	SO
2254	10/13/16	From A-2 to P	SO
2369	7/26/19	From A-2 to R-2	SO



BUICK CREEK



OFFICIAL ZONING MAP

SCHEDULE A
ZONING BYLAW NO. 1000, 1996
MAP #: 9A - Buick Creek Area

ZONES

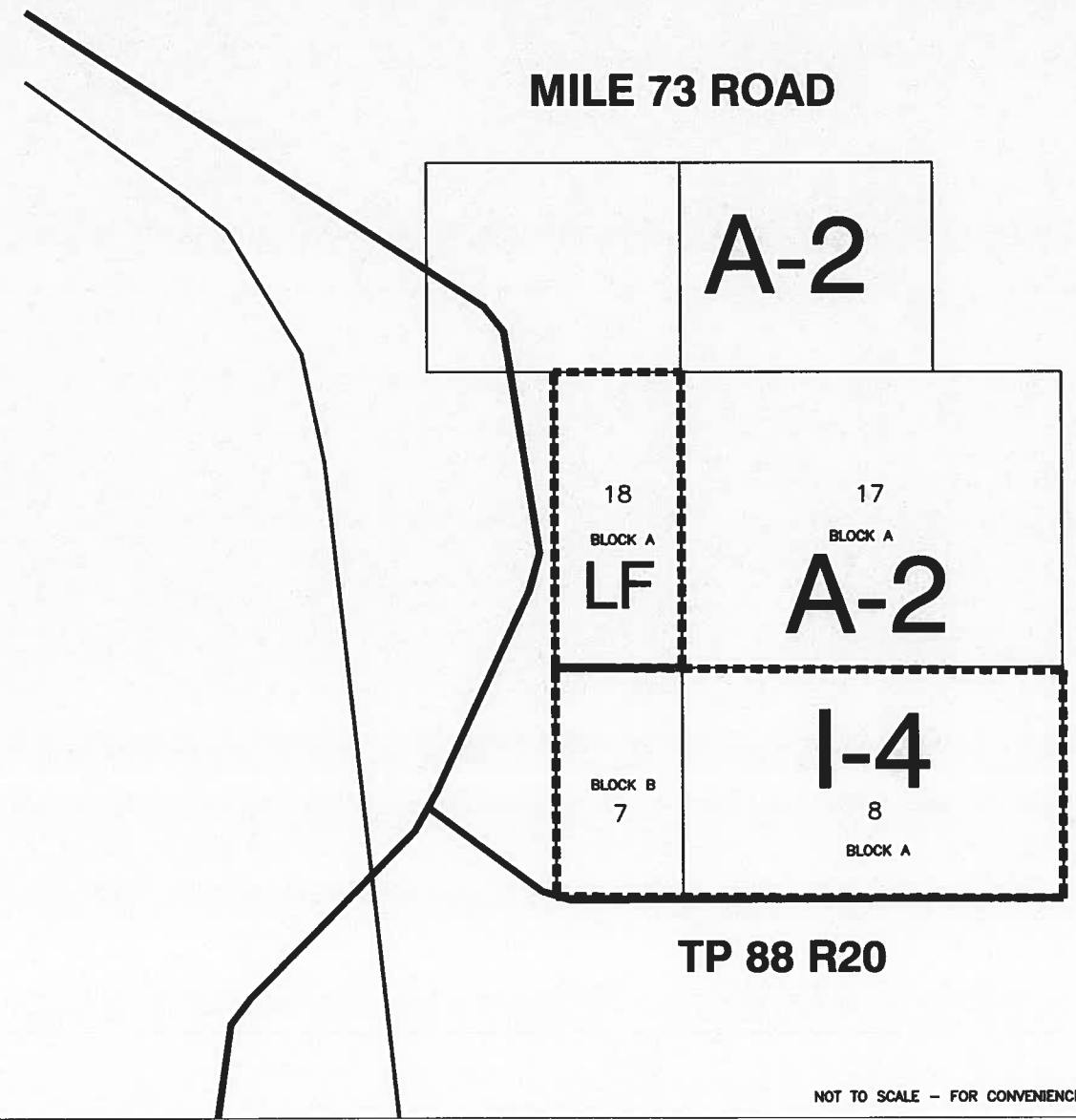
- A-1 AGRICULTURAL 1
- A-2 AGRICULTURAL 2
- CF COMMUNAL FARMS
- R-1 RESIDENTIAL 1
- R-2 RESIDENTIAL 2
- R-3 RESIDENTIAL 3
- R-4 RESIDENTIAL 4
- MH MANUFACTURED HOME PARK
- NC NEIGHBOURHOOD COMMERCIAL
- HC HIGHWAY COMMERCIAL
- RC REGIONAL COMMERCIAL
- I-1 INDUSTRIAL 1
- I-2 INDUSTRIAL 2
- I-4 OIL & GAS PRODUCTION
- AP AIRPORT INDUSTRIAL
- LF LAND FARM
- P PUBLIC / INSTITUTIONAL

This is Schedule 'A' of Bylaw No. 1000, 1996, being the Official Zoning Map referred to in Section 33 of the said Bylaw and forming part of the Peace River Regional District Zoning Bylaw No. 1000, 1996.

Original signed by P. Cove
 Deputy Secretary

AMENDMENTS

BYLAW NO.	DATE	DESC. OF AMENDMENT	INT.
1081	05/06/02	from A-2 to P	dha
1385	05/06/02	from P to I-4	dha
1463	12/07/07	from R-2 to I-1	SO



NOT TO SCALE - FOR CONVENIENCE ONLY



Zoning Bylaw 1000

REVISED DATE - 12/07/07

OFFICIAL ZONING MAP

SCHEDULE A
ZONING BYLAW NO. 1000, 1996
MAP #: 9B - ALTONA

ZONES

- A-1 AGRICULTURAL 1
- A-2 AGRICULTURAL 2
- CF COMMUNAL FARMS
- R-1 RESIDENTIAL 1
- R-2 RESIDENTIAL 2
- R-3 RESIDENTIAL 3
- R-4 RESIDENTIAL 4
- MH MANUFACTURED HOME PARK
- NC NEIGHBOURHOOD COMMERCIAL
- HC HIGHWAY COMMERCIAL
- RC REGIONAL COMMERCIAL
- I-1 INDUSTRIAL 1
- I-2 INDUSTRIAL 2
- I-4 OIL & GAS PRODUCTION
- AP AIRPORT INDUSTRIAL
- LF LAND FARM
- P PUBLIC / INSTITUTIONAL

This is Schedule 'A' of Bylaw No. 1000, 1996, being the Official Zoning Map referred to in Section 33 of the said Bylaw and forming part of the Peace River Regional District Zoning Bylaw No. 1000, 1996.

Original signed by P. Cove
Deputy Secretary

AMENDMENTS

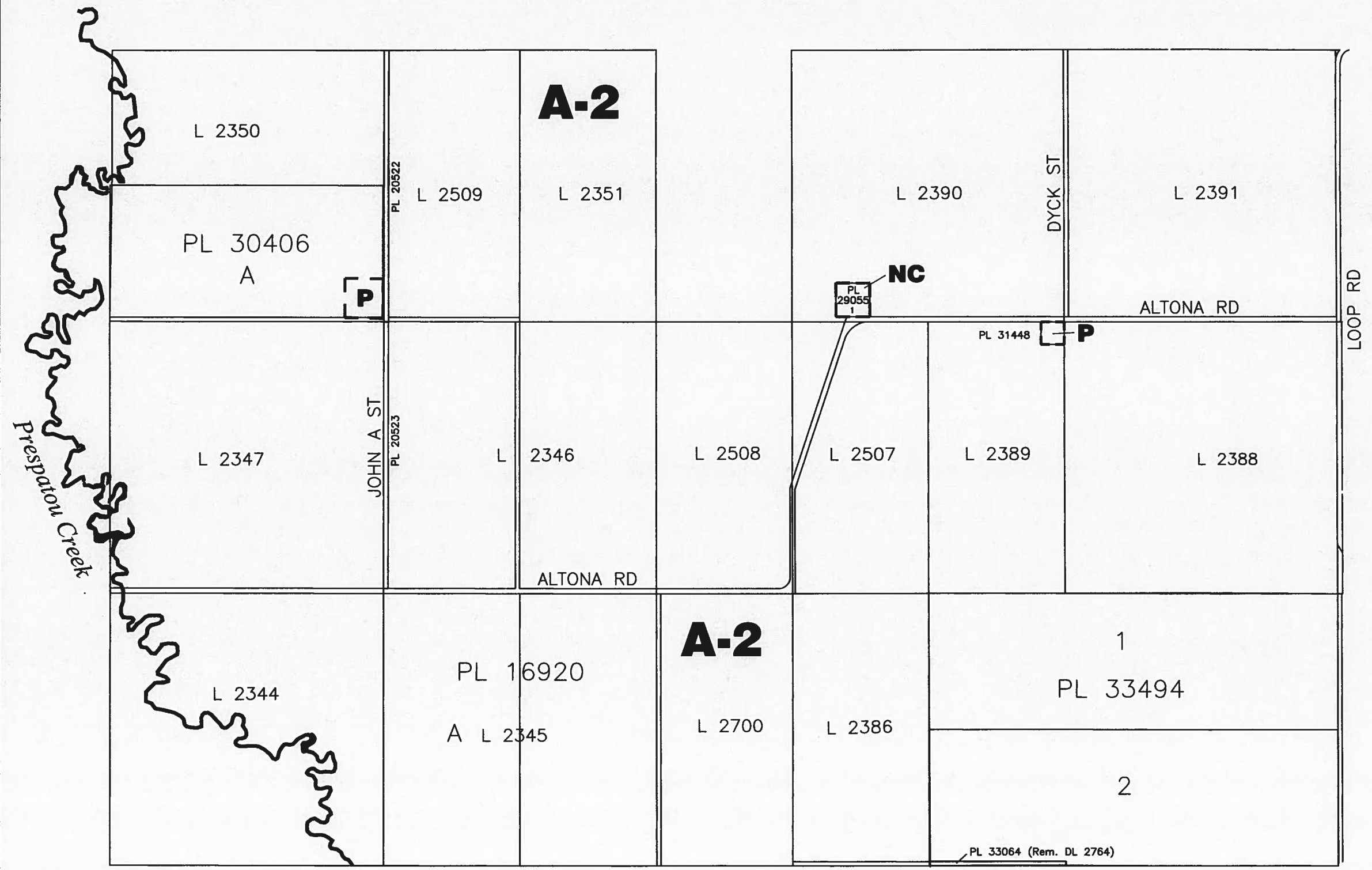
BYLAW NO.	DATE	DESC. OF AMENDMENT	INT.



NOT TO SCALE - FOR CONVENIENCE ONLY

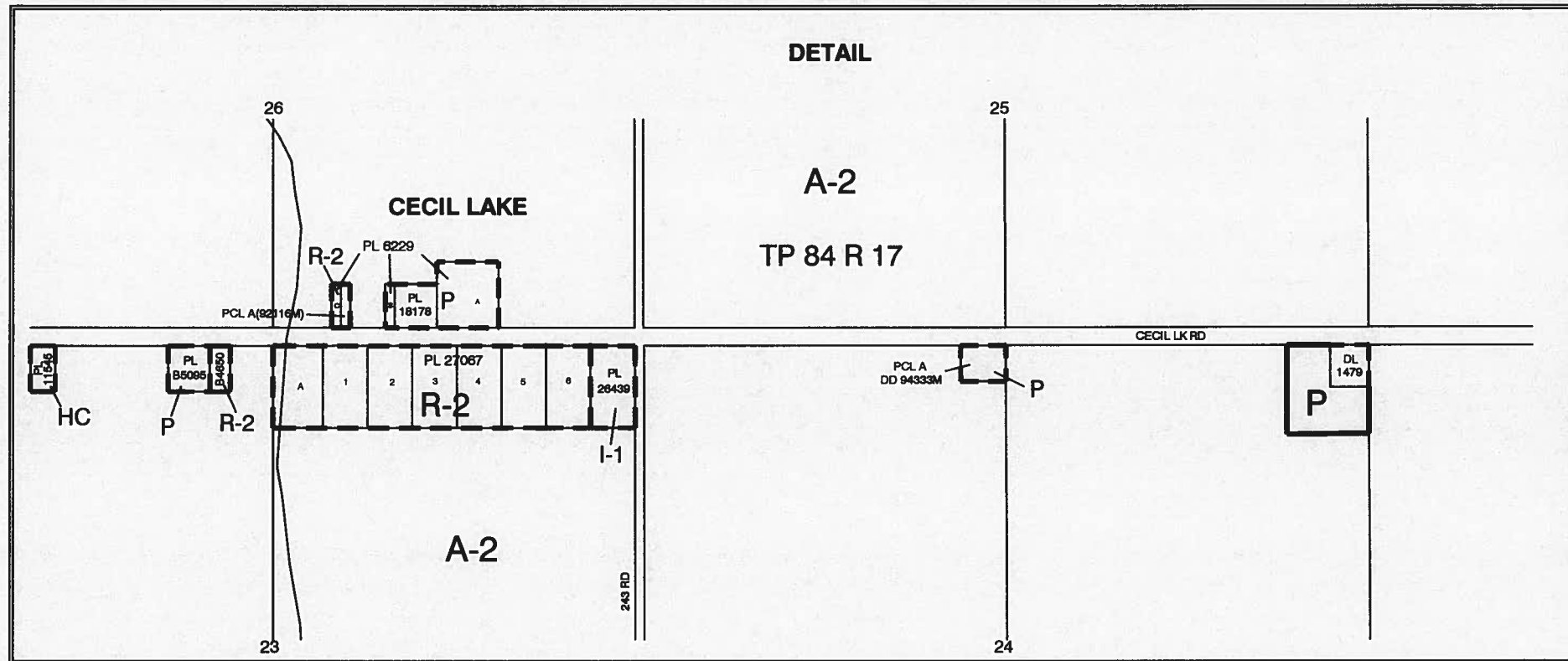
Zoning Bylaw 1000

REVISED DATE - 04/10/03



OFFICIAL ZONING MAP

SCHEDULE A
ZONING BYLAW NO. 1000, 1996
MAP #: 11 - Cecil Lake



ZONES

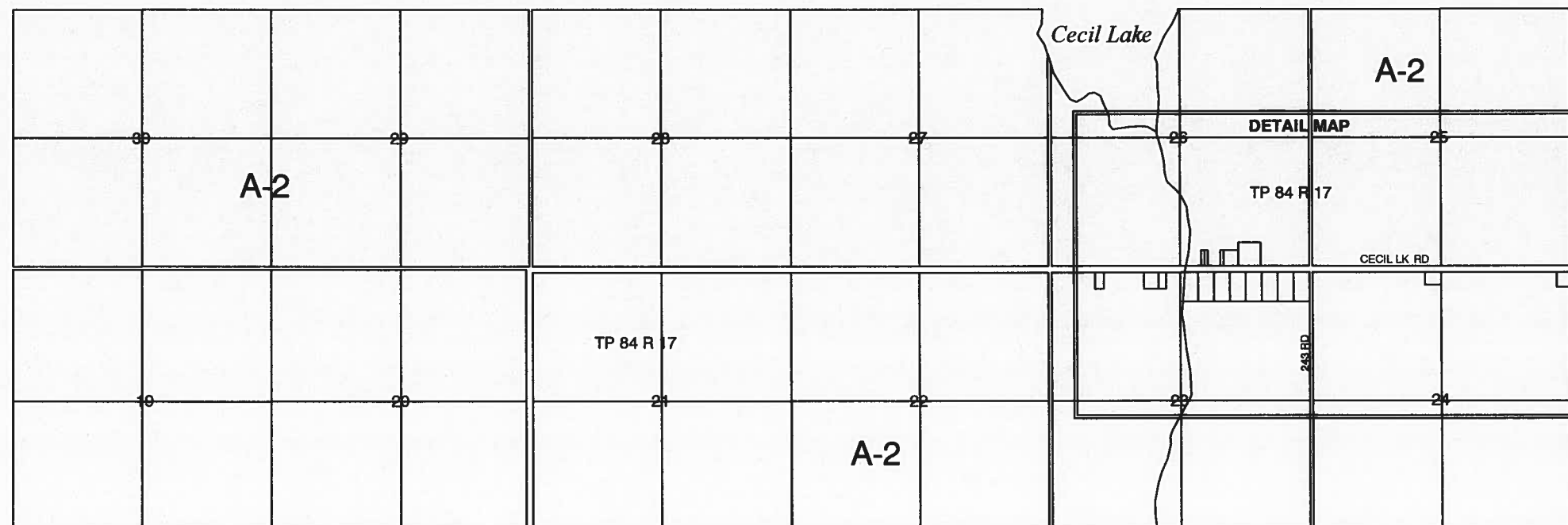
- A-1 AGRICULTURAL 1
- A-2 AGRICULTURAL 2
- CF COMMUNAL FARMS
- R-1 RESIDENTIAL 1
- R-2 RESIDENTIAL 2
- R-3 RESIDENTIAL 3
- R-4 RESIDENTIAL 4
- MH MANUFACTURED HOME PARK
- NC NEIGHBOURHOOD COMMERCIAL
- HC HIGHWAY COMMERCIAL
- RC REGIONAL COMMERCIAL
- I-1 INDUSTRIAL 1
- I-2 INDUSTRIAL 2
- I-4 OIL & GAS PRODUCTION
- AP AIRPORT INDUSTRIAL
- LF LAND FARM
- P PUBLIC / INSTITUTIONAL

This is Schedule 'A' of Bylaw No. 1000, 1996, being the Official Zoning Map referred to in Section 33 of the said Bylaw and forming part of the Peace River Regional District Zoning Bylaw No. 1000, 1996.

Original signed by P. Cove
Deputy Secretary

AMENDMENTS

BYLAW NO.	DATE	DESC. OF AMENDMENT	INT.
1989	12/07/11	From A-2 to P	SO
2141	12/12/14	From NC to R-2	SO



NOT TO SCALE - FOR CONVENIENCE ONLY

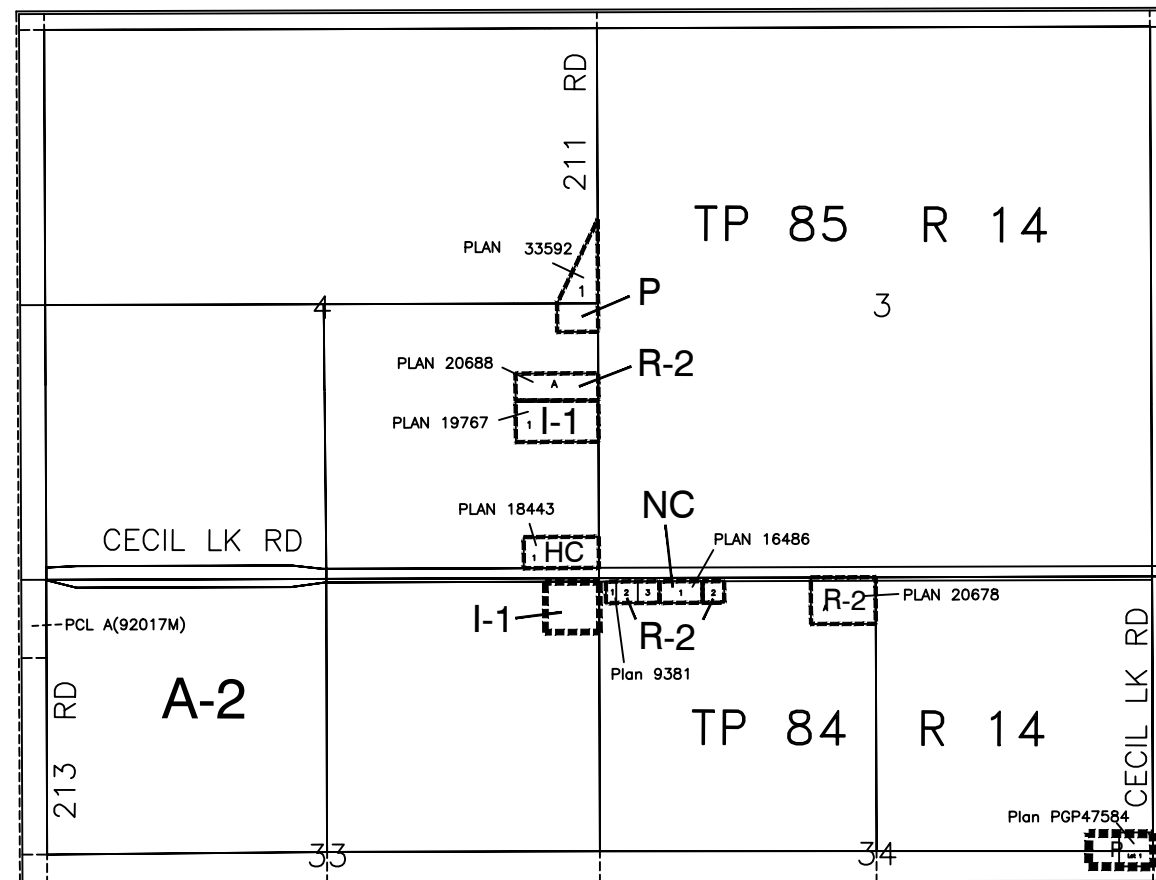
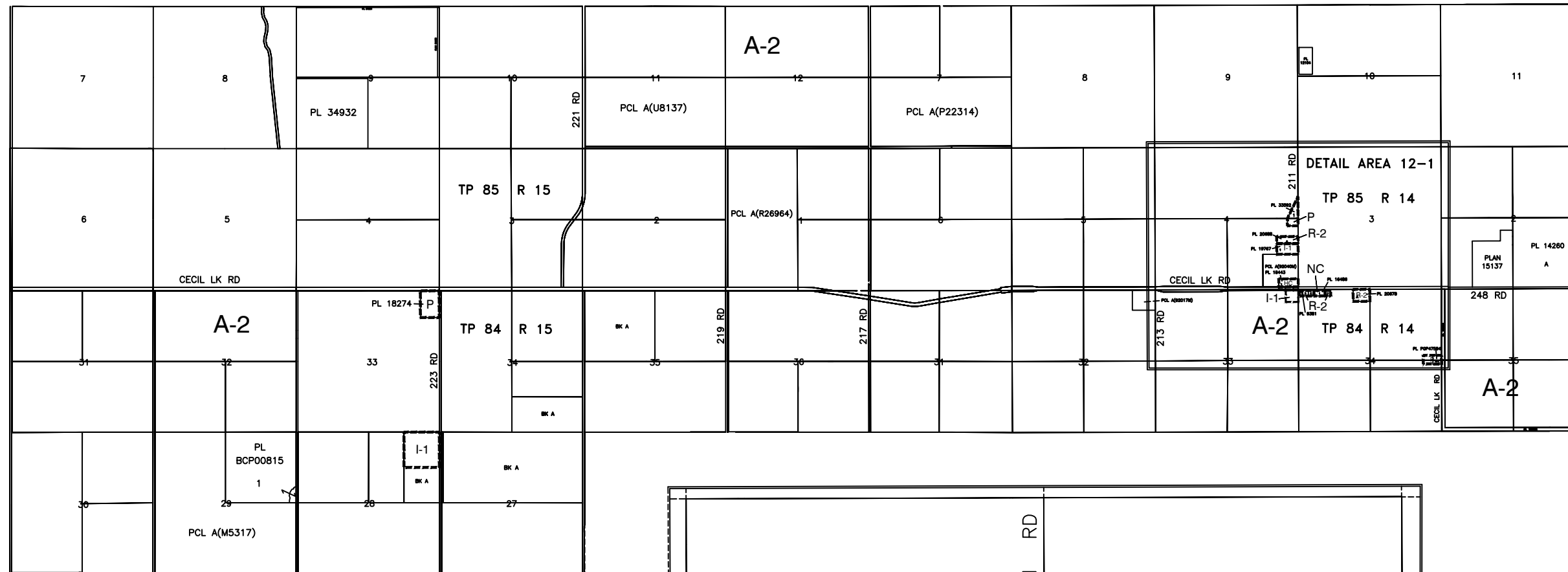


Zoning Bylaw 1000

REVISED DATE - 12/12/14

OFFICIAL ZONING MAP

SCHEDULE A
ZONING BYLAW NO. 1000, 1996
MAP #: 12 -
GOODLOW/CLEARVIEW



DETAIL AREA 12-1

ZONES

- A-1 AGRICULTURAL 1
- A-2 AGRICULTURAL 2
- CF COMMUNAL FARMS
- R-1 RESIDENTIAL 1
- R-2 RESIDENTIAL 2
- R-3 RESIDENTIAL 3
- R-4 RESIDENTIAL 4
- MH MANUFACTURED HOME PARK
- NC NEIGHBOURHOOD COMMERCIAL
- HC HIGHWAY COMMERCIAL
- RC REGIONAL COMMERCIAL
- I-1 INDUSTRIAL 1
- I-2 INDUSTRIAL 2
- I-4 OIL & GAS PRODUCTION
- AP AIRPORT INDUSTRIAL
- LF LAND FARM
- P PUBLIC / INSTITUTIONAL

This is Schedule 'A' of Bylaw No. 1000, 1996, being the Official Zoning Map referred to in Section 33 of the said Bylaw and forming part of the Peace River Regional District Zoning Bylaw No. 1000, 1996.

Original signed by P. Cove
 Deputy Secretary

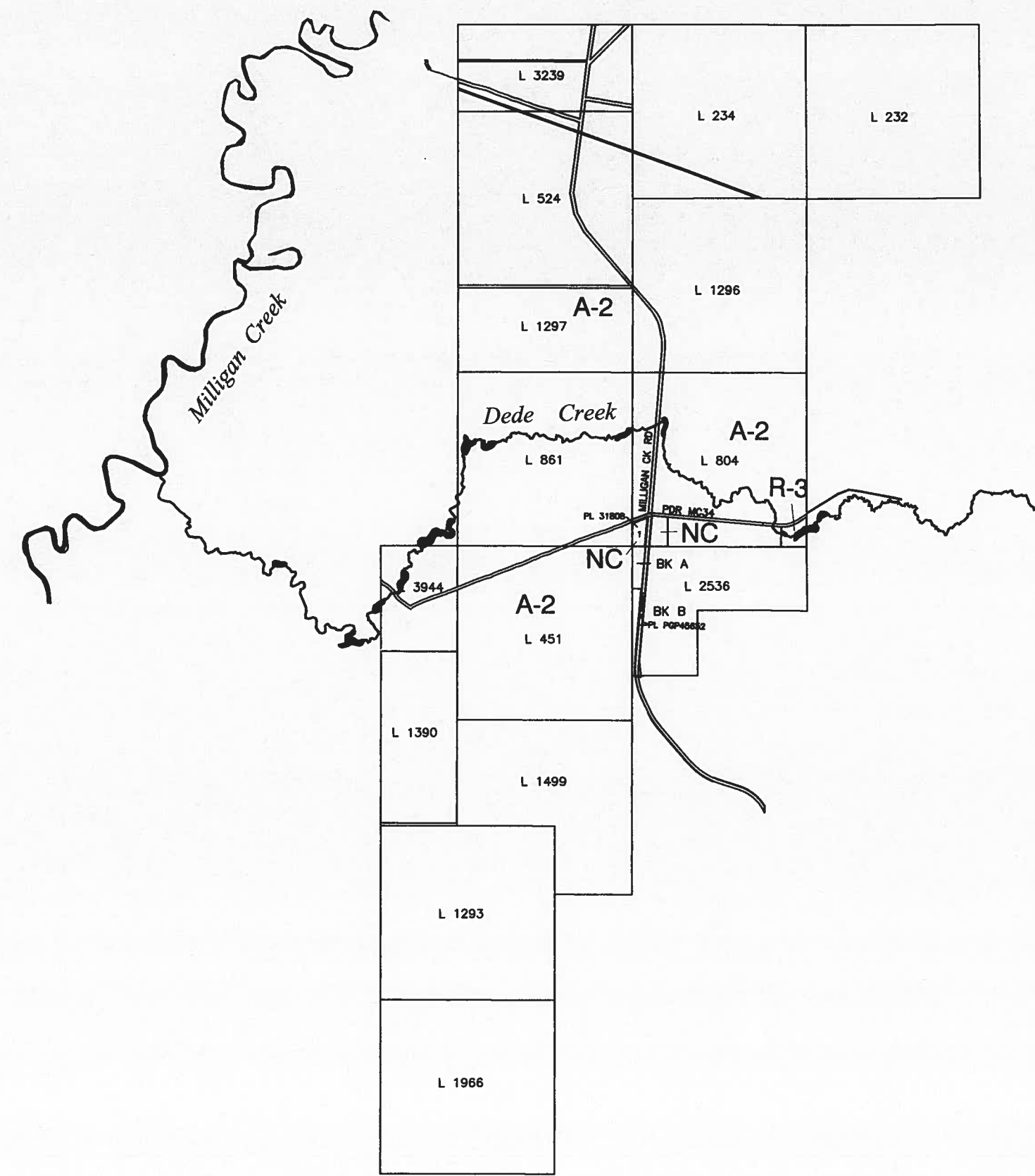
AMENDMENTS

BYLAW NO.	DATE	DESC. OF AMENDMENT	INT.
1339	05/21/02	From A-2 to P	dha
1768	12/01/08	From A-2 to I-1	SO
2327	3/28/19	From P to R-2	SO



OFFICIAL ZONING MAP

SCHEDULE A
ZONING BYLAW NO. 1000, 1996
MAP #: 13 - MILLIGAN CREEK



ZONES

- A-1 AGRICULTURAL 1
- A-2 AGRICULTURAL 2
- CF COMMUNAL FARMS
- R-1 RESIDENTIAL 1
- R-2 RESIDENTIAL 2
- R-3 RESIDENTIAL 3
- R-4 RESIDENTIAL 4
- MH MANUFACTURED HOME PARK
- NC NEIGHBOURHOOD COMMERCIAL
- HC HIGHWAY COMMERCIAL
- RC REGIONAL COMMERCIAL
- I-1 INDUSTRIAL 1
- I-2 INDUSTRIAL 2
- I-4 OIL & GAS PRODUCTION
- AP AIRPORT INDUSTRIAL
- LF LAND FARM
- P PUBLIC / INSTITUTIONAL

This is Schedule 'A' of Bylaw No. 1000, 1996, being the Official Zoning Map referred to in Section 33 of the said Bylaw and forming part of the Peace River Regional District Zoning Bylaw No. 1000, 1996.

Original signed by P. Cove
Deputy Secretary

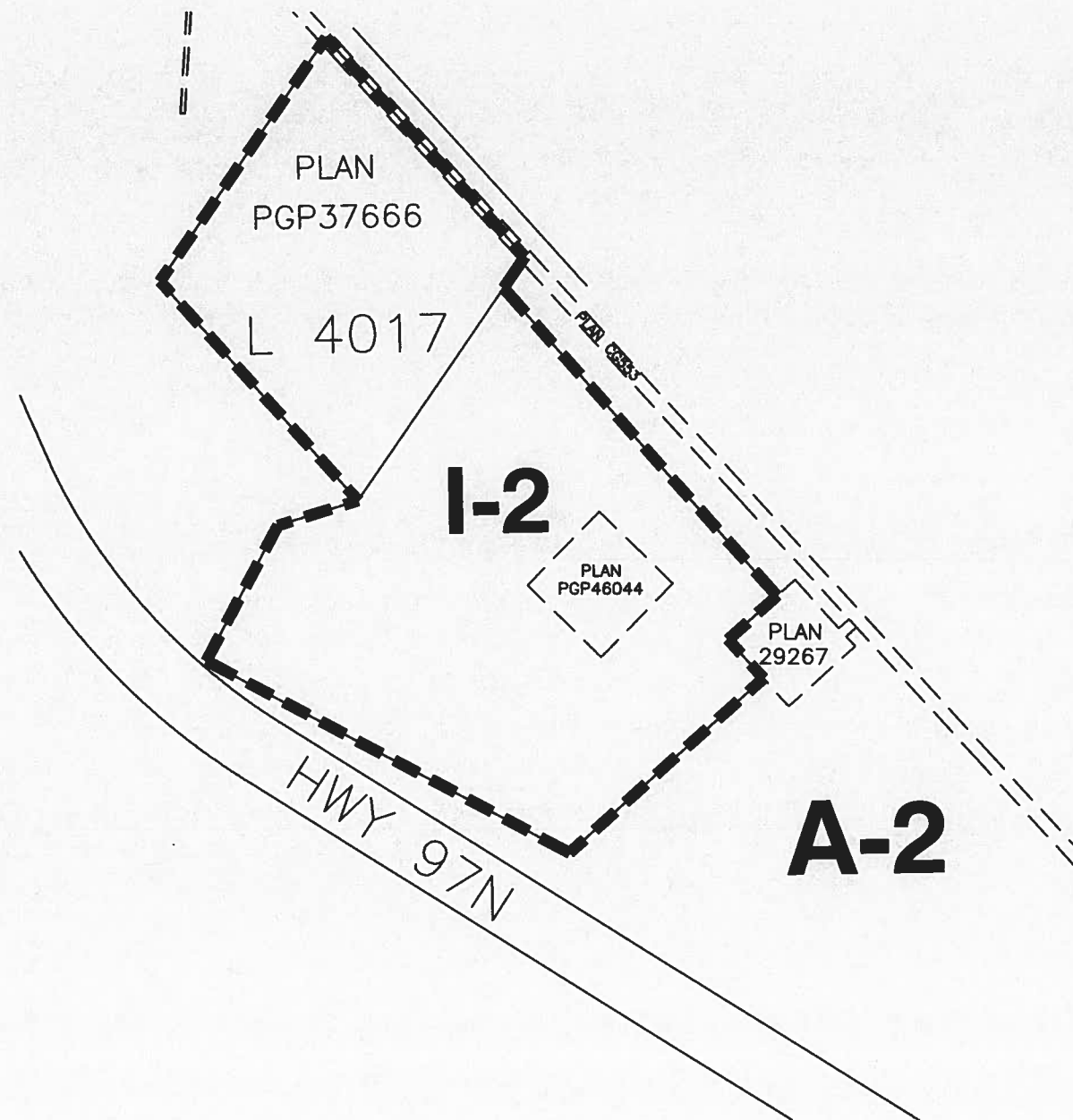
AMENDMENTS

BYLAW NO.	DATE	DESC. OF AMENDMENT	INT.
218D	12/12/14	From A-2 to R-3	SO



OFFICIAL ZONING MAP

SCHEDULE A
ZONING BYLAW NO. 1000, 1996
MAP #: 16 - Mile 121



ZONES

- A-1 AGRICULTURAL 1
- A-2 AGRICULTURAL 2
- CF COMMUNAL FARMS
- R-1 RESIDENTIAL 1
- R-2 RESIDENTIAL 2
- R-3 RESIDENTIAL 3
- R-4 RESIDENTIAL 4
- MH MANUFACTURED HOME PARK
- NC NEIGHBOURHOOD COMMERCIAL
- HC HIGHWAY COMMERCIAL
- RC REGIONAL COMMERCIAL
- I-1 INDUSTRIAL 1
- I-2 INDUSTRIAL 2
- I-4 OIL & GAS PRODUCTION
- AP AIRPORT INDUSTRIAL
- LF LAND FARM
- P PUBLIC / INSTITUTIONAL

This is Schedule 'A' of Bylaw No. 1000, 1996, being the Official Zoning Map referred to in Section 33 of the said Bylaw and forming part of the Peace River Regional District Zoning Bylaw No. 1000, 1996.

Original signed by P. Cove
Deputy Secretary

AMENDMENTS

BYLAW NO.	DATE	SIGNATURE	INT.

 Peace River
Regional District



**OFFICIAL ZONING
MAPS**

MAP 17 - HILLTOP COMMUNAL FARM



ORIGINAL SCALE 1:7500
REVISION DATE: NOVEMBER, 1995

ZONES

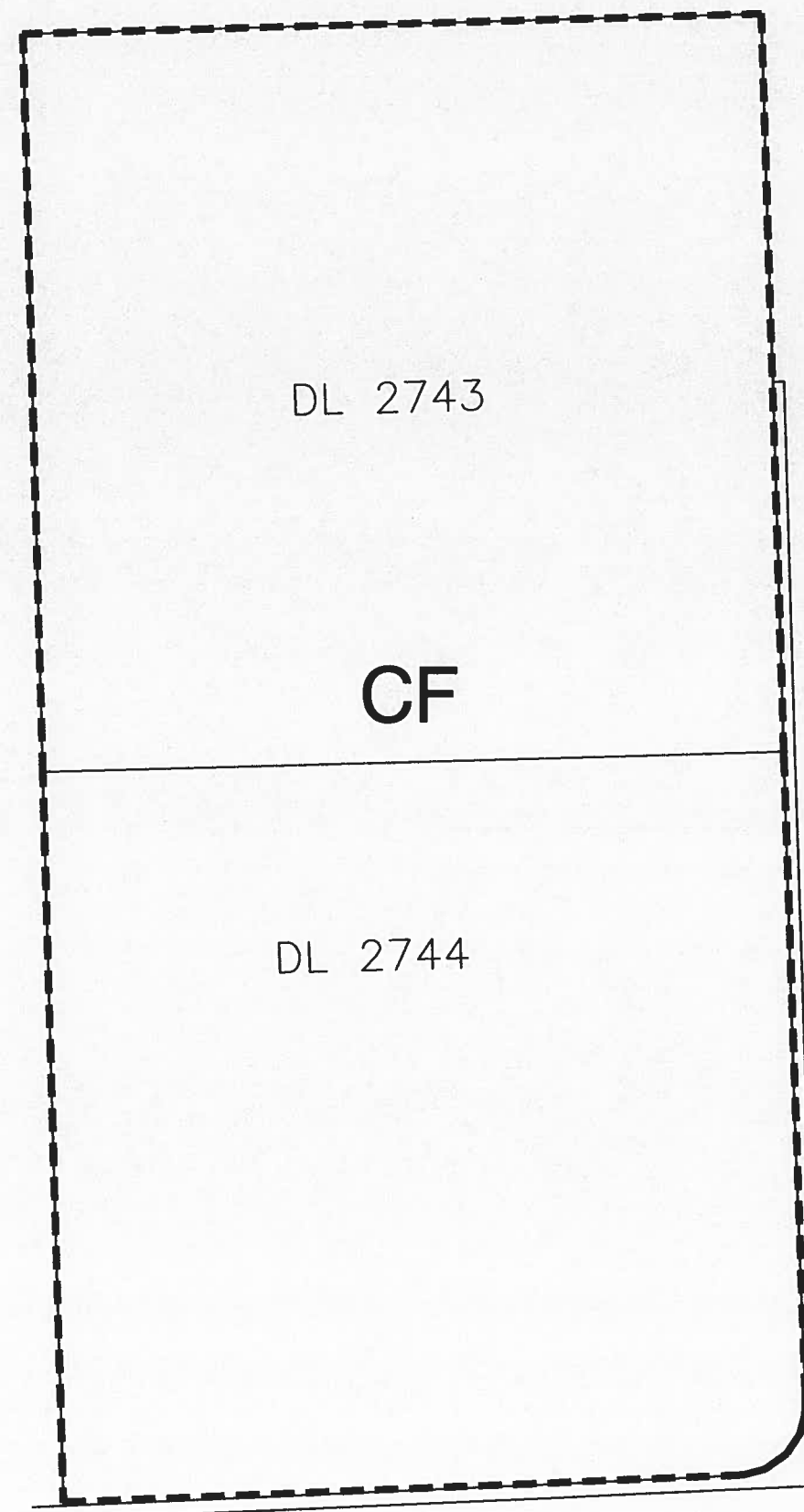
- A-1 AGRICULTURAL 1
- A-2 AGRICULTURAL 2
- C-1 COMMUNAL FARMS
- RR-1 RESIDENTIAL 1
- RR-2 RESIDENTIAL 2
- RR-3 RESIDENTIAL 3
- RR-4 RESIDENTIAL 4
- MH1 MANUFACTURED HOME PARK
- NH NEIGHBOURHOOD COMMERCIAL
- HC HIGHWAY COMMERCIAL
- RC REGIONAL COMMERCIAL
- I-1 INDUSTRIAL 1
- I-2 INDUSTRIAL 2
- I-3 AGRICULTURAL INDUSTRIAL ZONE
- I-4 OIL & GAS PRODUCTION
- AF AIRPORT INDUSTRIAL
- LF LAND FARM
- P PUBLIC / INSTITUTIONAL

This is Schedule 'A' of Bylaw No. 1000, 1996, being the Official Zoning Map referred to in Section 33 of the said Bylaw and forming part of the Peace River Regional District Zoning Bylaw No. 1000, 1996.

Original signed by P. Cove
Deputy Secretary

AMENDMENTS

BY-LAW NO.	DATE	SIGNATURE



OFFICIAL ZONING
MAPS

MAP 18 - EVERGREEN COMMUNAL FARM

ORIGINAL SCALE 1:10000
REVISION DATE: JANUARY, 1996



ZONES

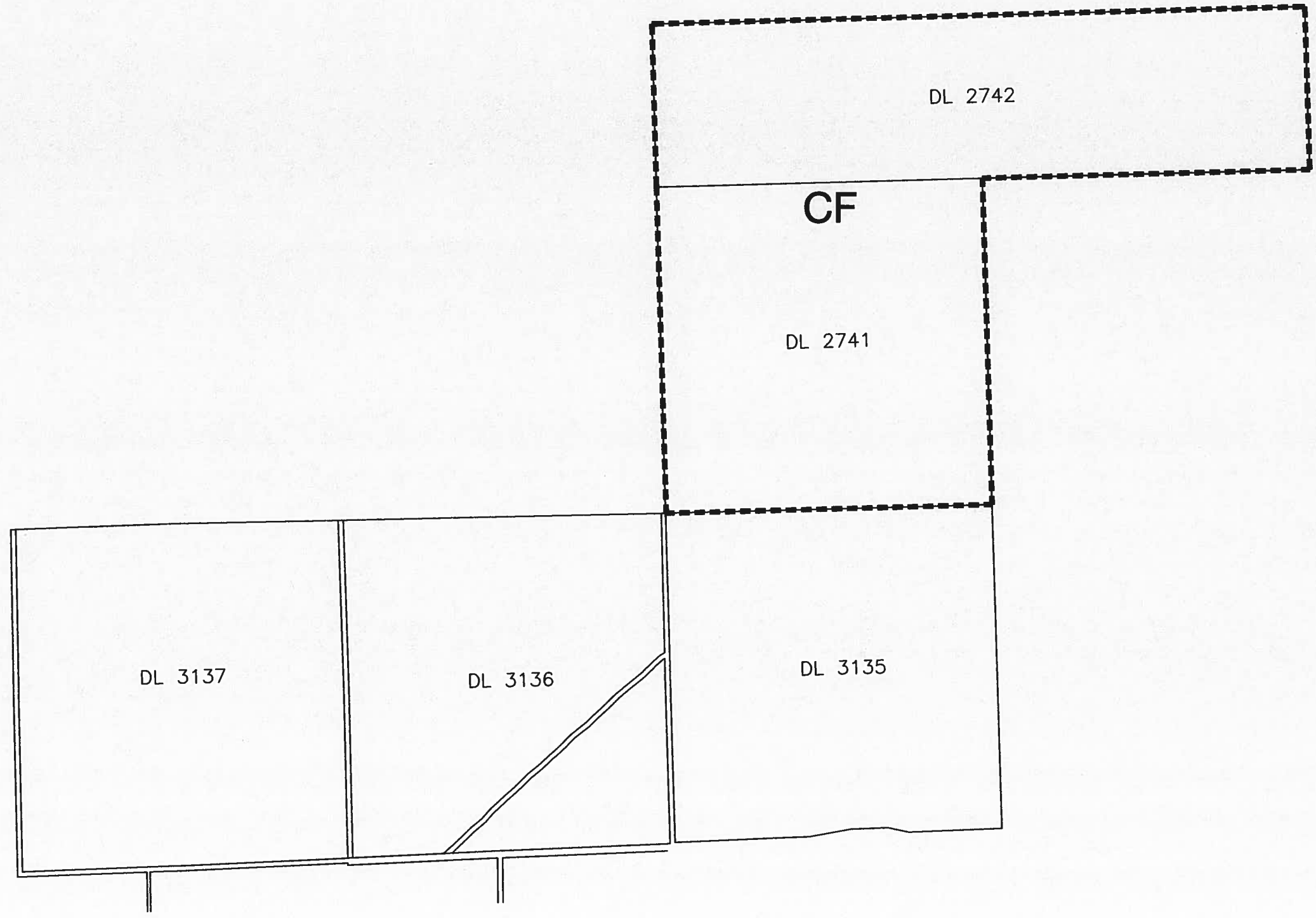
- A-1 AGRICULTURAL 1
- A-2 AGRICULTURAL 2
- CF COMMUNAL FARMS
- R-1 RESIDENTIAL 1
- R-2 RESIDENTIAL 2
- R-3 RESIDENTIAL 3
- R-4 RESIDENTIAL 4
- R-5 RESIDENTIAL 5
- M-1 MANUFACTURED HOME PARK
- HC NEIGHBOURHOOD COMMERCIAL
- CC CENTRAL COMMERCIAL
- RC REGIONAL COMMERCIAL
- I-1 INDUSTRIAL 1
- I-2 INDUSTRIAL 2
- AI AGRICULTURAL INDUSTRIAL ZONE
- OP OIL & GAS PRODUCTION
- AP AIRPORT INDUSTRIAL
- L LAND FARM
- P PUBLIC / INSTITUTIONAL

This is Schedule 'A' of Bylaw No. 1000, 1996, being the Official Zoning Map referred to in Section 33 of the said Bylaw and forming part of the Peace River Regional District Zoning Bylaw No. 1000, 1996.

Original signed by P. Cove
Deputy Secretary

AMENDMENTS

BY-LAW NO.	DATE	SIGNATURE



**OFFICIAL ZONING
MAPS**

MAP 19 - BLUEBERRY COMMUNAL FARM

ORIGINAL SCALE 1:5000
REVISION DATE: NOVEMBER, 1995



ZONES

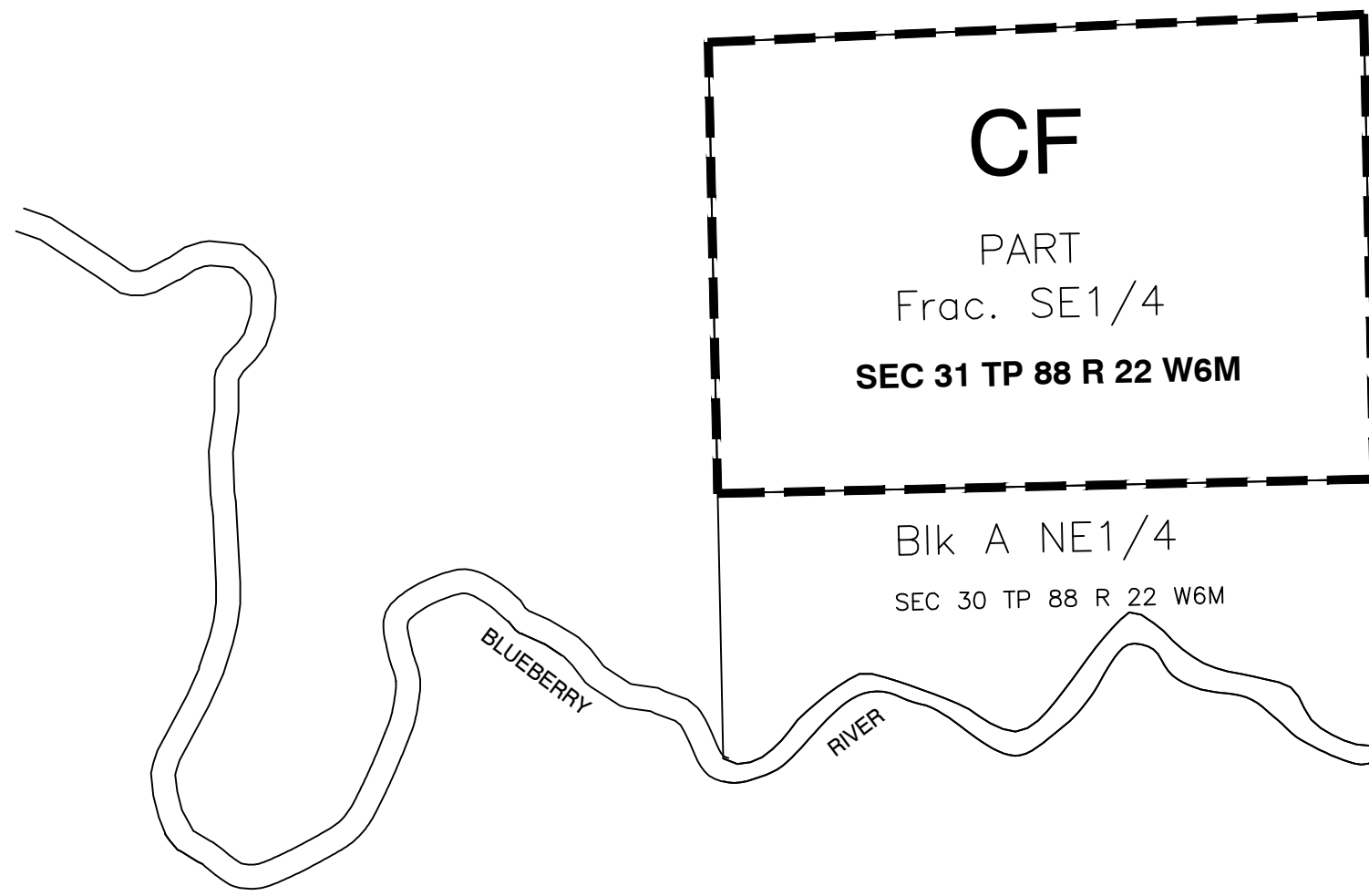
- A-1 AGRICULTURAL 1
- A-2 AGRICULTURAL 2
- C-F COMMUNAL FARMS
- R-1 RESIDENTIAL 1
- R-2 RESIDENTIAL 2
- R-3 RESIDENTIAL 3
- R-4 RESIDENTIAL 4
- MH MANUFACTURED HOME PARK
- NC NEIGHBOURHOOD COMMERCIAL
- HC HIGHWAY COMMERCIAL
- RC REGIONAL COMMERCIAL
- I-1 INDUSTRIAL 1
- I-2 INDUSTRIAL 2
- I-3 AGRICULTURAL INDUSTRIAL ZONE
- I-4 OIL & GAS PRODUCTION
- AP AIRPORT INDUSTRIAL
- LF LAND FARM
- P PUBLIC / INSTITUTIONAL

This is Schedule 'A' of Bylaw No. 1000, 1996, being the Official Zoning Map referred to in Section 33 of the said Bylaw and forming part of the Peace River Regional District Zoning Bylaw No. 1000, 1996.

Original signed by P. Cove
Deputy Secretary

AMENDMENTS

BY-LAW NO.	DATE	SIGNATURE



**OFFICIAL ZONING
MAPS**

MAP 20 - HEADWATERS COMMUNAL FARM

ORIGINAL SCALE 1:15000
REVISION DATE: NOVEMBER, 1996



ZONES

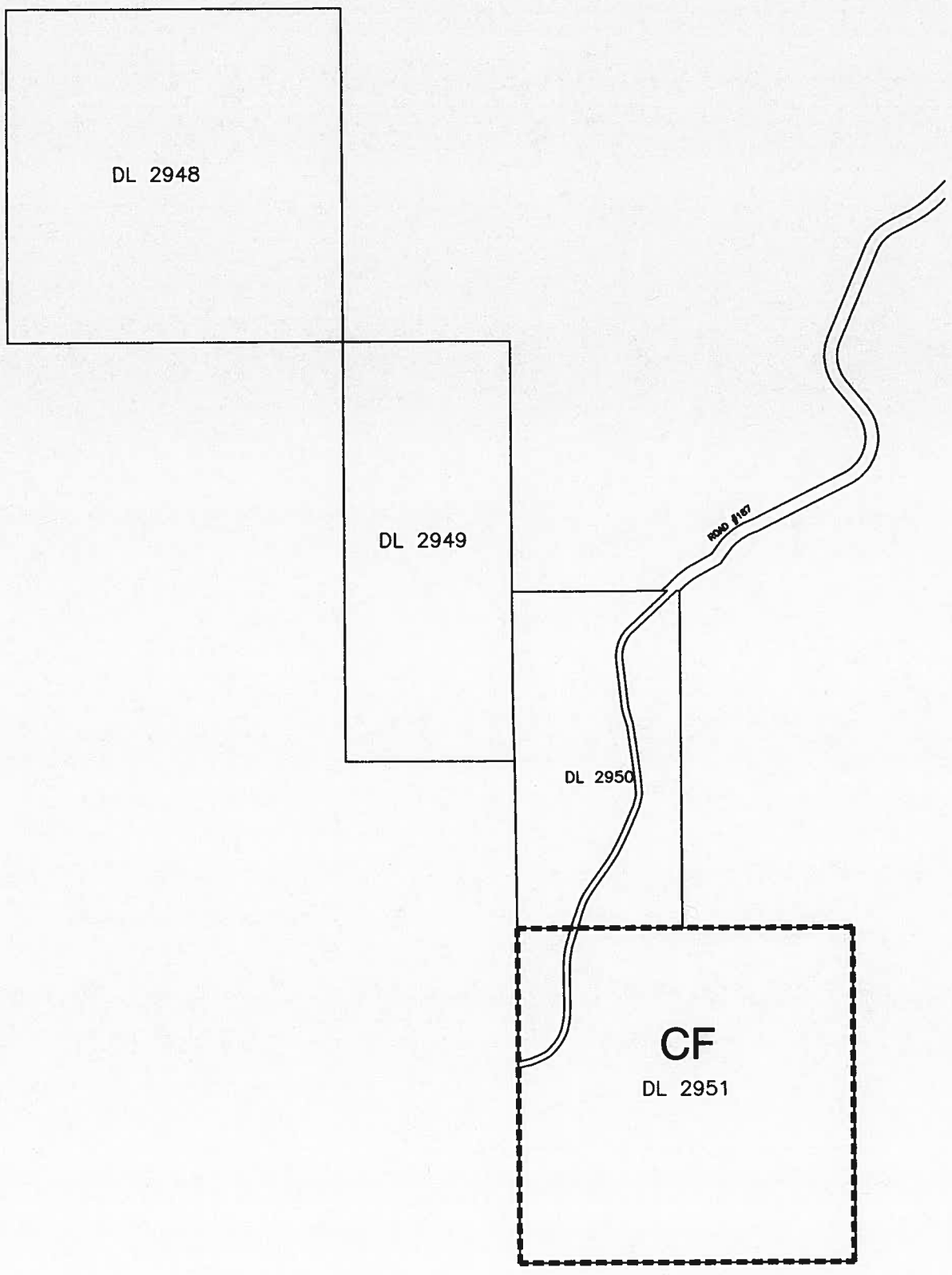
- A-1 AGRICULTURAL 1
- A-2 AGRICULTURAL 2
- CF COMMUNAL FARMS
- R-1 RESIDENTIAL 1
- R-2 RESIDENTIAL 2
- R-3 RESIDENTIAL 3
- M-1 MANUFACTURED HOME PARK
- NC NEIGHBOURHOOD COMMERCIAL
- HC HIGHWAY COMMERCIAL
- RC REGIONAL COMMERCIAL
- I-1 INDUSTRIAL 1
- I-2 INDUSTRIAL 2
- AI AGRICULTURAL INDUSTRIAL ZONE
- OGP OIL & GAS PRODUCTION
- AI-1 AIRPORT INDUSTRIAL
- LP LAND FARM
- P PUBLIC / INSTITUTIONAL

This is Schedule 'A' of Bylaw No. 1000, 1996, being the Official Zoning Map referred to in Section 33 of the said Bylaw and forming part of the Peace River Regional District Zoning Bylaw No. 1000, 1996.

Original signed by P. Cove
Deputy Secretary

AMENDMENTS

BY-LAW NO.	DATE	SIGNATURE



**OFFICIAL ZONING
MAPS**

MAP 21 - WHIPLASH COMMUNAL FARM



ORIGINAL SCALE 1:7500
REVISION DATE: NOVEMBER, 1995

ZONES

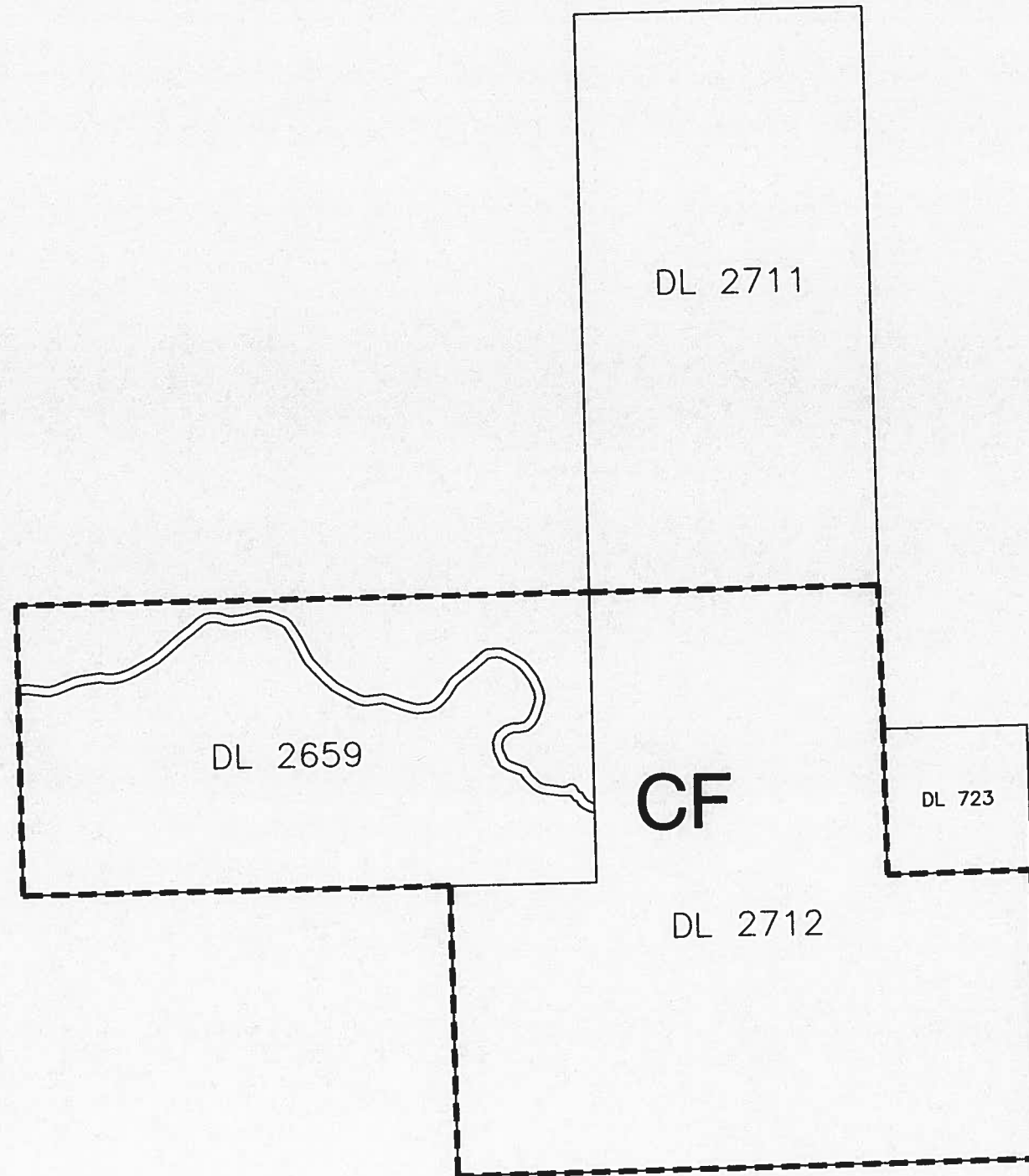
- A-1 AGRICULTURAL 1
- A-2 AGRICULTURAL 2
- C-F COMMUNAL FARMS
- R-1 RESIDENTIAL 1
- R-2 RESIDENTIAL 2
- R-3 RESIDENTIAL 3
- R-4 RESIDENTIAL 4
- MH MANUFACTURED HOME PARK
- NC NEIGHBOURHOOD COMMERCIAL
- HC HIGHWAY COMMERCIAL
- RC REGIONAL COMMERCIAL
- I-1 INDUSTRIAL 1
- I-2 INDUSTRIAL 2
- I-3 AGRICULTURAL INDUSTRIAL ZONE
- I-4 OIL & GAS PRODUCTION
- AP AIRPORT INDUSTRIAL
- LF LAND FARM
- P PUBLIC / INSTITUTIONAL

This is Schedule 'A' of Bylaw No. 1000, 1996, being the Official Zoning Map referred to in Section 33 of the said Bylaw and forming part of the Peace River Regional District Zoning Bylaw No. 1000, 1996.

Original signed by P. Cove
Deputy Secretary

AMENDMENTS

BY-LAW NO.	DATE	SIGNATURE



OFFICIAL ZONING MAP

SCHEDULE A
ZONING BYLAW NO. 1000, 1996
MAP #22 -
Blair Valley Farm Society

ZONES

- A-1 AGRICULTURAL 1
- A-2 AGRICULTURAL 2
- CF COMMUNAL FARMS
- R-1 RESIDENTIAL 1
- R-2 RESIDENTIAL 2
- R-3 RESIDENTIAL 3
- R-4 RESIDENTIAL 4
- MH MANUFACTURED HOME PARK
- NC NEIGHBOURHOOD COMMERCIAL
- HC HIGHWAY COMMERCIAL
- RC REGIONAL COMMERCIAL
- I-1 INDUSTRIAL 1
- I-2 INDUSTRIAL 2
- I-4 OIL & GAS PRODUCTION
- AP AIRPORT INDUSTRIAL
- LF LAND FARM
- P PUBLIC / INSTITUTIONAL

This is Schedule 'A' of Bylaw No. 1000, 1996, being the Official Zoning Map referred to in Section 33 of the said Bylaw and forming part of the Peace River Regional District Zoning Bylaw No. 1000, 1996.

Original signed by P. Cove
Deputy Secretary

AMENDMENTS

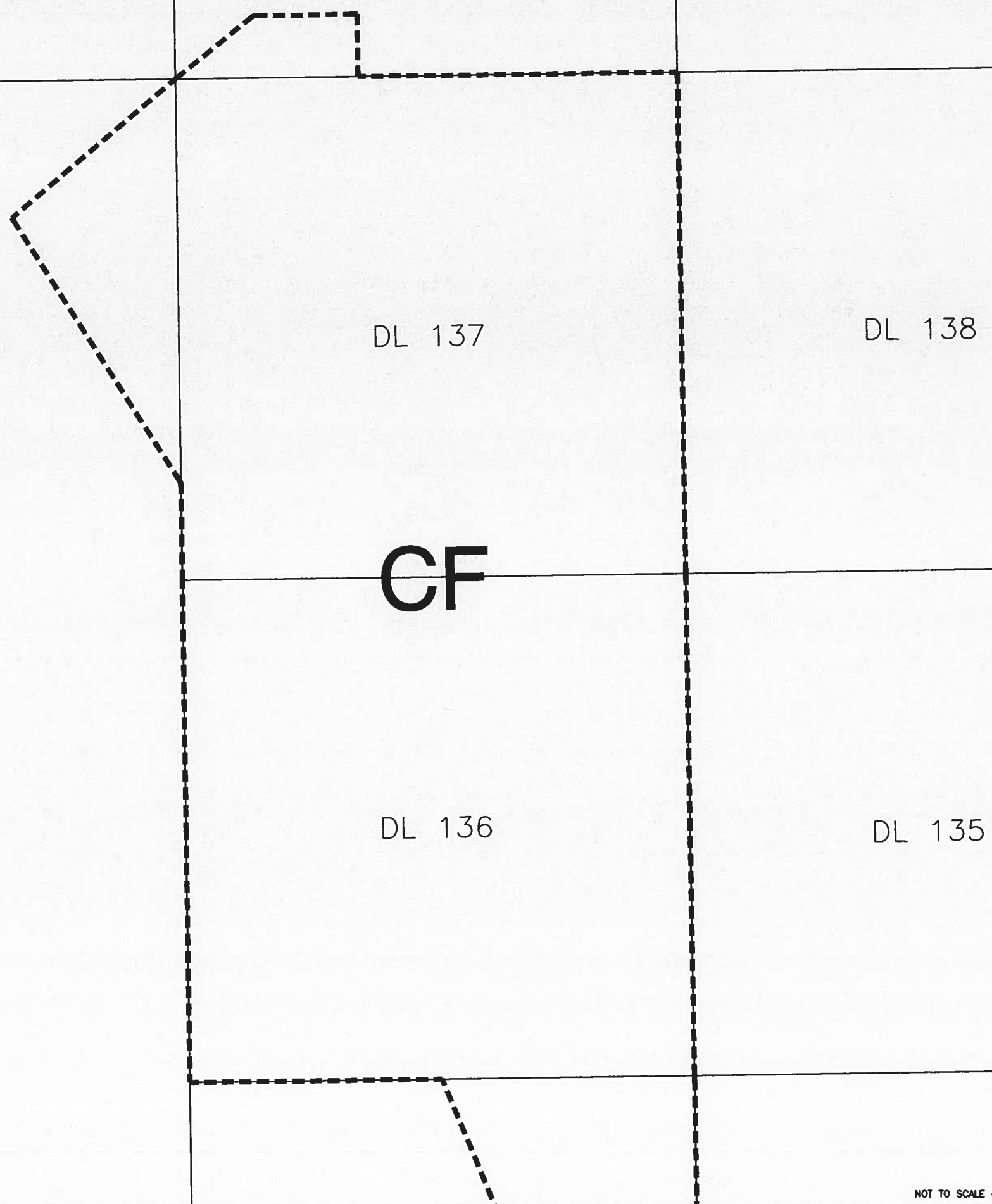
BYLAW NO.	DATE	DESC. OF AMENDMENT	INT.
2023	11/4/13	From A-2 to CF	SO



NOT TO SCALE - FOR CONVENIENCE ONLY

Zoning_Bylaw_1000

REVISED DATE - 11/4/13



SCHEDULE A
Bylaw No. 1000, 1996

**OFFICIAL ZONING
MAPS**

MAP 23 - HUDSON'S HOPE HIGHWAY



ORIGINAL SCALE 1:5000
REVISION DATE: JANUARY, 2017

ZONES

- A-1 AGRICULTURAL 1
- A-2 AGRICULTURAL 2
- C-F COMMUNAL FARMS
- R-1 RESIDENTIAL 1
- RR-2 RESIDENTIAL 2
- RR-3 RESIDENTIAL 3
- RR-4 RESIDENTIAL 4
- MH MANUFACTURED HOME PARK
- NC NEIGHBOURHOOD COMMERCIAL
- HC HIGHWAY COMMERCIAL
- RC REGIONAL COMMERCIAL
- I-1 INDUSTRIAL 1
- I-2 INDUSTRIAL 2
- I-3 AGRICULTURAL INDUSTRIAL ZONE
- I-4 OIL & GAS PRODUCTION
- AP AIRPORT INDUSTRIAL
- LF LAND FARM
- P PUBLIC / INSTITUTIONAL

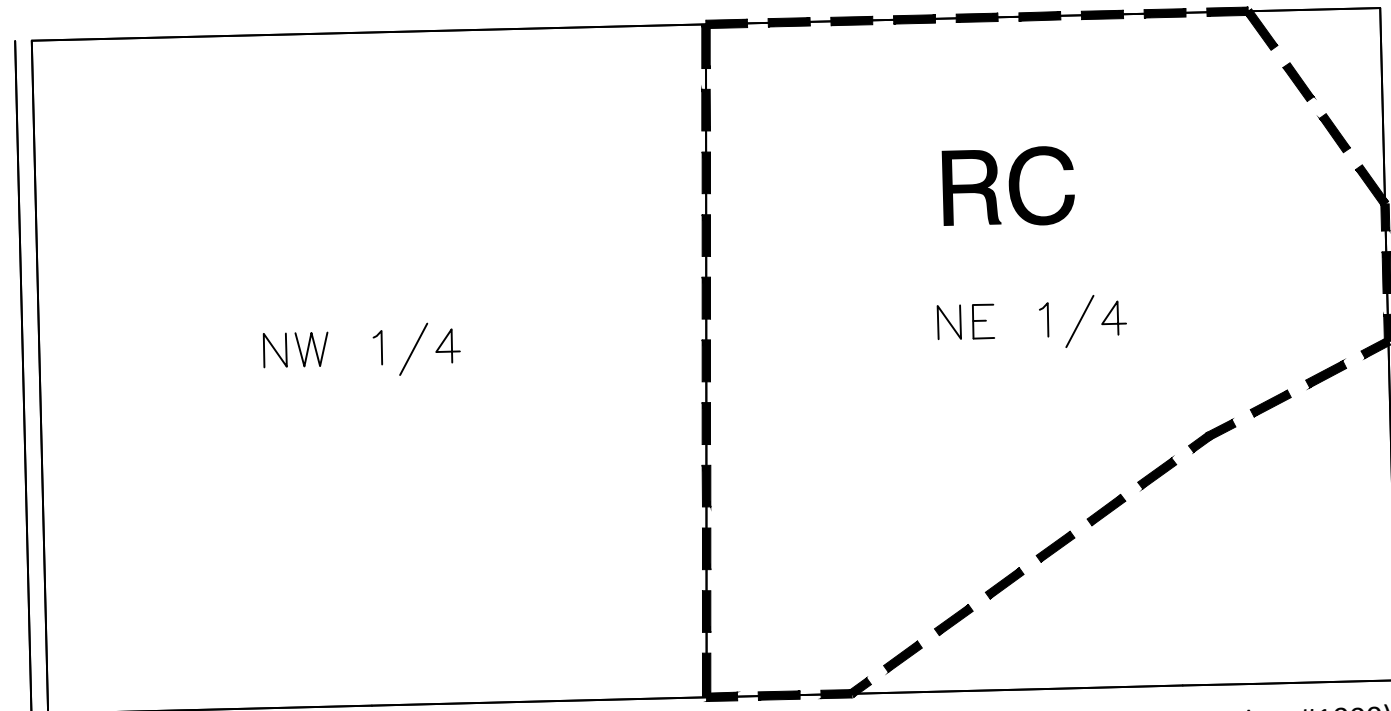
This is Schedule 'A' of Bylaw No. 1000, 1996, being the Official Zoning Map referred to in Section 33 of the said Bylaw and forming part of the Peace River Regional District Zoning Bylaw No. 1000, 1996.

Original signed by P. Cove
Deputy Secretary

AMENDMENTS

BY-LAW NO.	DATE	SIGNATURE

TP 84 R 21 W6M



9

(Bylaw #1000)

**OFFICIAL ZONING
MAPS**

MAP 24 - BLUEBERRY RIVER AREA



ORIGINAL SCALE 1:5000
REVISION DATE: NOVEMBER, 1995

ZONES

- A-1 AGRICULTURAL 1
- A-2 AGRICULTURAL 2
- C-1 COMMUNAL FARMS
- R-1 RESIDENTIAL 1
- R-2 RESIDENTIAL 2
- R-3 RESIDENTIAL 3
- R-4 RESIDENTIAL 4
- MH MANUFACTURED HOME PARK
- NC NEIGHBOURHOOD COMMERCIAL
- HC HIGHWAY COMMERCIAL
- RC REGIONAL COMMERCIAL
- I-1 INDUSTRIAL 1
- I-2 INDUSTRIAL 2
- I-3 AGRICULTURAL INDUSTRIAL ZONE
- I-4 OIL & GAS PRODUCTION
- AP AIRPORT INDUSTRIAL
- LF LAND FARM
- P PUBLIC / INSTITUTIONAL

This is Schedule 'A' of Bylaw No. 1000, 1996, being the Official Zoning Map referred to in Section 33 of the said Bylaw and forming part of the Peace River Regional District Zoning Bylaw No. 1000, 1996.

Original signed by P. Cove
Deputy Secretary

AMENDMENTS

BY-LAW NO.	DATE	SIGNATURE

TP 113 W6M



OFFICIAL ZONING
MAPS

MAP 25 - FLATROCK AREA

ORIGINAL SCALE 1:5000
REVISION DATE: NOVEMBER, 1995



ZONES

- A-1 AGRICULTURAL 1
- A-2 AGRICULTURAL 2
- CA COMMUNAL FARMS
- R-1 RESIDENTIAL 1
- R-2 RESIDENTIAL 2
- R-3 RESIDENTIAL 3
- MHP MANUFACTURED HOME PARK
- NHC NEIGHBOURHOOD COMMERCIAL
- HWC HIGHWAY COMMERCIAL
- RC REGIONAL COMMERCIAL
- I-1 INDUSTRIAL 1
- I-2 INDUSTRIAL 2
- AI AGRICULTURAL INDUSTRIAL ZONE
- O&G OIL & GAS PRODUCTION
- AI-1 AIRPORT INDUSTRIAL
- LF LAND FARM
- P PUBLIC / INSTITUTIONAL

This is Schedule 'A' of Bylaw No. 1000, 1996, being the Official Zoning Map referred to in Section 33 of the said Bylaw and forming part of the Peace River Regional District Zoning Bylaw No. 1000, 1996.

Original signed by P. Cove
Deputy Secretary

AMENDMENTS

BY-LAW NO.	DATE	SIGNATURE

TP 84 R 15 W6M

