



## 5. INFRASTRUCTURE AND SERVICES

**GOAL:** *Provide efficient, sustainable and cost-effective services that contribute to regional wellbeing and health.*

Well-planned infrastructure services are important to the overall health, safety and livability of communities. More dispersed settlement patterns require servicing infrastructure extensions, which are expensive to build, operate and maintain and can produce greater environmental impacts than development in existing serviced areas.

The delivery of services such as water, wastewater and sewer, and solid waste are core functions of the PRRD, as with other regional districts across the province. The PRRD provides a range of services across the region for electoral area residents and member municipalities. In general, areas closest to municipalities have access to more services, including some water and sewer services provided through neighbouring municipalities. Expanding and extending this infrastructure is often an essential component of planning for growth, as it is necessary to consider the capacity, costs and needs associated with those services.

### 1. Reduce solid and liquid waste.

- a) Continue to implement and monitor the PRRD Regional Solid Waste Management Plan.
- b) Continue to support and promote public waste reduction and education programs as outlined in the PRRD Regional Solid Waste Management Plan.
- c) Identify ways to improve the recycling and composting programs for municipalities and electoral areas.
- d) Explore the use of treated effluent water for industrial use where feasible and appropriate.
- e) Consider establishing a development trigger (e.g., number of lots) for the creation of

new community sewer systems in any new designated rural settlement centre.

- f) Collaborate with PRRD member municipalities on exploring the development of more specific plans for improving rural water and sewer systems, particularly in areas near urban growth centres, which would enhance inter-municipal service efficiency.
- g) Collaborate with industry to promote wastewater reuse programs to reduce water use and improve water conservation.

### 2. Minimize environmental impacts of PRRD infrastructure and services.

- a) Support projects to improve water resource management, including water conservation and reuse, groundwater management and stormwater management.
- b) Update the Subdivision and Development Servicing Bylaw to include regulations on stormwater management for new development.
- c) Minimize regional infrastructure development impacts by avoiding hazard areas and environmentally sensitive areas.
- d) Work with Northern Health to address water quality concerns associated with contamination and impacts from other uses, such as the oil and gas industry, Site C Dam, forestry and agriculture.
- e) Consider collaborating with provincial partners (Ministry of Environment and Parks) to undertake a regional natural asset mapping and inventory to support sustainable planning, conservation, and climate resilience.



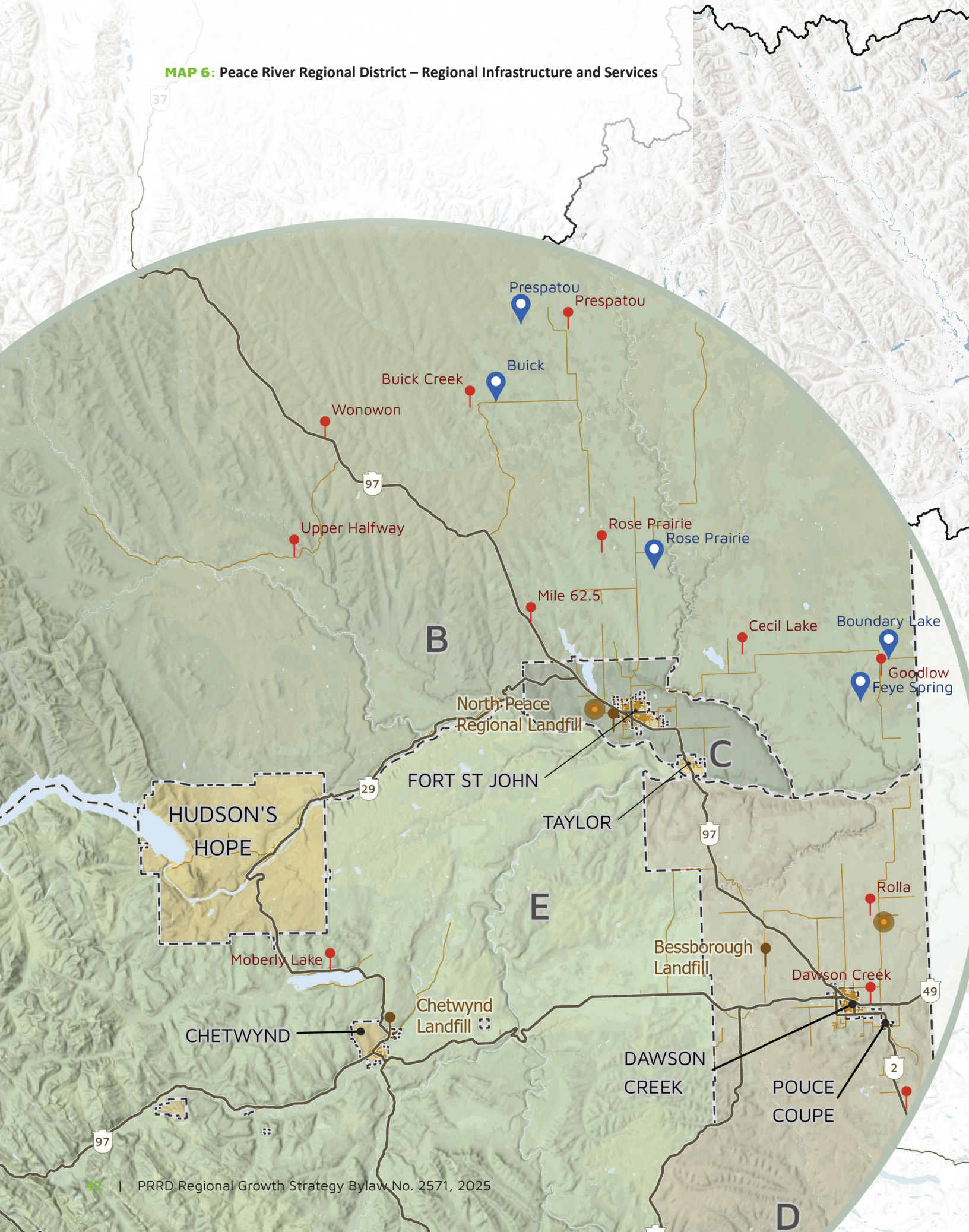
### 3. Improve PRRD asset management.

- a) Continue to implement the Asset Management Policy and Asset Management Financial Strategy.
- b) Explore undertaking a Regional Natural Hazard and Climate Risk Assessment for all PRRD-owned assets to identify potential climate change hazards and risks and outline mitigation strategies to reduce them.
- c) Direct and encourage new development to serviced areas to provide more cost-effective infrastructure, facilities and services.

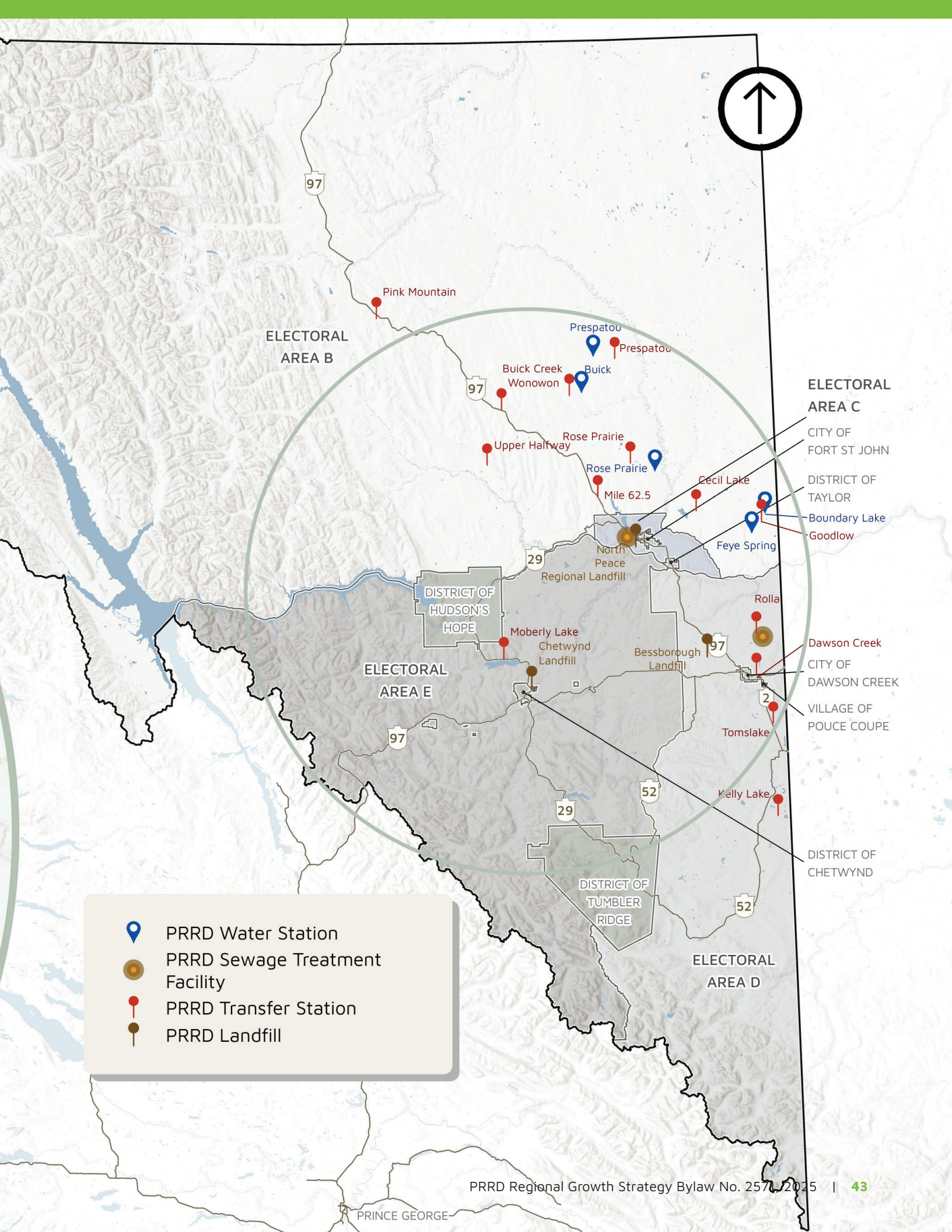




**MAP 6: Peace River Regional District – Regional Infrastructure and Services**







ELECTORAL  
AREA B

ELECTORAL  
AREA C

CITY OF  
FORT ST JOHN

DISTRICT OF  
TAYLOR

Boundary Lake

Goodlow

Feye Spring

Cecil Lake

Mile 62.5

Rose Prairie

Upper Halfway

Wonowon

Buick Creek

Prespatou

Pink Mountain

Rolla

Dawson Creek

CITY OF  
DAWSON CREEK

VILLAGE OF  
POUCE COUPE

Tomslake

Kelly Lake

DISTRICT OF  
CHETWYND

DISTRICT OF  
TUMBLER  
RIDGE

ELECTORAL  
AREA D

ELECTORAL  
AREA E

DISTRICT OF  
HUDSON'S  
HOPE

Chetwynd  
Landfill

Moberly Lake

North Peace  
Regional Landfill

Bessborough  
Landfill

Boundary Lake

Goodlow

Feye Spring

Cecil Lake



PRRD Water Station



PRRD Sewage Treatment  
Facility



PRRD Transfer Station



PRRD Landfill