

### 3. AGRICULTURE AND FOOD



#### **GOAL: Support agriculture and protect farmlands in the PRRD.**

Agriculture and farming have played a central role in the regional economy, its recent history and the larger identity of the region. Grain, forage crops, canola and cattle have long been the foundation of this agricultural region, and the sector has remained a reliable mainstay of the region's economy through resource boom and bust cycles and other economic challenges. As shown in Map 5, the ALR makes up 11% of all land in the region. With over 1.3 million hectares of ALR land, the PRRD is home to 27% of the province's ALR land.

#### **1. Support local agriculture and related businesses.**

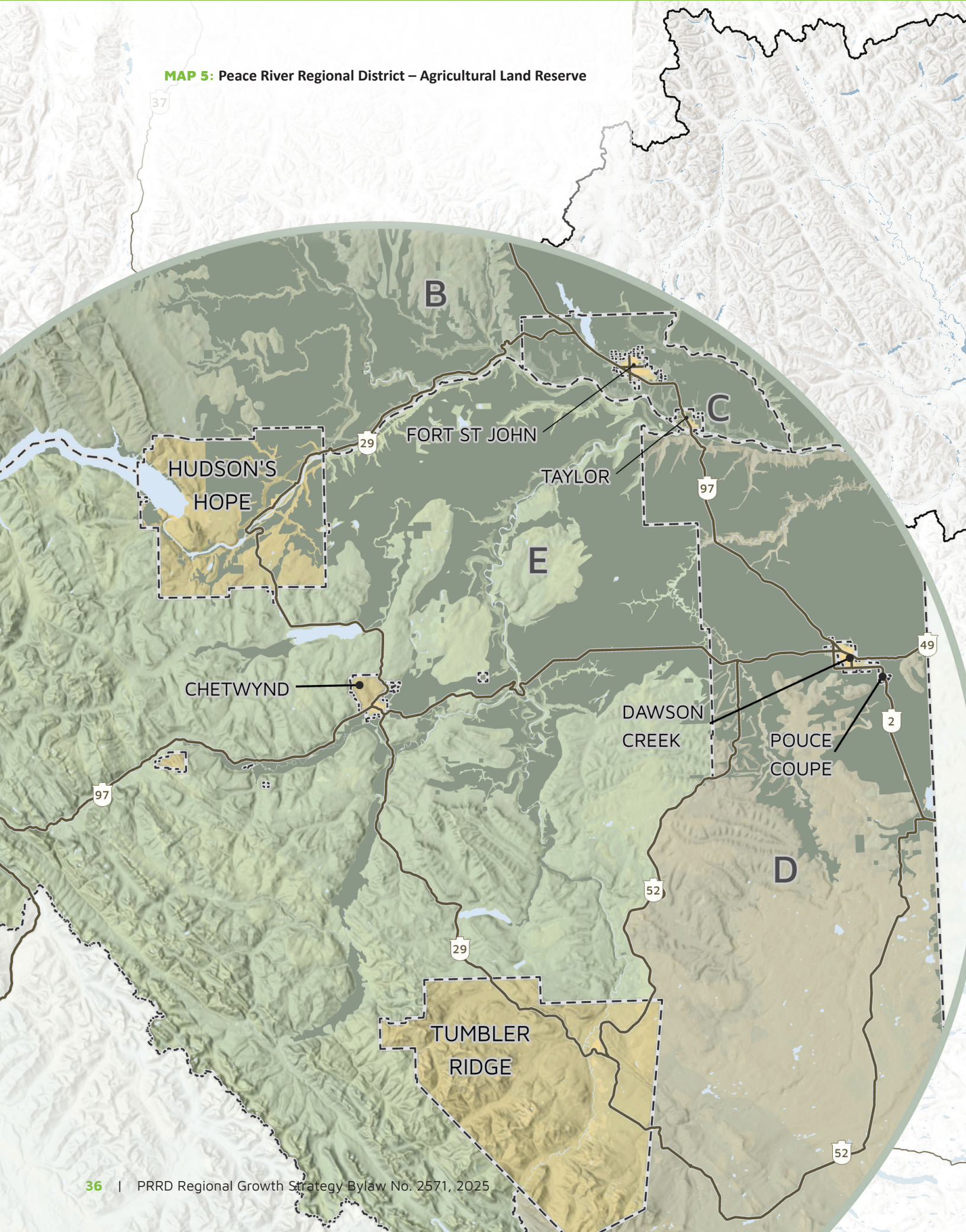
- a) Support and encourage value-added agricultural processing and production where practical and feasible.
- b) Support the preservation of the Agricultural Land Reserve for long-term agricultural uses through the update and implementation of official community plans in the region.
- c) Support maintenance and improvements to the regional transportation network, including rail, to support the transport of agricultural products.
- d) Undertake edge planning to mitigate the impacts of non-farm uses on farming activities when considering development adjacent to the ALR and designated agricultural properties.
- e) Work collaboratively with member municipalities, agricultural producers, residents and First Nations to develop a Regional Agriculture Strategy.
- f) Work with PRRD member municipalities to advocate for and protect agricultural land within the rural areas while recognizing urban development needs within municipalities.
- g) Work with PRRD member municipalities to advocate for land use exemptions to the ALC Act and Regulations that allow for greater flexibility and support of the unique needs of farmers in this region.

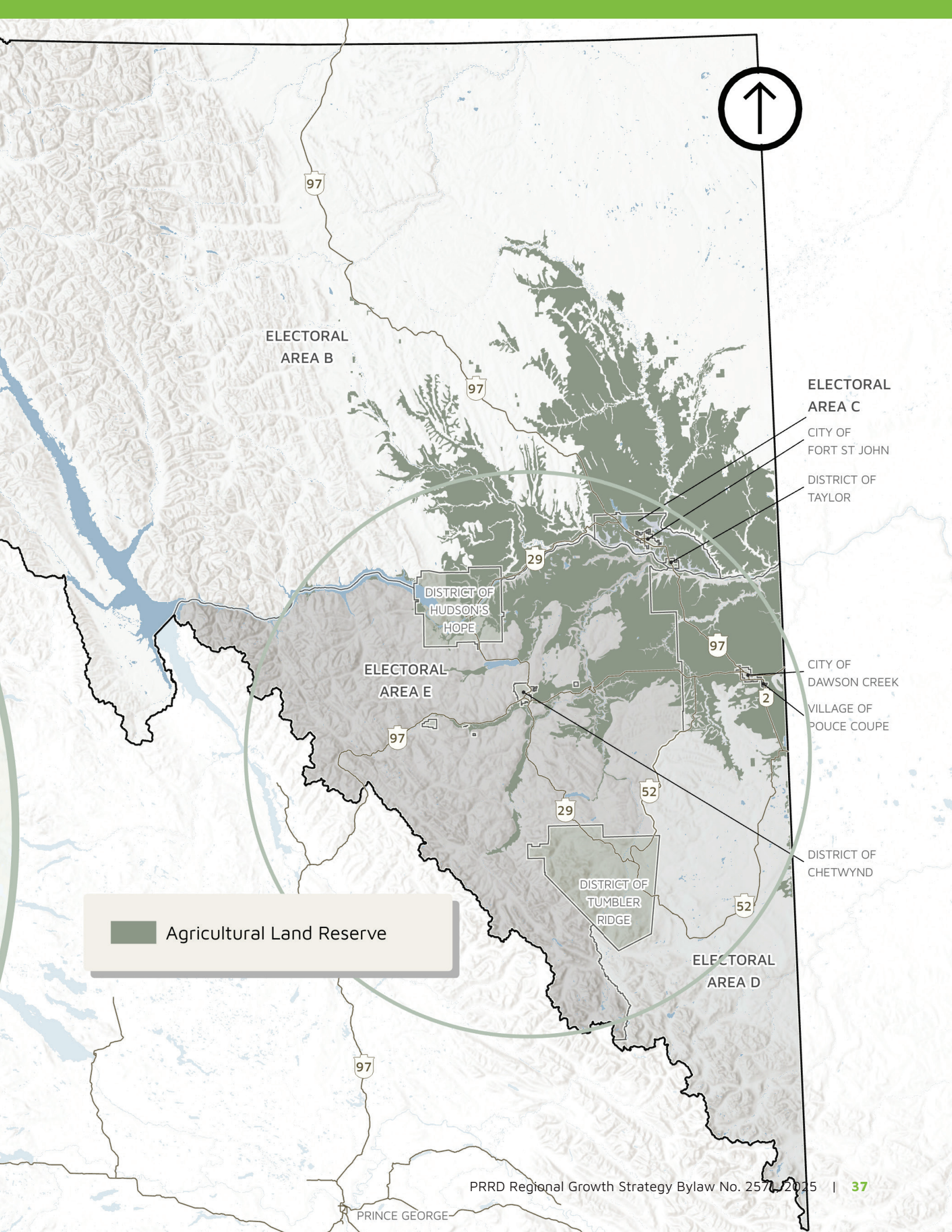
- h) Work with PRRD member municipalities to advocate for and build provincial awareness of the unique situation that exists in northern B.C. as compared to other agricultural areas in the province (e.g., larger parcel sizes, longer winters, lack of rail access) that may necessitate more and larger buildings and facilities, including additional farm residences.
- i) Work with the agricultural partners and collaborators in the PRRD to attract and support younger farming families in the region.
- j) Support agricultural partners and collaborators working in the PRRD (B.C. Agriculture Council, Northern Development Initiative Trust, B.C. Peace Agricultural Fund) to ensure a sustainable food supply for the region.

#### **2. Collaborate with regional partners on addressing climate impacts on agriculture in the PRRD.**

- a) Work with PRRD member municipalities, First Nations, the Province (Ministry of Agriculture and Food, Ministry of Water, Land and Resource Stewardship) and the regional agricultural sector to help plan for and ensure sustainable access to water for agriculture in increasingly warmer and drier climate.
- b) Work with PRRD member municipalities, First Nations, the Province (Ministry of Agriculture and Food, Ministry of Water, Land and Resource Stewardship) and the regional agricultural sector to explore an integrated water resource management approach to watershed planning at the PRRD level to help better coordinate more holistic and collaborative regional water management strategies.
- c) Identify opportunities to improve climate resilience for agriculture through land use policies.

**MAP 5: Peace River Regional District – Agricultural Land Reserve**





ELECTORAL AREA B

ELECTORAL AREA C

CITY OF FORT ST JOHN

DISTRICT OF TAYLOR

DISTRICT OF HUDSON'S HOPE

ELECTORAL AREA E

CITY OF DAWSON CREEK

VILLAGE OF POUCE COUPE

DISTRICT OF TUMBLER RIDGE

DISTRICT OF CHETWYND

ELECTORAL AREA D

Agricultural Land Reserve