

7. TRANSPORTATION AND MOBILITY



GOAL: *Collaborate with partners to provide an accessible, safe and efficient transportation system for people and goods.*

PRRD residents depend on a municipal and provincial transportation network for work, recreation and day-to-day travel, and the regional economy depends on the network for safe and efficient goods movement. While most residents rely on private vehicles to move around the region, the City of Fort St. John and BC Transit operate a local bus system.

Except for roads within municipal boundaries, the road network in the region is under the jurisdiction of the province and the Ministry of Transportation and Transit.

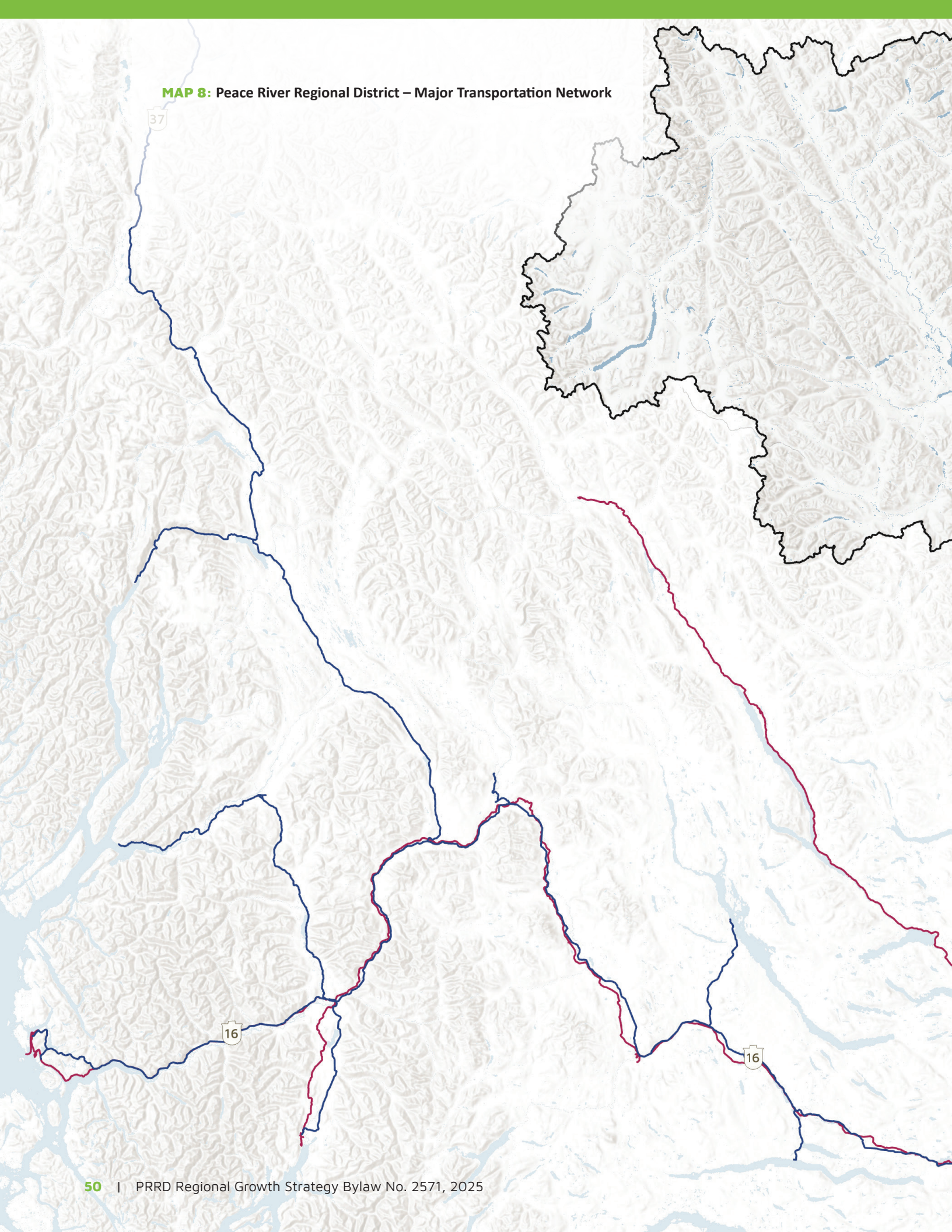
1. Improve transportation networks, infrastructure and capacity in the PRRD.

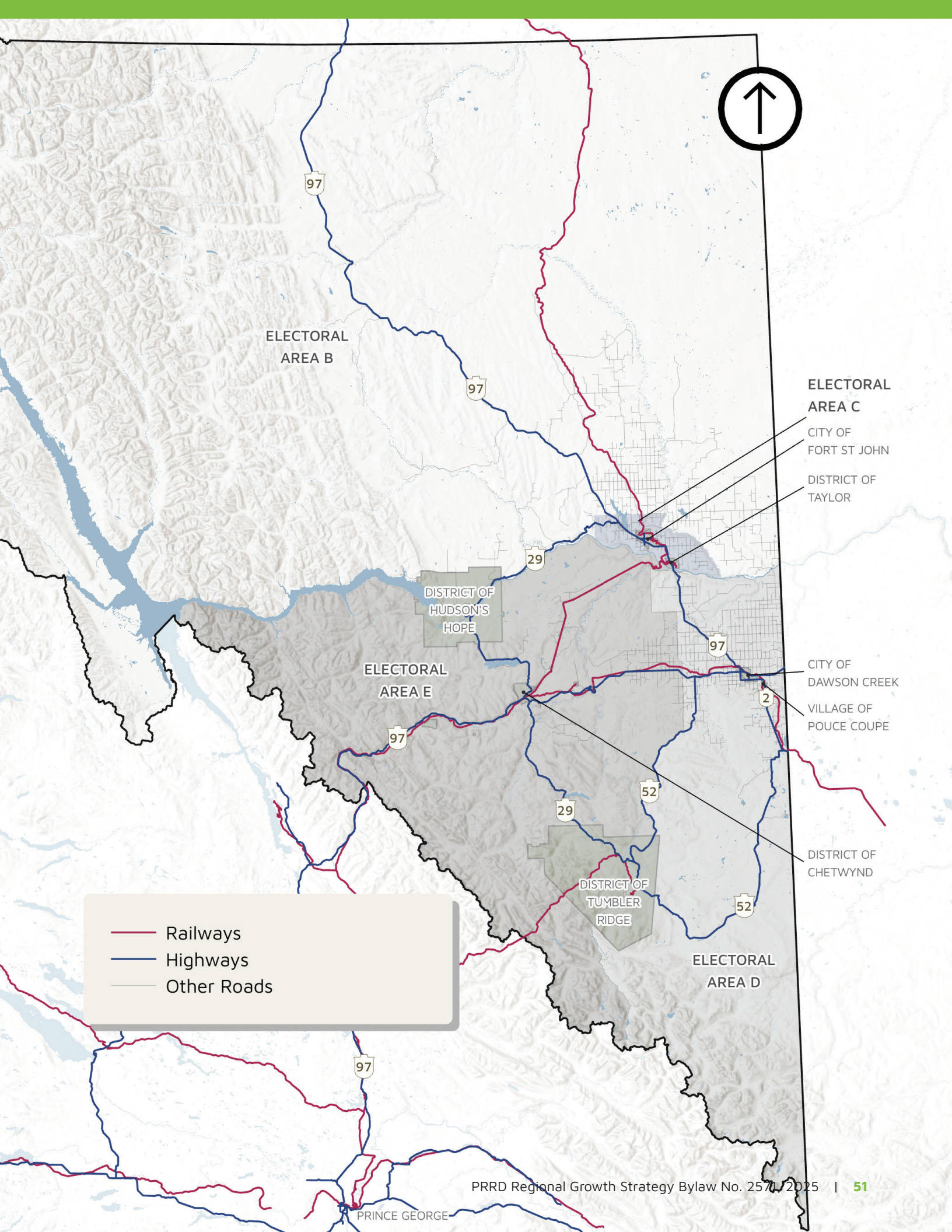
- a) Work with the Ministry of Transportation and Transit and PRRD member municipalities to ensure transportation infrastructure supports the economic functions of the PRRD.
- b) Explore the creation of a Regional Transportation Plan with member municipalities, residents, businesses, First Nations and the Ministry of Transportation and Transit.
- c) Work with the Ministry of Transportation and Transit to identify and prioritize road network improvements.
- d) Work with the Ministry of Transportation and Transit to improve the maintenance and safety of important industrial and agricultural transportation connections in the region.
- e) Advocate for and support improved rail service to support the resource and agricultural sectors.

2. Expand safe, accessible, efficient transit, cycling and walking where practical.

- a) Work with BC Transit, Ministry of Transportation and Transit and PRRD member municipalities to explore the expansion of public transportation in the area, including a potential regional connection between Fort St. John and Dawson Creek.
- b) Support the creation of compact, walkable neighbourhoods in urban communities with pedestrian and cycling connections and linkages.
- c) Support the creation of traffic-separated walking and cycling paths in rural settlement areas, particularly around schools and other community facilities.

MAP 8: Peace River Regional District – Major Transportation Network





ELECTORAL
AREA B

ELECTORAL
AREA C

CITY OF
FORT ST JOHN

DISTRICT OF
TAYLOR

DISTRICT OF
HUDSON'S
HOPE

ELECTORAL
AREA E

CITY OF
DAWSON CREEK

VILLAGE OF
POUCE COUPE

DISTRICT OF
TUMBLER
RIDGE

DISTRICT OF
CHETWYND

ELECTORAL
AREA D

- Railways
- Highways
- Other Roads