



WEST PEACE FRINGE AREA - SCHEDULES B, C, D, E & F

OFFICIAL COMMUNITY PLAN BYLAW No. 2312, 2018

SCHEDULE B

INDEX MAP

Bylaw Date Approved Amendment

No Amendments

MAP 1

Bylaw Date Approved Amendment

No Amendments

MAP 2

Bylaw Date Approved Amendment

No Amendments

MAP 3

Bylaw Date Approved Amendment

2325 2020/05/28 From S to I

MAP 4

Bylaw Date Approved Amendment

2540 2024/03/21 From AgR and S to I
 2540 2024/03/21 From AgR to S
 2540 2024/03/21 From S to AgR
 2577 2025/09/18 From S to I

MAP 5

Bylaw Date Approved Amendment

No Amendments

SCHEDULE C

AGRICULTURAL LAND RESERVE

Bylaw Date Approved Amendment

No Amendments

SCHEDULE D

PARKS, PROTECTED AREAS & WATERSHEDS

Bylaw Date Approved Amendment

No Amendments

SCHEDULE E

PUBLIC FACILITIES

Bylaw Date Approved Amendment

No Amendments

SCHEDULE F

PRESERVATION AREA

Bylaw Date Approved Amendment

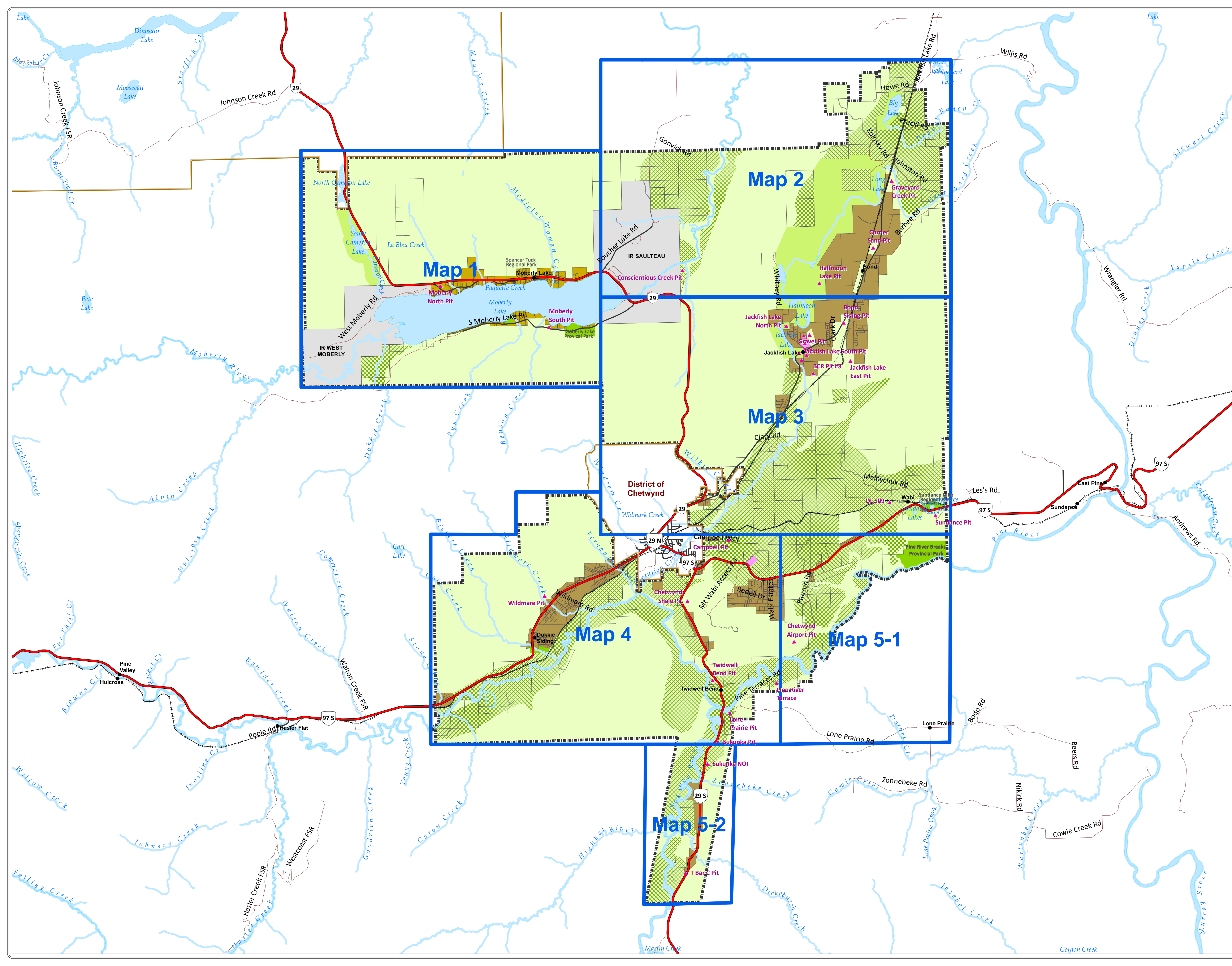
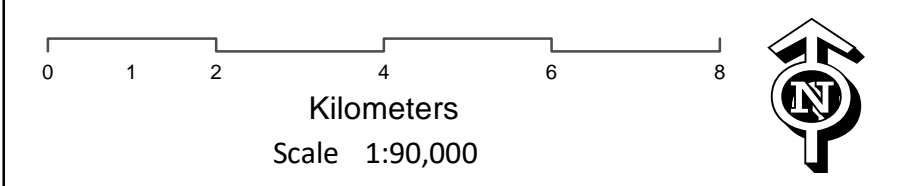
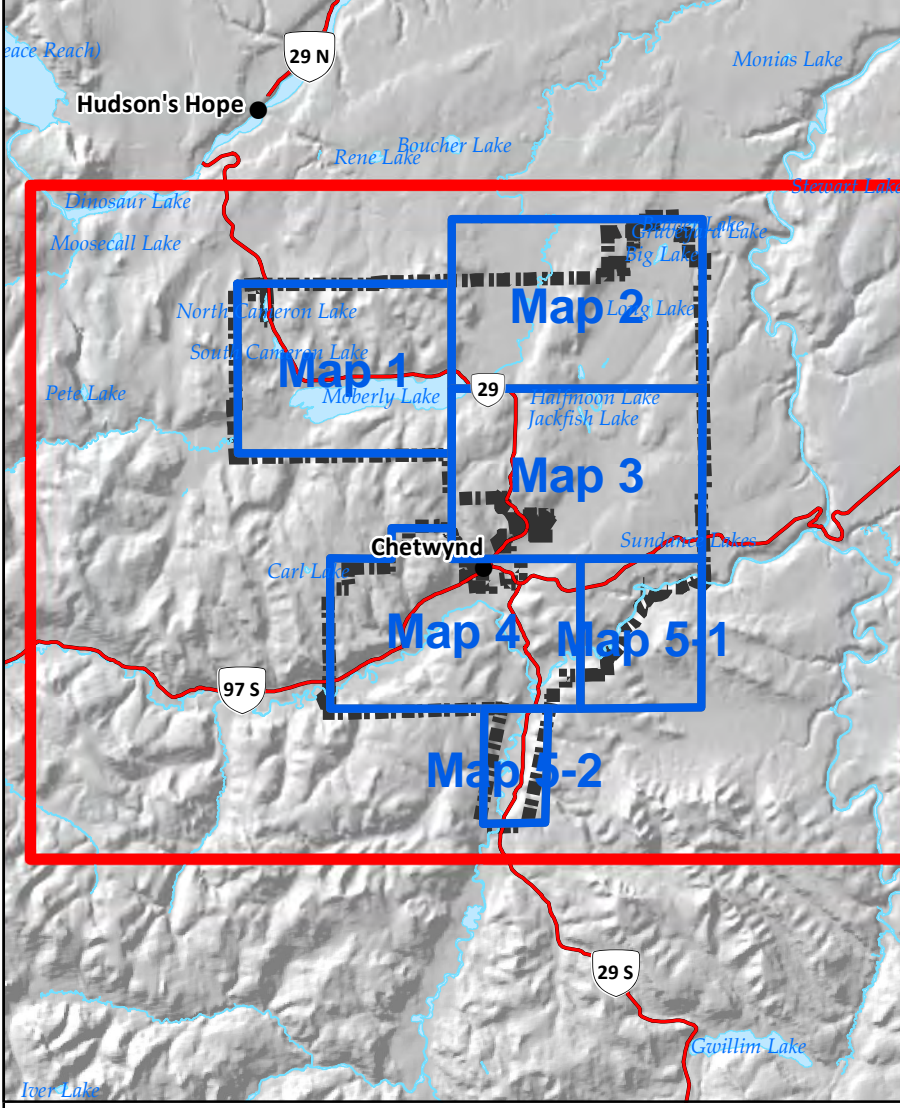
No Amendments

West Peace Fringe Area Official Community Plan Bylaw No. 2312, 2018 Schedule B Index Map



- Legend**
- OCP Boundary
 - Municipal Boundary
 - Parcels
 - First Nations
 - Rail Line
 - Highways
 - Hard Surface
 - Gravel
 - Lakes
 - River/Stream
 - Swamp / Marsh
 - Rural Community
 - Gravel Deposit
- Land Use Designation**
- Agriculture Resource (AgR)
 - Agriculture (Ag)
 - Industrial (I)
 - Moberly Lake Settlement (MLS)
 - Open Space (OS)
 - Parks (P)
 - Settlement (S)

For the most up to date information please visit the Peace River Regional Districts web map at: <https://prrd.bc.ca/services/mapping-gis/web-map/>



**West Peace Fringe Area
Official Community Plan
Bylaw No. 2312, 2018
Schedule B
Map 2**



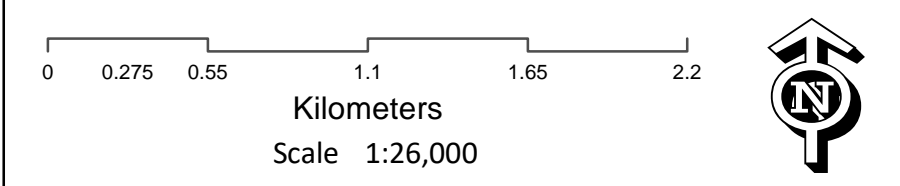
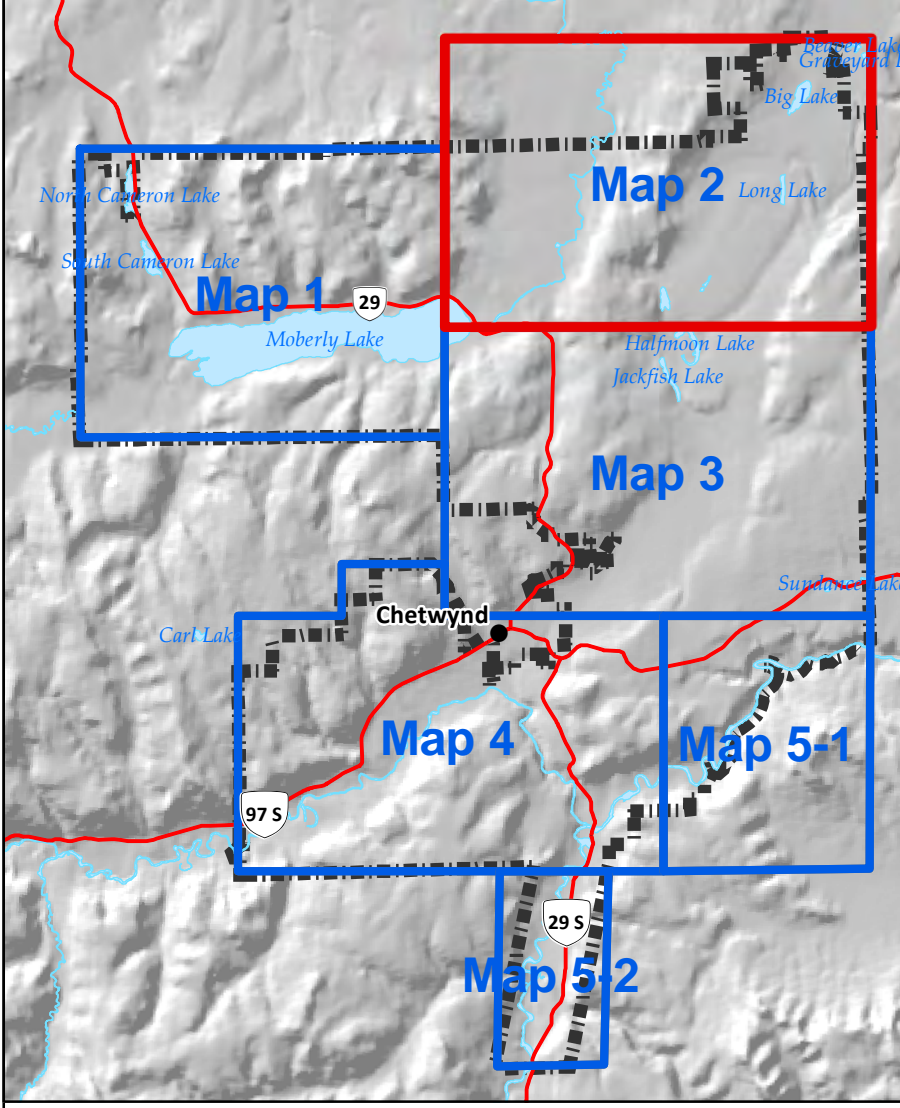
Legend

- OCP Boundary
- Municipal Boundary
- Parcels
- First Nations
- Rail Line
- Highways
- Hard Surface
- Gravel
- Lakes
- River/Stream
- Swamp / Marsh
- Rural Community
- Gravel Deposit

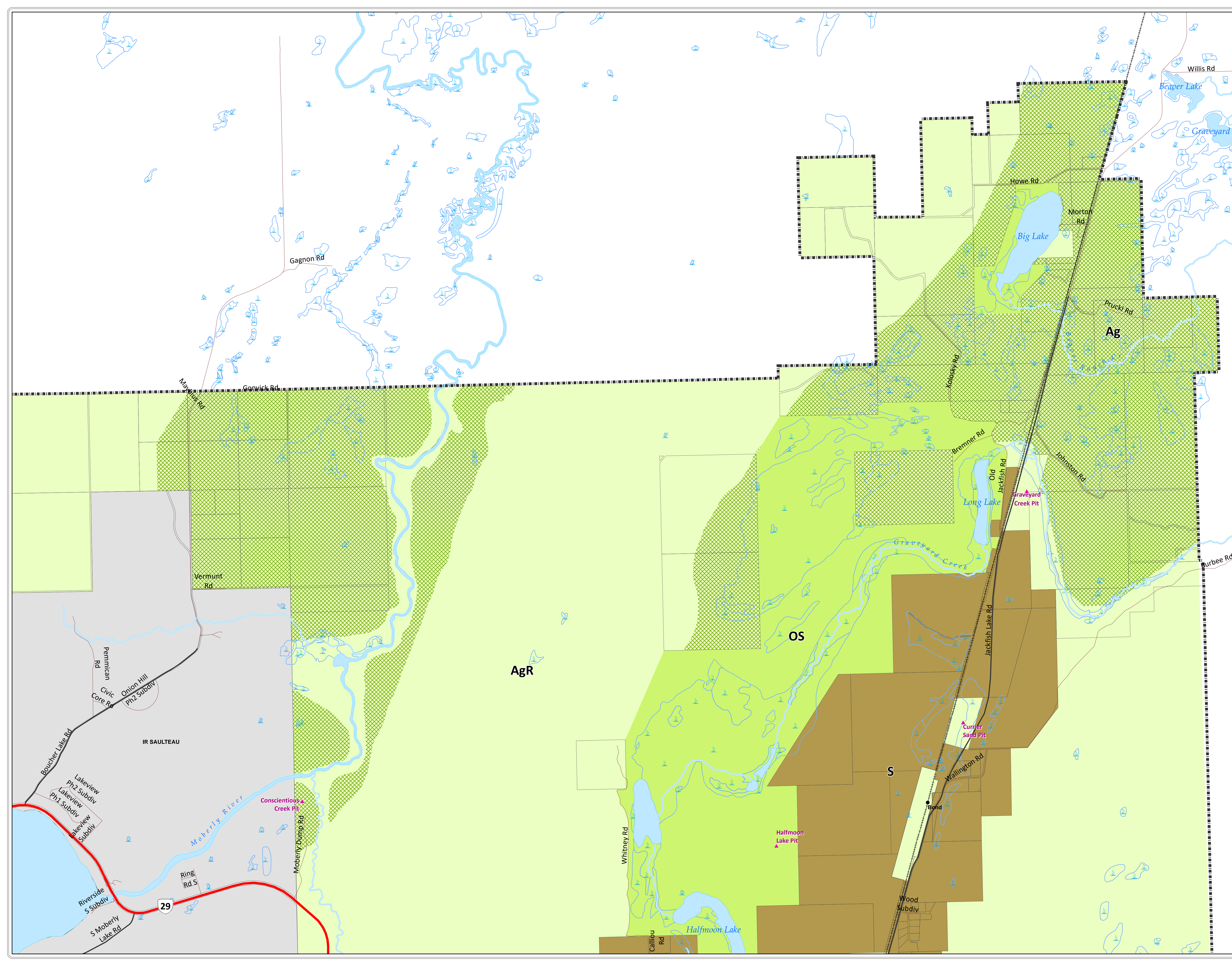
Land Use Designation

- Agriculture Resource (AgR)
- Agriculture (Ag)
- Industrial (I)
- Moberly Lake Settlement (MLS)
- Open Space (OS)
- Parks (P)
- Settlement (S)

For the most up to date information please visit the Peace River Regional Districts web map at: <https://prrd.bc.ca/services/mapping-gis/web-map/>



Revised: Monday, December 21, 2020
Data Source: Peace River Regional District
Projection: NAD 83 UTM Zone 10



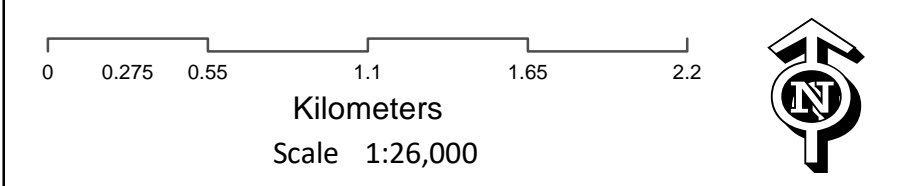
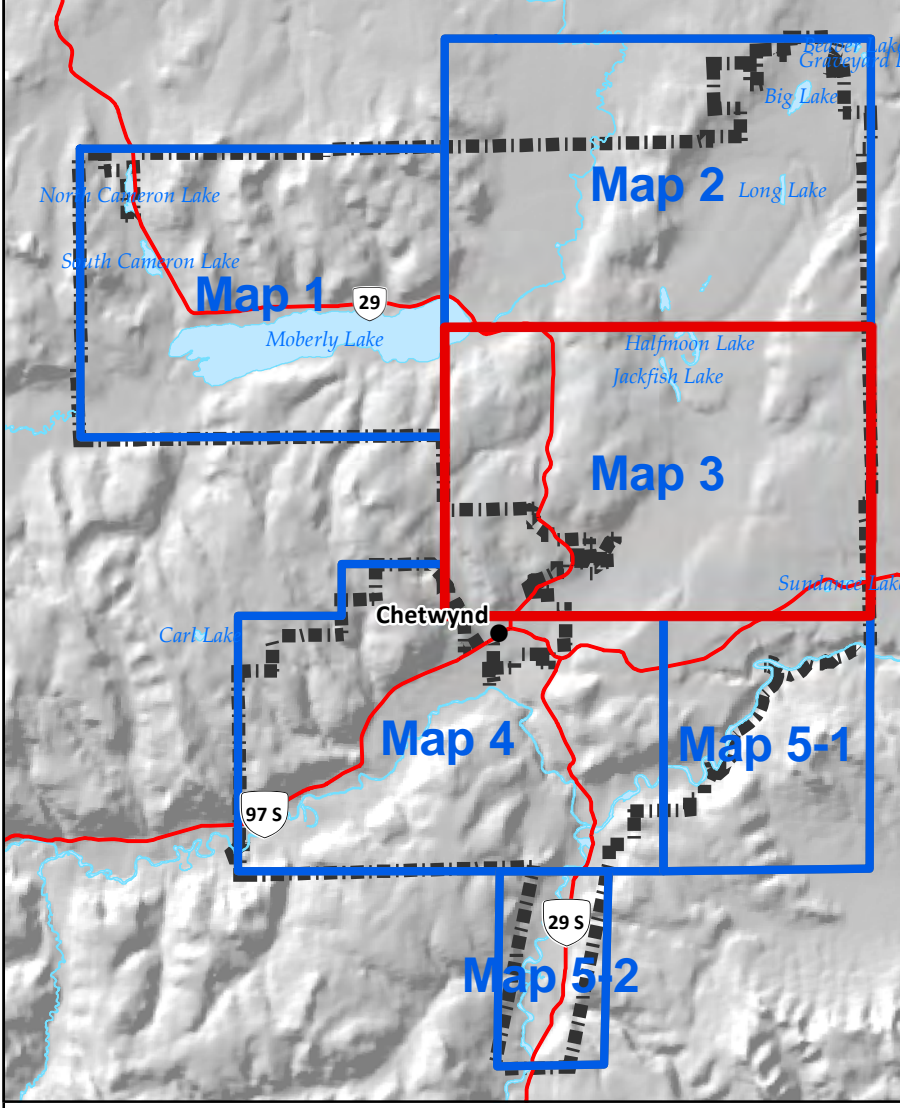
**West Peace Fringe Area
Official Community Plan
Bylaw No. 2312, 2018
Schedule B
Map 3**



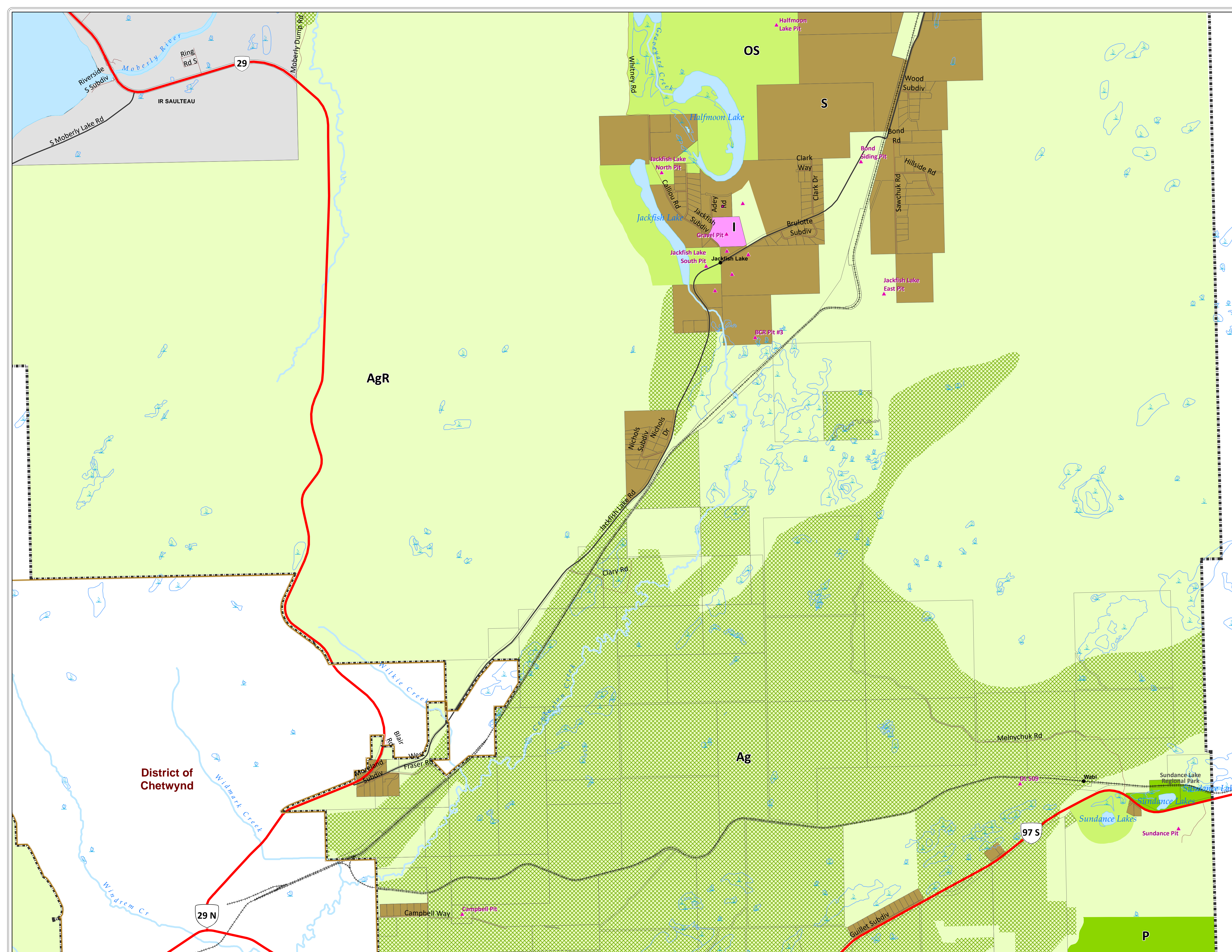
Legend

- OCP Boundary
 - Municipal Boundary
 - Parcels
 - First Nations
 - Rail Line
 - Highways
 - Hard Surface
 - Gravel
 - Lakes
 - River/Stream
 - Swamp / Marsh
 - Rural Community
 - Gravel Deposit
-
- Land Use Designation**
- Agriculture Resource (AgR)
 - Agriculture (Ag)
 - Industrial (I)
 - Moberly Lake Settlement (MLS)
 - Open Space (OS)
 - Parks (P)
 - Settlement (S)

For the most up to date information please visit the Peace River Regional Districts web map at: <https://prrd.bc.ca/services/mapping-gis/web-map/>



Revised: Monday, December 21, 2020
Data Source: Peace River Regional District
Projection: NAD 83 UTM Zone 10



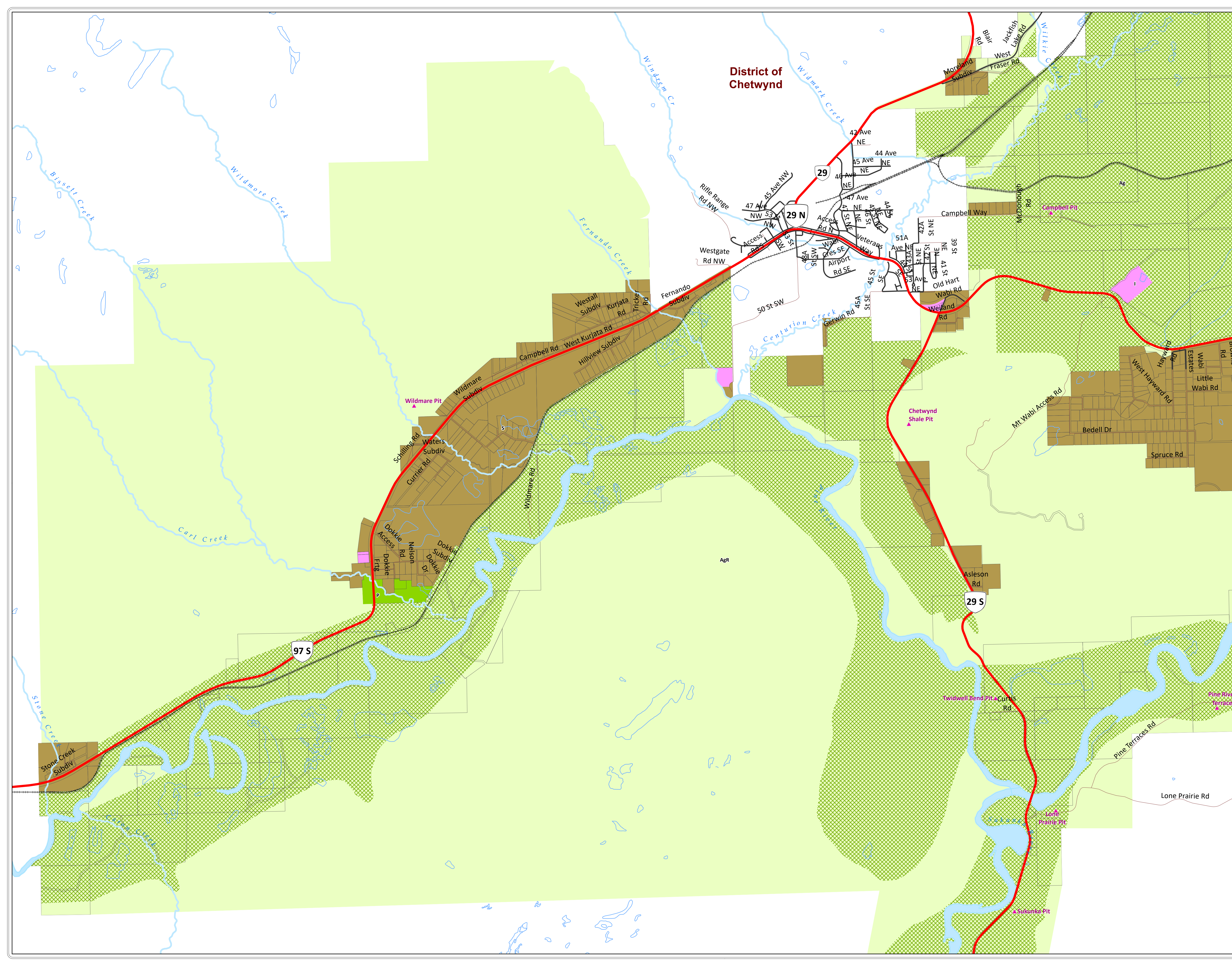
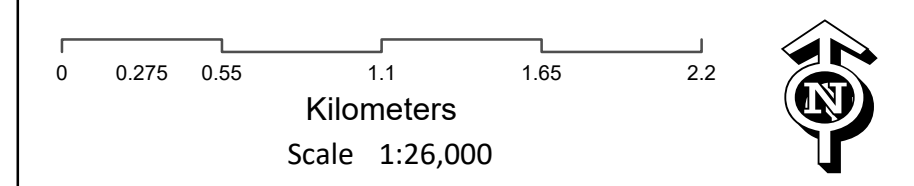
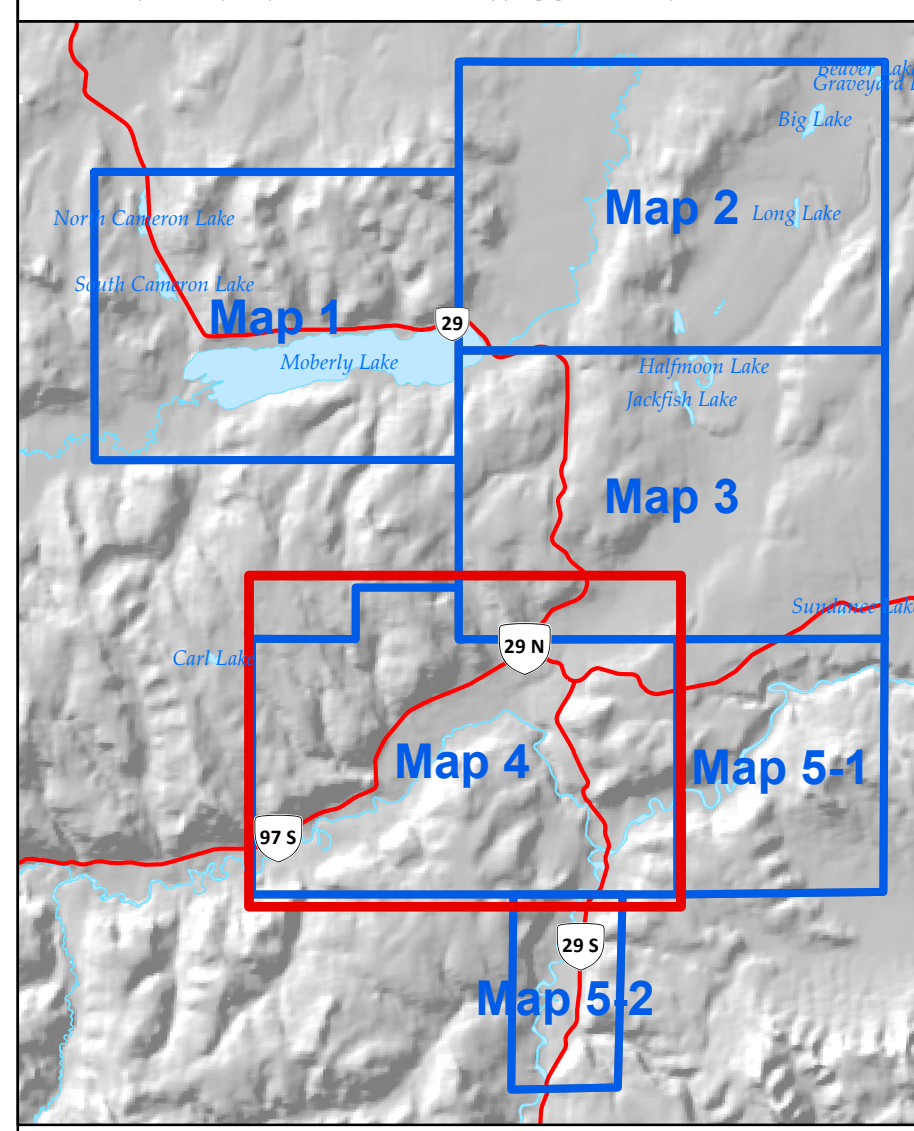
**District of
Chetwynd**

**West Peace Fringe Area
Official Community Plan
Bylaw No. 2312, 2018
Schedule B
Map 4**



- Legend**
- OCP Boundary
 - Municipal Boundary
 - Parcels
 - First Nations
 - Rail Line
 - Highways
 - Hard Surface
 - Gravel
 - Lakes
 - River/Stream
 - Swamp / Marsh
 - Rural Community
 - Gravel Deposit
- Land Use Designation**
- Agriculture Resource (AgR)
 - Agriculture (Ag)
 - Industrial (I)
 - Moberly Lake Settlement (MLS)
 - Open Space (OS)
 - Parks (P)
 - Settlement (S)

For the most up to date information please visit the Peace River Regional District web map at: <https://prrd.bc.ca/services/mapping-gis/web-map/>



**District of
Chetwynd**

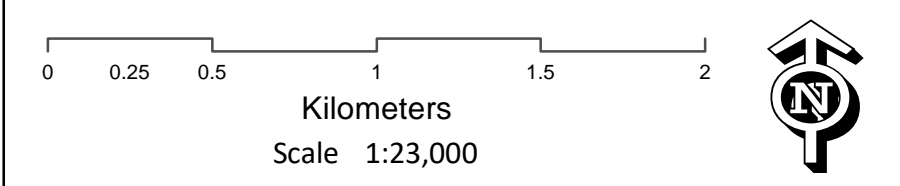
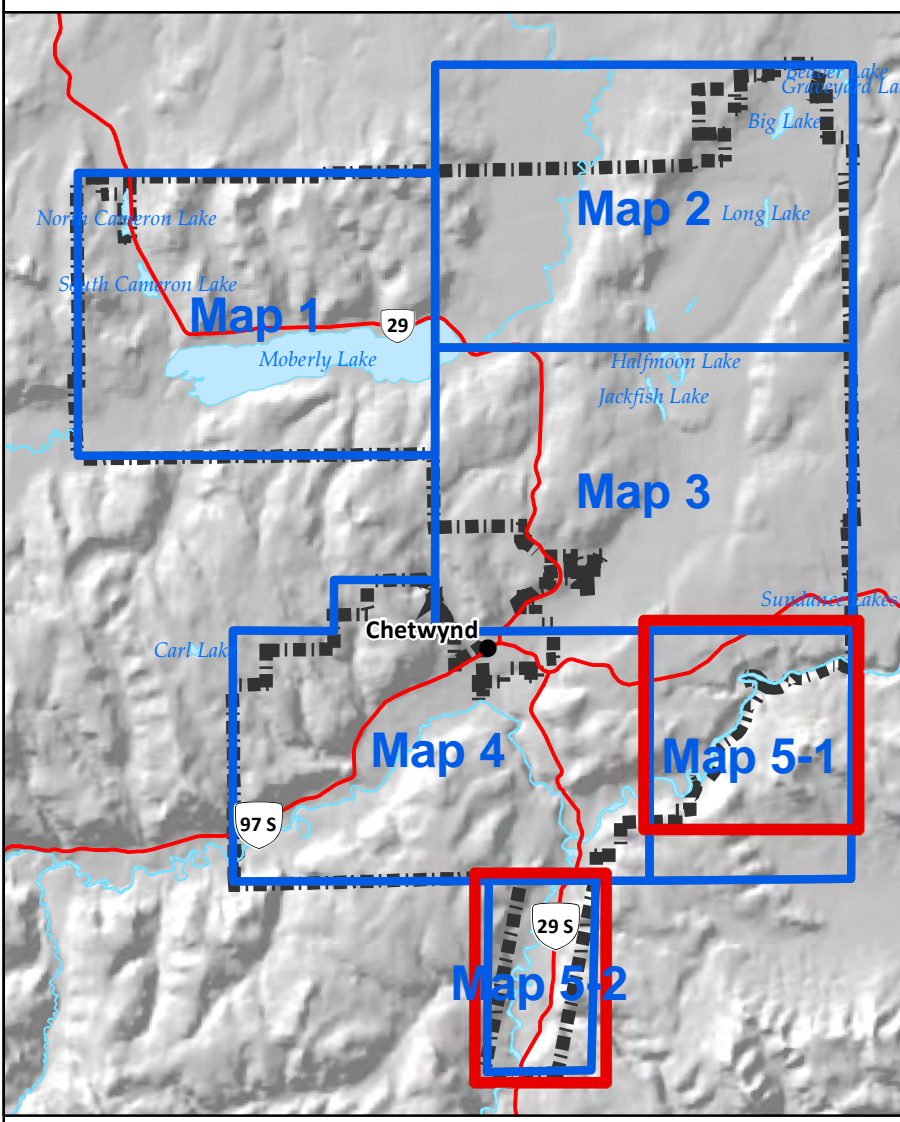
**West Peace Fringe Area
Official Community Plan
Bylaw No. 2312, 2018
Schedule B
Map 5**



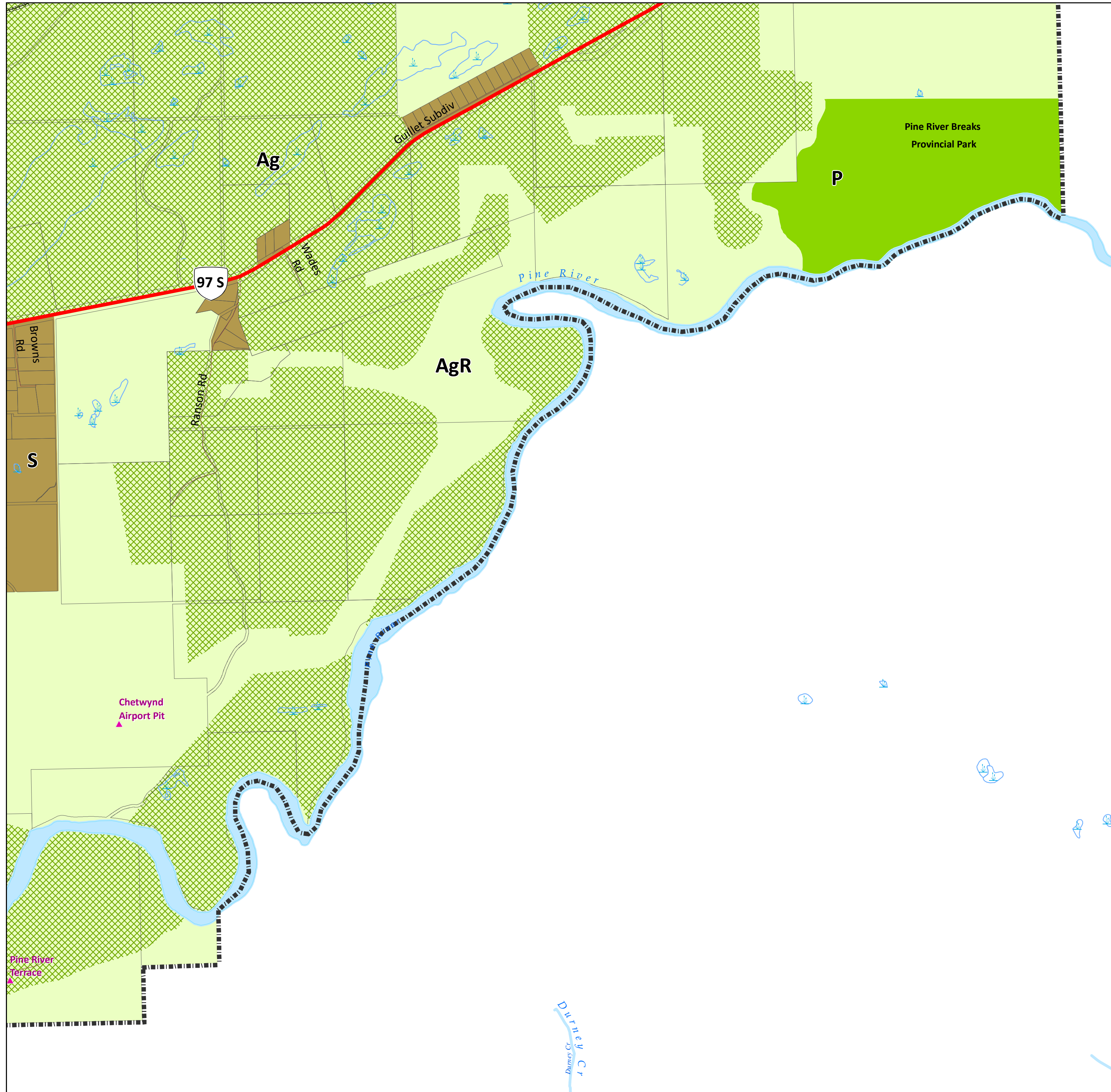
Legend

- OCP Boundary
 - Municipal Boundary
 - Parcels
 - First Nations
 - Rail Line
 - Highways
 - Hard Surface
 - Gravel
 - Lakes
 - River/Stream
 - Swamp / Marsh
 - Rural Community
 - Gravel Deposit
- Land Use Designation**
- Agriculture Resource (AgR)
 - Agriculture (Ag)
 - Industrial (I)
 - Moberly Lake Settlement (MLS)
 - Open Space (OS)
 - Parks (P)
 - Settlement (S)

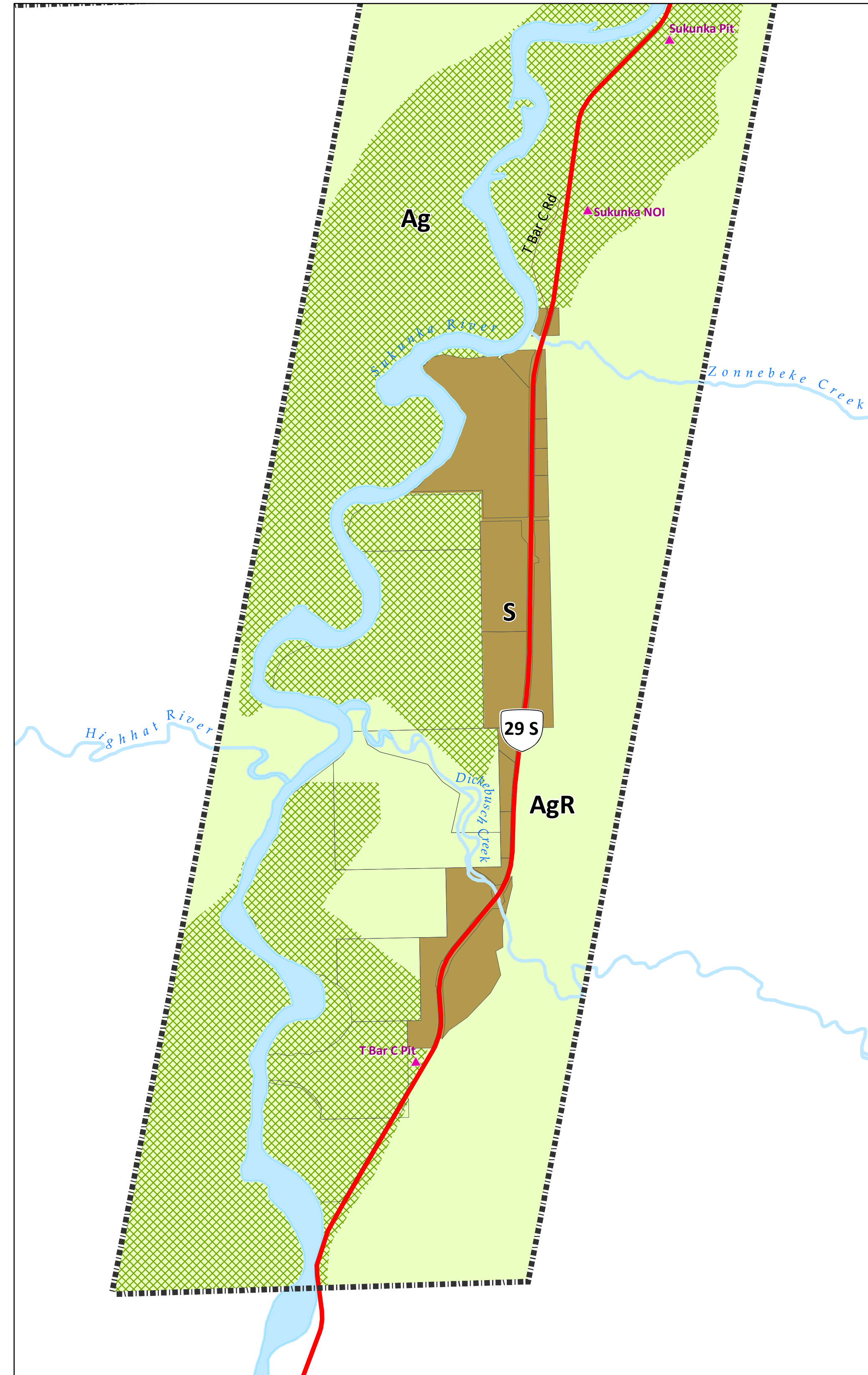
For the most up to date information please visit the Peace River Regional Districts web map at: <https://prd.bc.ca/services/mapping-gis/web-map/>



Revised: Monday, December 21, 2020
Data Source: Peace River Regional District
Projection: NAD 83 UTM Zone 10



Map 5-1



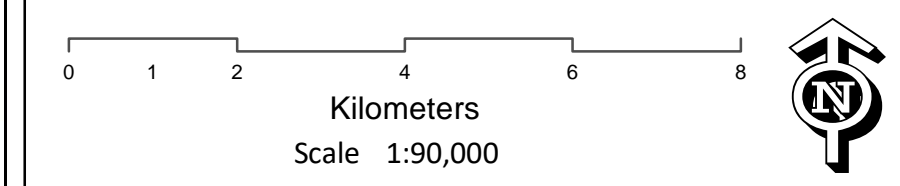
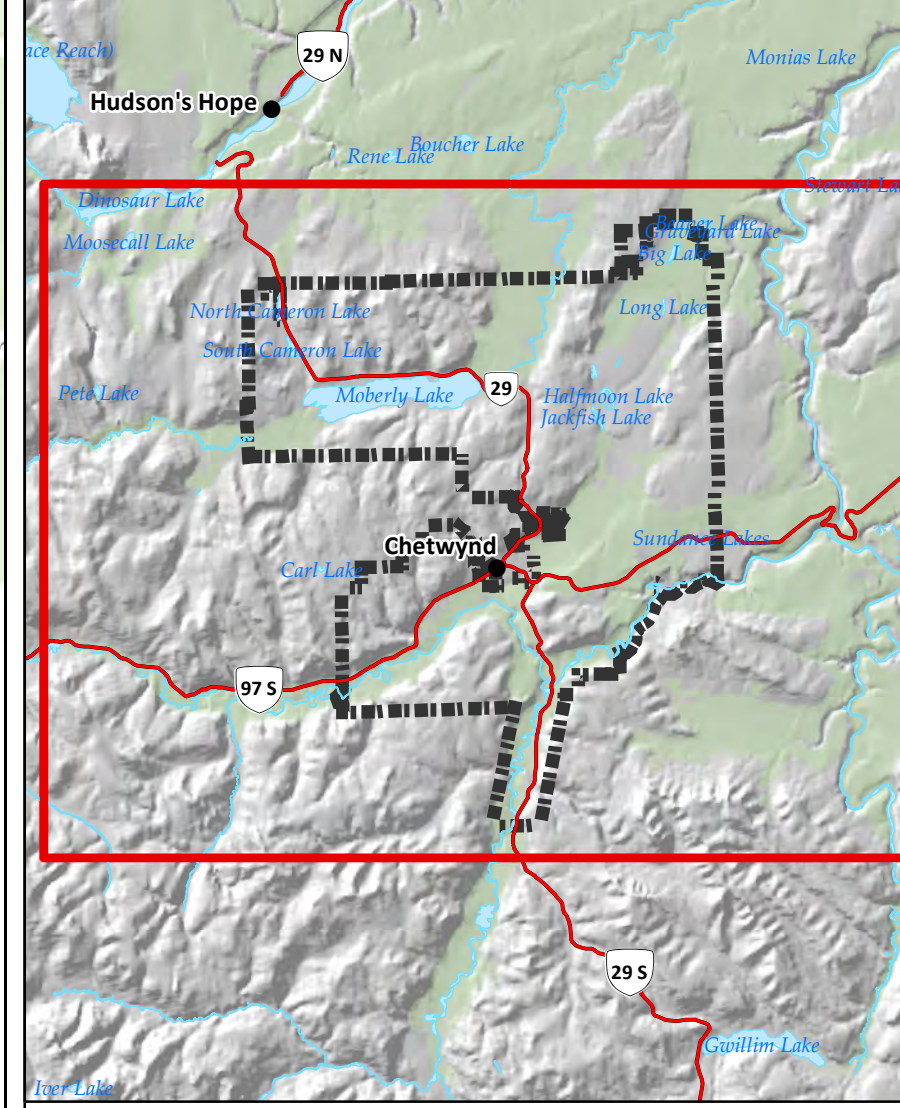
Map 5-2

**West Peace Fringe Area
Official Community Plan
Bylaw No. 2312, 2018
Schedule C
Agricultural Land Reserve**

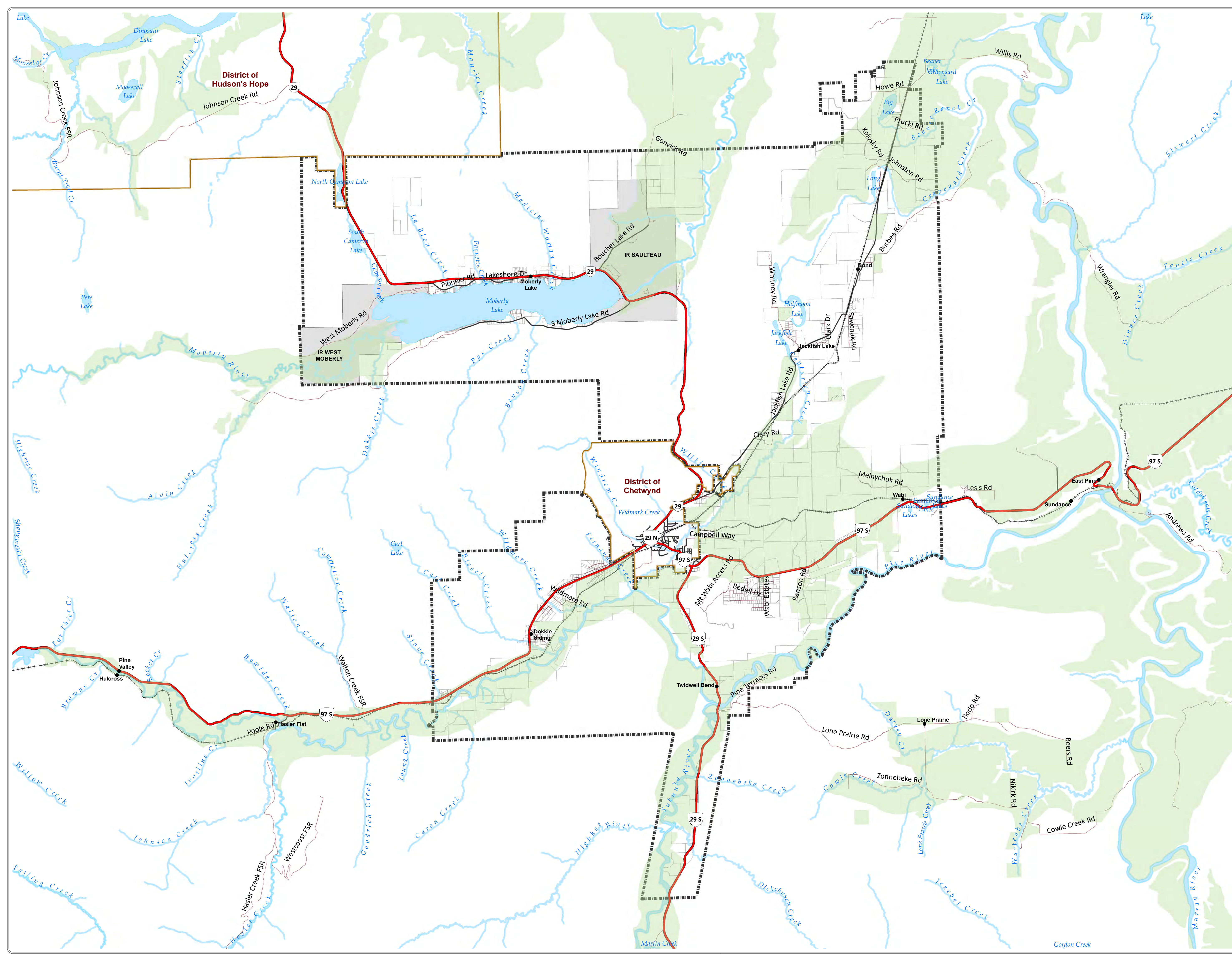


- Legend**
- OCP Boundary
 - Municipal Boundary
 - Parcels
 - First Nations
 - Rail Line
 - Highways
 - Hard Surface
 - Gravel
 - Lakes
 - River/Stream
 - Swamp / Marsh
 - Rural Community
 - Agricultural Land Reserve

For the most up to date information please visit the Peace River Regional Districts web map at: <https://prrd.bc.ca/services/mapping-gis/web-map/>



Revised: Monday, December 21, 2020
Data Source: Peace River Regional District
Projection: NAD 83 UTM Zone 10

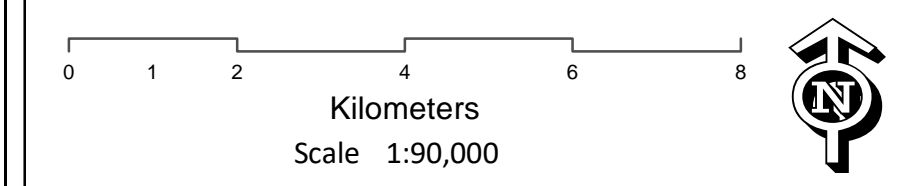
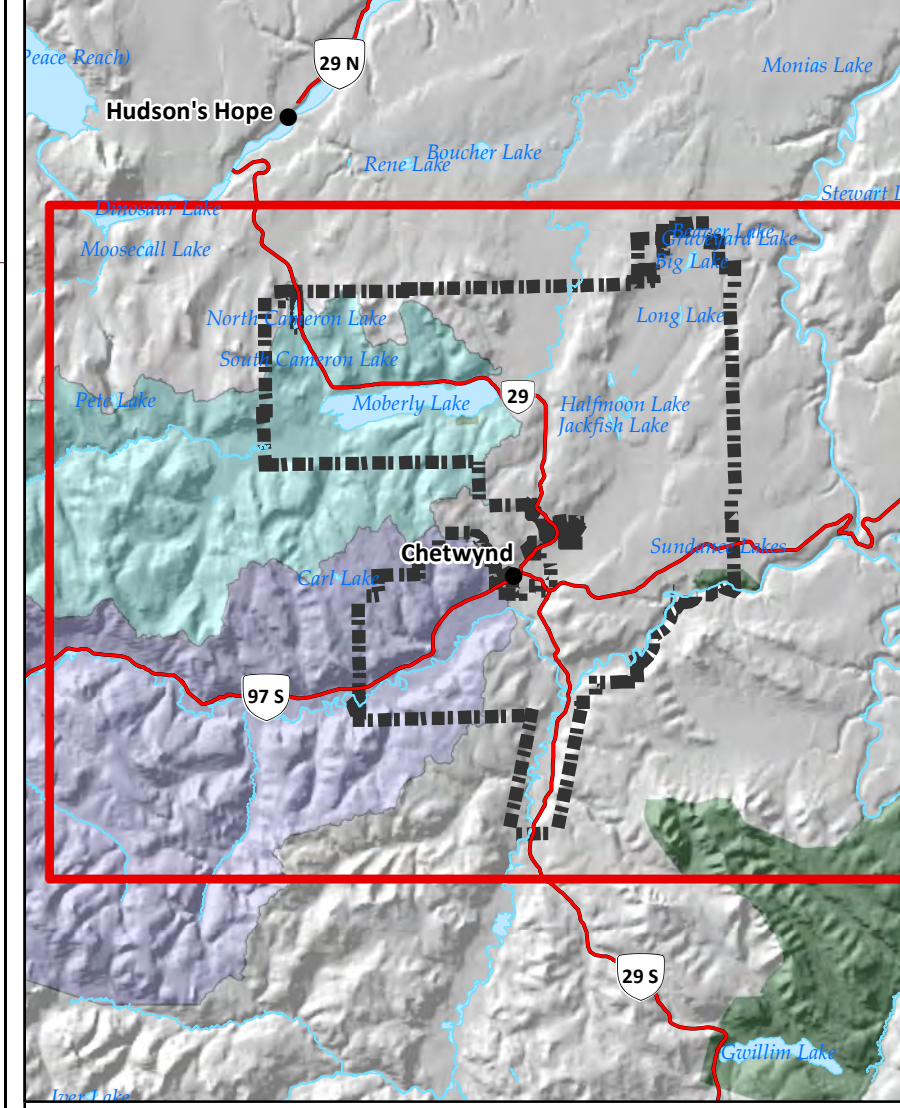


West Peace Fringe Area Official Community Plan Bylaw No. 2312, 2018 Schedule D Parks, Protected Areas & Watersheds

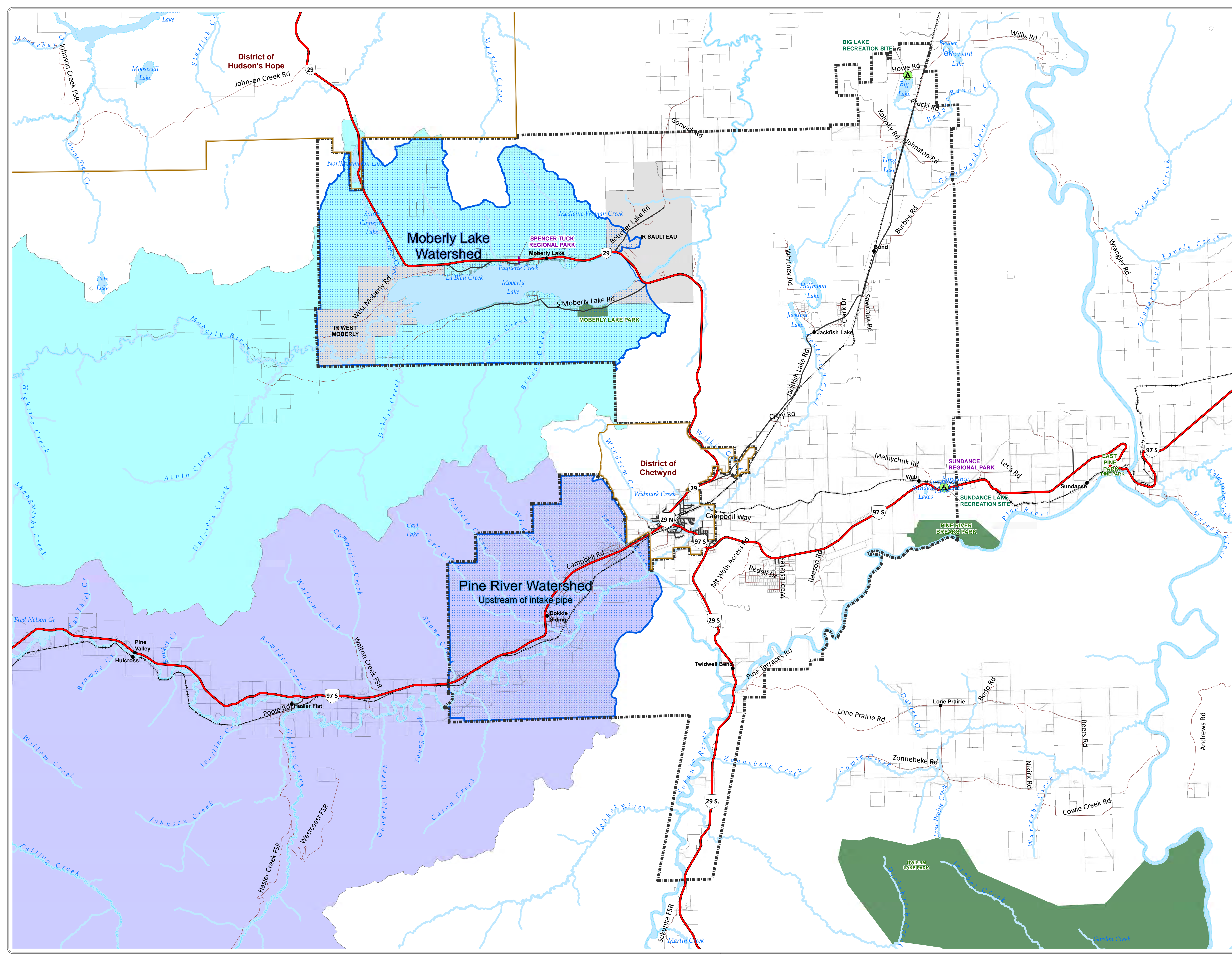


- ### Legend
- OCP Boundary
 - Municipal Boundary
 - Parcels
 - First Nations
 - Rail Line
 - Highways
 - Hard Surface
 - Gravel
 - Lakes
 - River/Stream
 - Swamp / Marsh
 - Rural Community
 - Recreation Site
 - PRRD Regional Park
 - Watershed Area
 - Provincial Park, Protected Area
 - Moberly River Watershed
 - Pine River Watershed

For the most up to date information please visit the Peace River Regional Districts web map at: <https://prrd.bc.ca/services/mapping-gis/web-map/>



Revised: Monday, December 21, 2020
Data Source: Peace River Regional District
Projection: NAD 83 UTM Zone 10

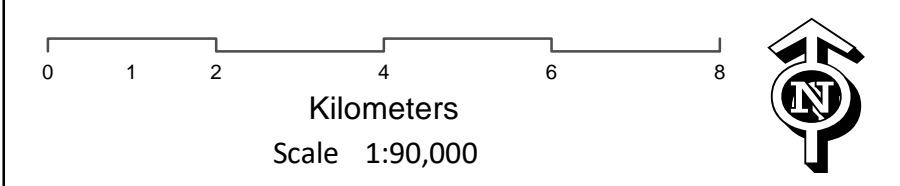
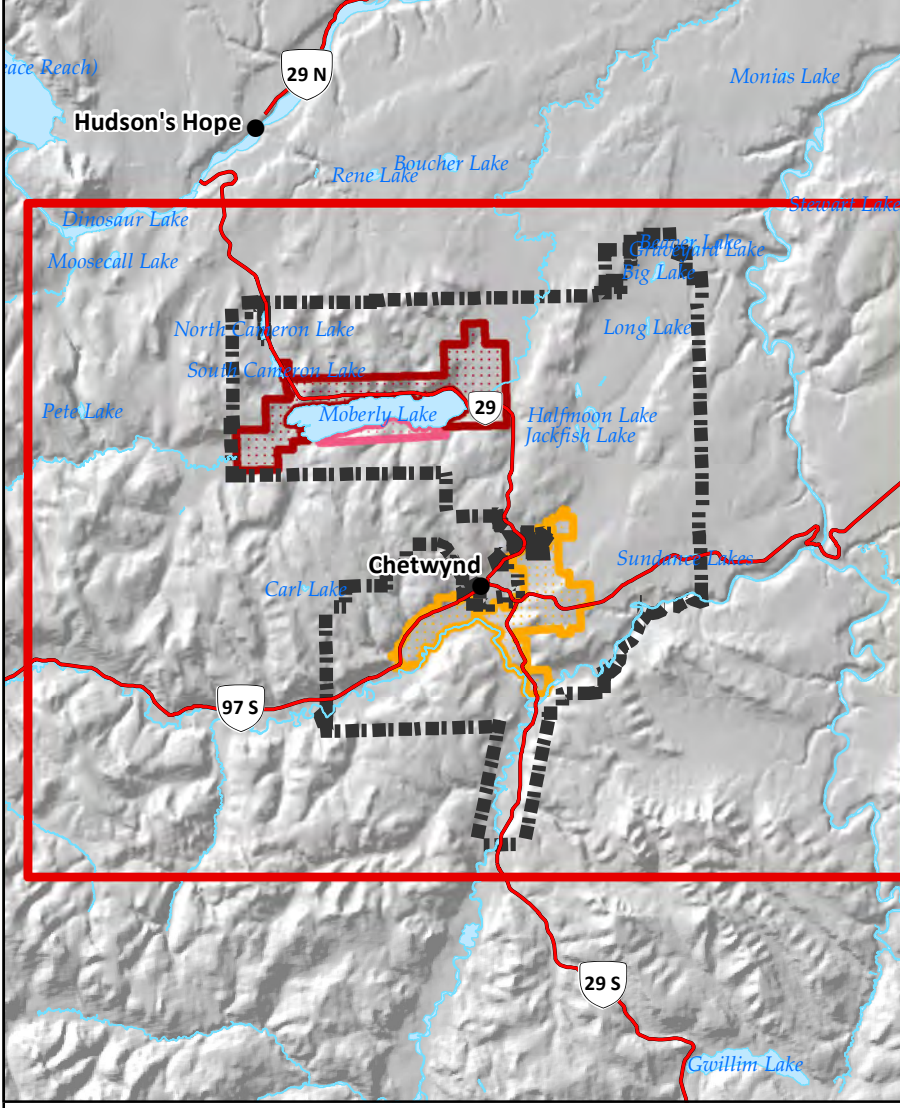


West Peace Fringe Area Official Community Plan Bylaw No. 2312, 2018 Schedule E Public Facilities

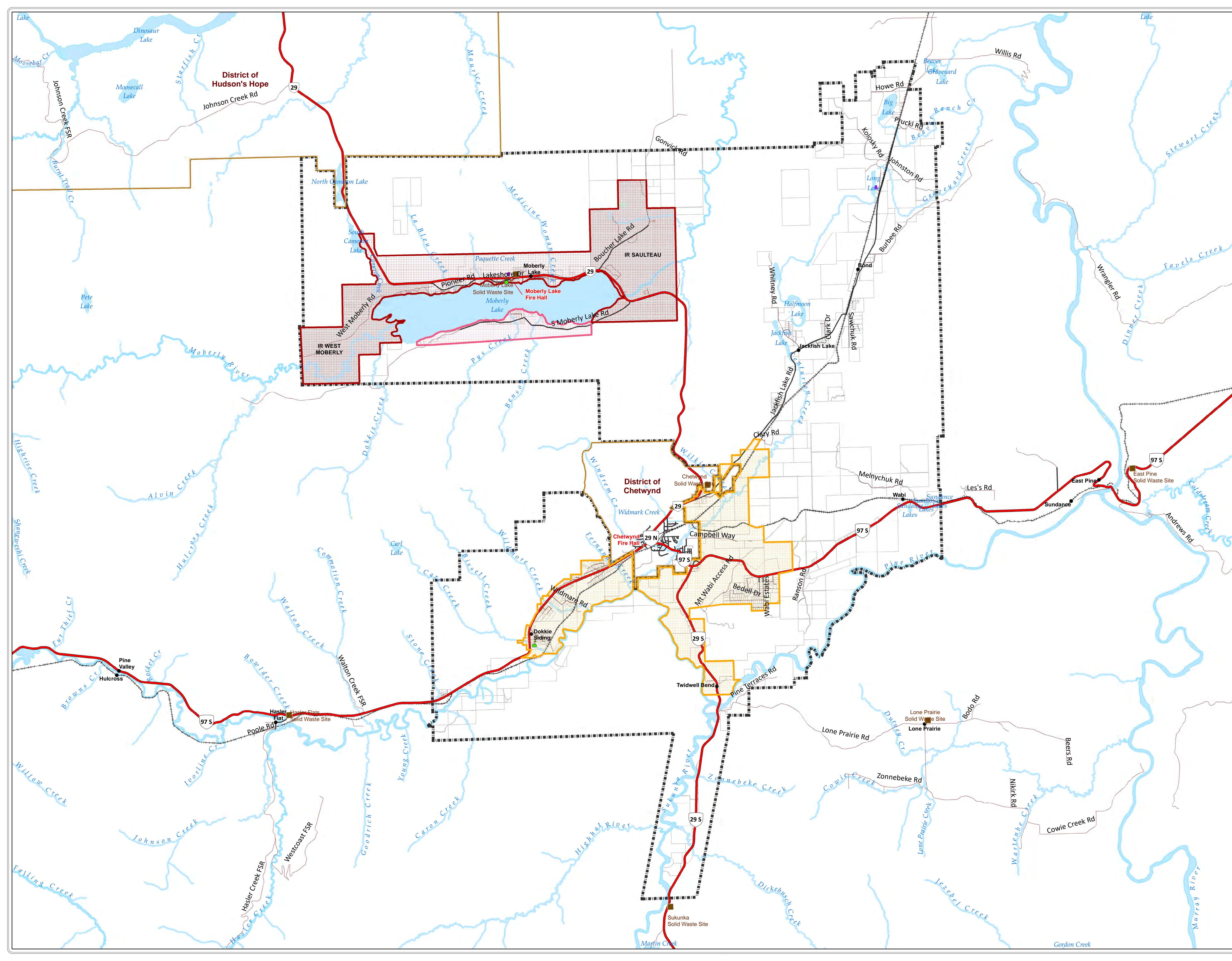


- ### Legend
- OCP Boundary
 - Municipal Boundary
 - Parcels
 - First Nations
 - Rail Line
 - Highways
 - Hard Surface
 - Gravel
 - Lakes
 - River/Stream
 - Swamp / Marsh
 - Rural Community
 - School
 - Community Hall
 - Solid Waste / Transfer Site
 - Fire Department
 - Chetwynd Rural Fire Protection
 - Moberly Lake Fire Protection
 - S Moberly Lake Fire Protection

For the most up to date information please visit the Peace River Regional Districts web map at: <https://prrd.bc.ca/services/mapping-gis/web-map/>



Revised: Monday, December 21, 2020
Data Source: Peace River Regional District
Projection: NAD 83 UTM Zone 10



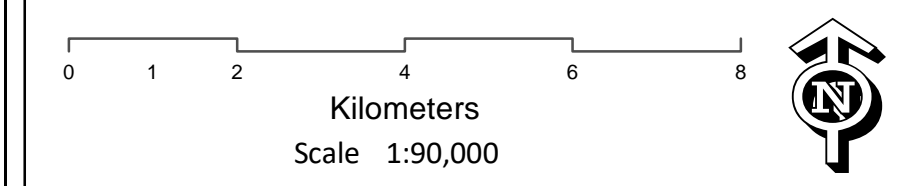
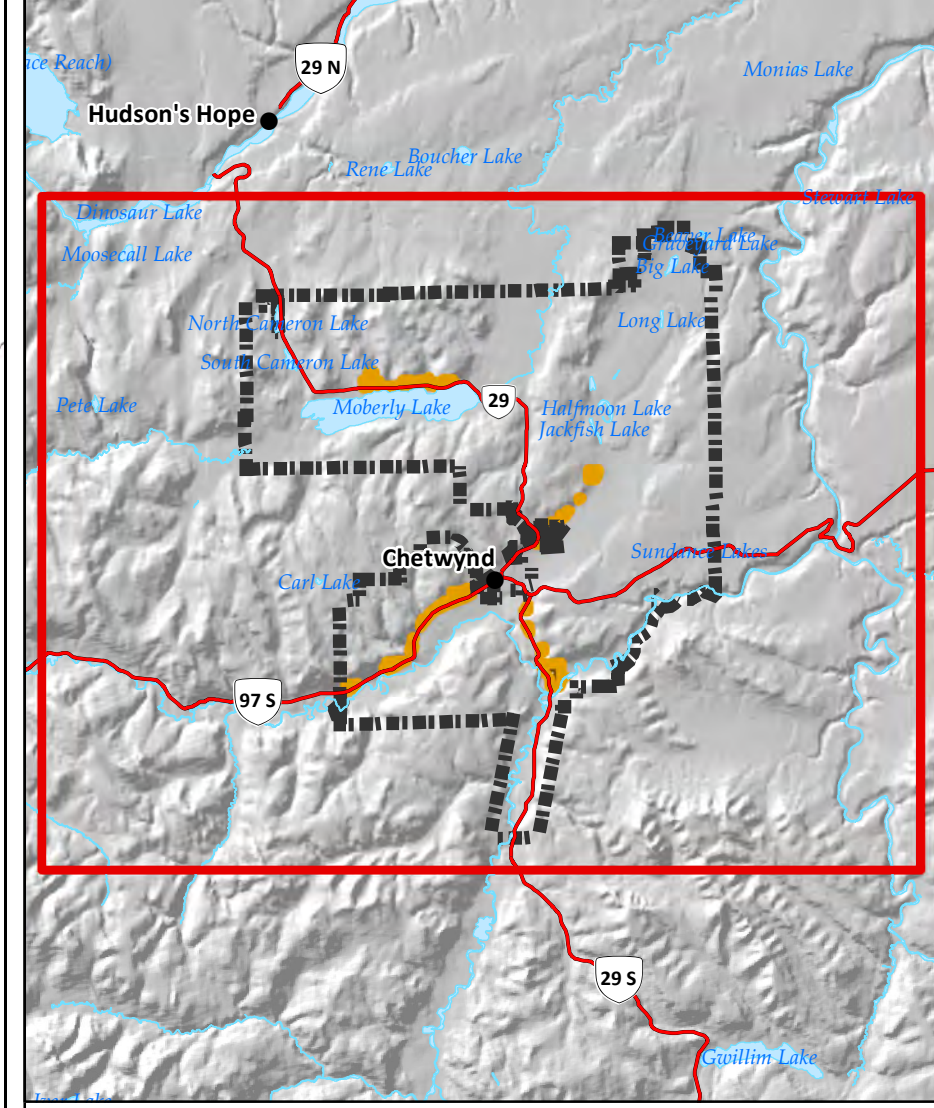
**West Peace Fringe Area
Official Community Plan
Bylaw No. 2312, 2018
Schedule F
Preservation Area**



Legend

- OCP Boundary
- Municipal Boundary
- Parcels
- First Nations
- Rail Line
- Highways
- Hard Surface
- Gravel
- Lakes
- River/Stream
- Swamp / Marsh
- Rural Community
- Preservation Area

For the most up to date information please visit the Peace River Regional Districts web map at: <https://prrd.bc.ca/services/mapping-gis/web-map/>



Revised: Monday, December 21, 2020
Data Source: Peace River Regional District
Projection: NAD 83 UTM Zone 10

