

Community Open Houses - February 14, 15, 16 - 2012

*“Confirming
Community
Direction”*

SOUTH PEACE FRINGE AREA OFFICIAL COMMUNITY PLAN

A new Official Community Plan to guide future land use and development in the South Peace Fringe Area is currently under review. Join us to share your thoughts.

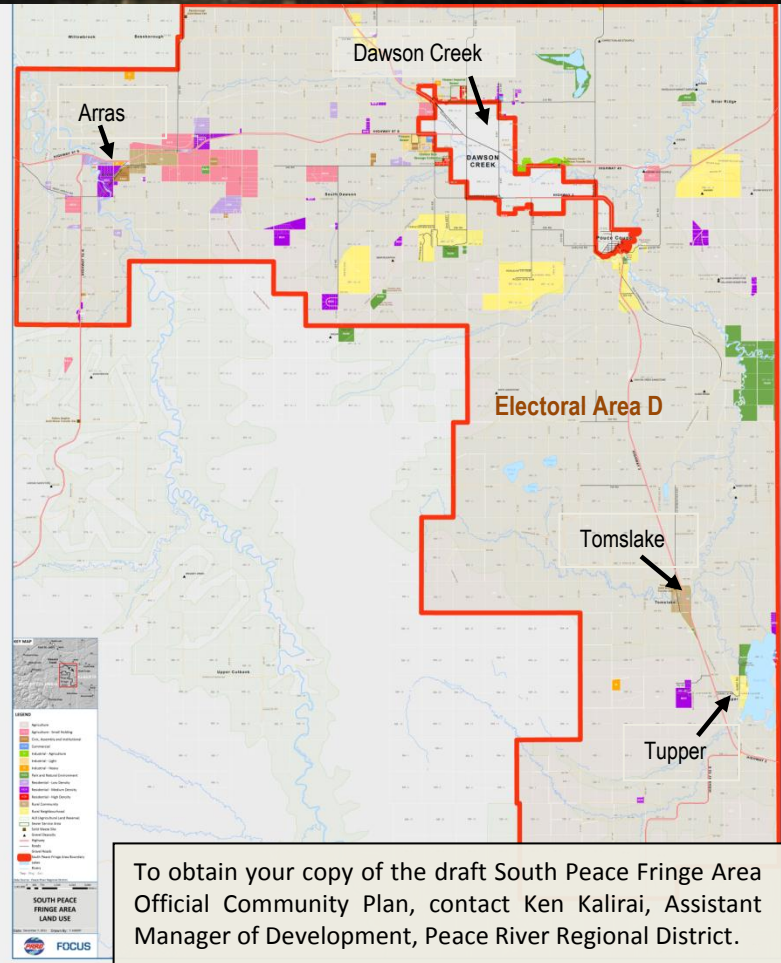
Doors open 6:30 p.m.

Presentation begins at 7:00 p.m.

February 14, 2012 - Arras
Devereux Elementary School

February 15, 2012 - Tomslake
Tupper Community Hall

February 16, 2012 - Dawson Creek
Peace River Regional District Office



To obtain your copy of the draft South Peace Fringe Area Official Community Plan, contact Ken Kalirai, Assistant Manager of Development, Peace River Regional District.

