

August 18, 2010

Ms. Faye Salisbury
Corporate Officer
Peace River Regional District
Box 810,
Dawson Creek, B.C.
V1G 4H8



Faye
Dear Ms. Salisbury:

Re: Invitation to present on Mental Health & Addictions

Thank you for the invitation to present on "Mental Health and Addictions" at your Regional Meeting in Buick on October 28th, 2010 from 11:00-12:00 AM. Northern Health is very pleased to accept this invitation to talk about our services. I spoke with Sheila DeCosta this morning to verbally accept the presentation time and date and this letter will serve as a record of that discussion.

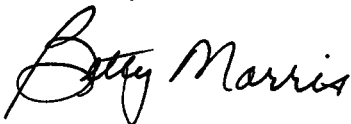
The attendees at this meeting will be Jim Campbell, Executive Lead of Mental Health & Addictions for Northern Health, Tracy McLellan, Director of Mental Health & Addictions Services NE, and Betty Morris, Chief Operating Officer for the Northeast.

Our plan will be to talk about the new Model for delivery of Mental Health Services throughout Northern Health with emphasis on services in the Northeast as well as services that are provided and accessed regionally. We would also like the opportunity to discuss services as they relate to the Community Consultation "Let's Talk about Addictions and Mental Health" held in 2007.

We have noted in your letter of invitation that you would like to receive presentation material no later than October 18th and we will do everything possible to achieve this request. We trust that distributing this information to you electronically will meet your request - please advise if you would like to receive this information in another way.

Again, thank you for the invitation and we look forward to talking with you and the Peace River Regional Board of Directors on October 28th. Thank you also for the invitation to join your team for lunch following our presentation.

Yours truly,



Betty McCracken Morris,
Chief Operating Officer - NE

Copy: Cathy Ulrich, CEO
Jim Campbell, Executive Lead, MH&A
Tracy McLellan, NE Area Director, MH&A
Suzanne Johnston, VP Clinical Programs & Chief Nursing Officer

October 28, 2010

HD-1

Mental Health & Addiction Services North East HSDA

Peace River Regional District

October 28, 2010

Presented by:
Betty Morris, COO
Jim Campbell, Executive Lead
Tracy Mclellan, Director

- Betty Morris - Chief Operating Officer, North East Health Service Delivery Area (NE-HSDA)
- Jim Campbell - Executive Lead, Mental Health and Addictions Services (MH&AS)
- Tracy Mclellan - Director, Mental Health and Addictions Services (MH&AS), North East Health Service Delivery Area (NE-HSDA)

October 28, 2010

- Mental Health and Addictions Services (MH&AS) are provided in an integrated, interdisciplinary team approach.
- Mental Health and Addictions Services uses the Psychosocial Rehabilitation Model of Care in conjunction with a Harm Reduction approach.

- Addictions and mental illness are more prevalent in society than often thought.
- Generally accepted rate is approximately 25%+ of the population will have either a mental health &/or an addiction issue during their life.
- In any one month approximately 14%+ of the population will experience a mental health &/or an addiction issue.
- Statistics indicate approximately 50-70% co-occurrence or dual diagnosis (eg. mental illness and substance misuse).
- The majority of people with a mental illness and or substance misuse, receive services from Family Doctors, Community Services, or through peer support.

This alignment supported MH&AS to:

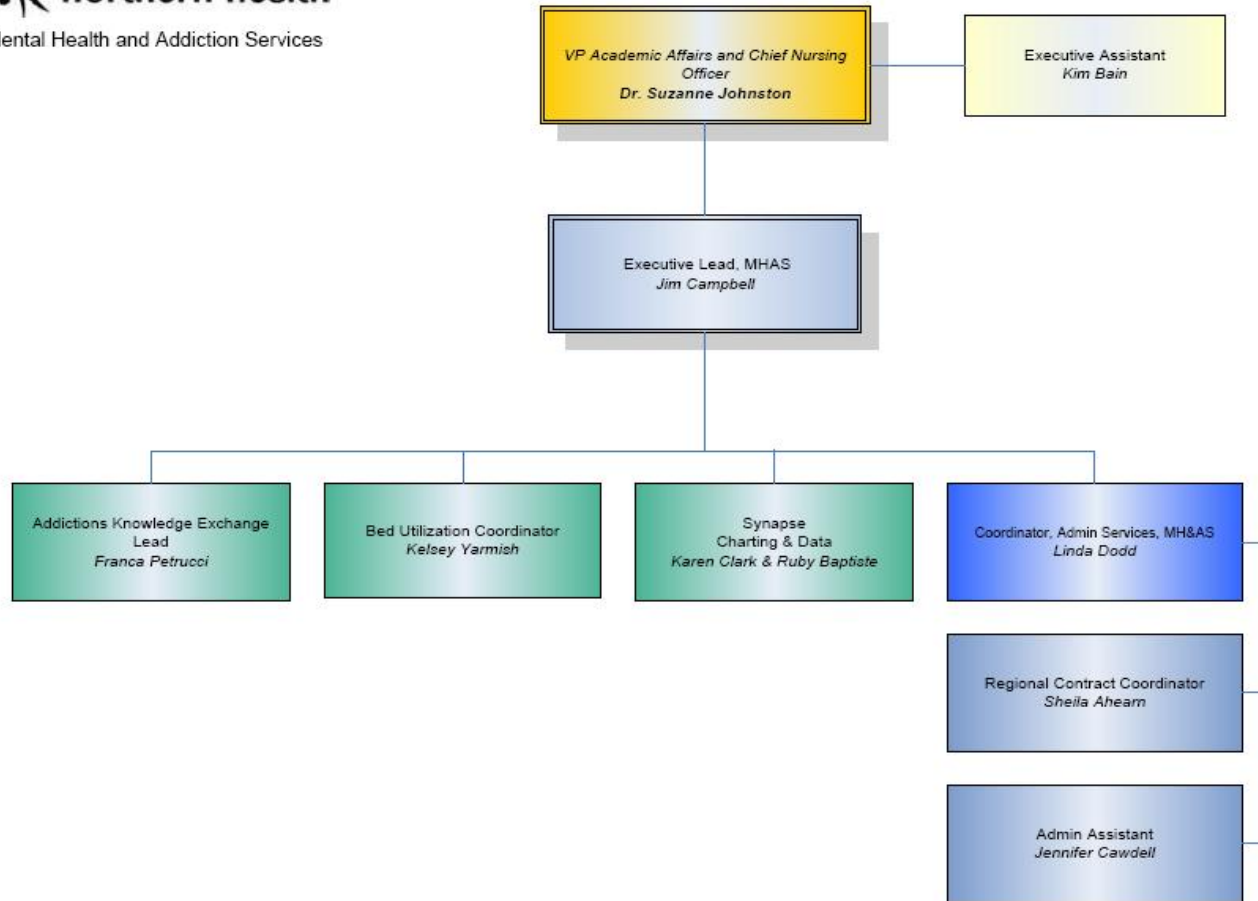
- Develop an Integrated model, to create efficiencies in existing NH services (e.g. integrate Addictions with MH)
- Develop new models of service delivery that are more effective, within existing budgets.

Our present focus includes:

- Supporting NH's Primary Care model (Primary Care Home)
- Integration of services with Physicians, Acute Care, Home & Community Care, Public Health, etc.
- Increasing linkages with Community Services & First Nations Service providers
- Result: a new Org Structure with Integrated services and programs.

MH&A Regional Org Structure

HD-1



October 28, 2010

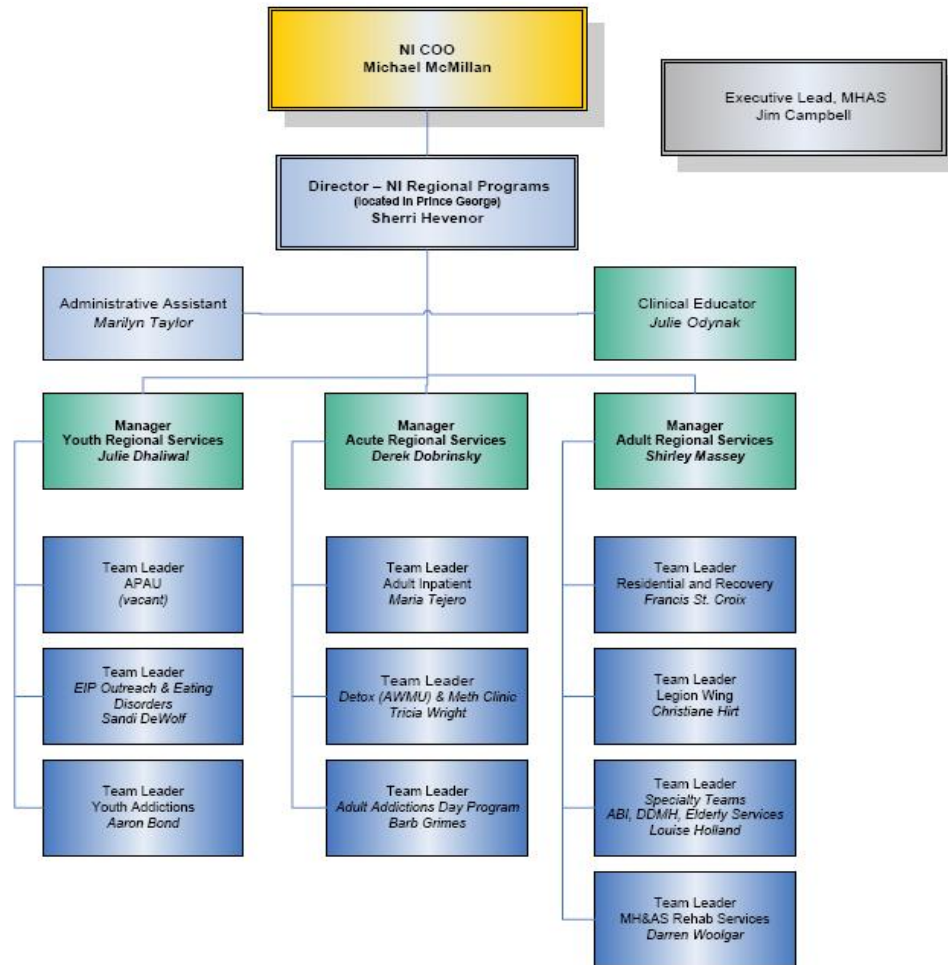


MH&A Regional Programs Org Structure



Mental Health and Addiction Services

HD-1



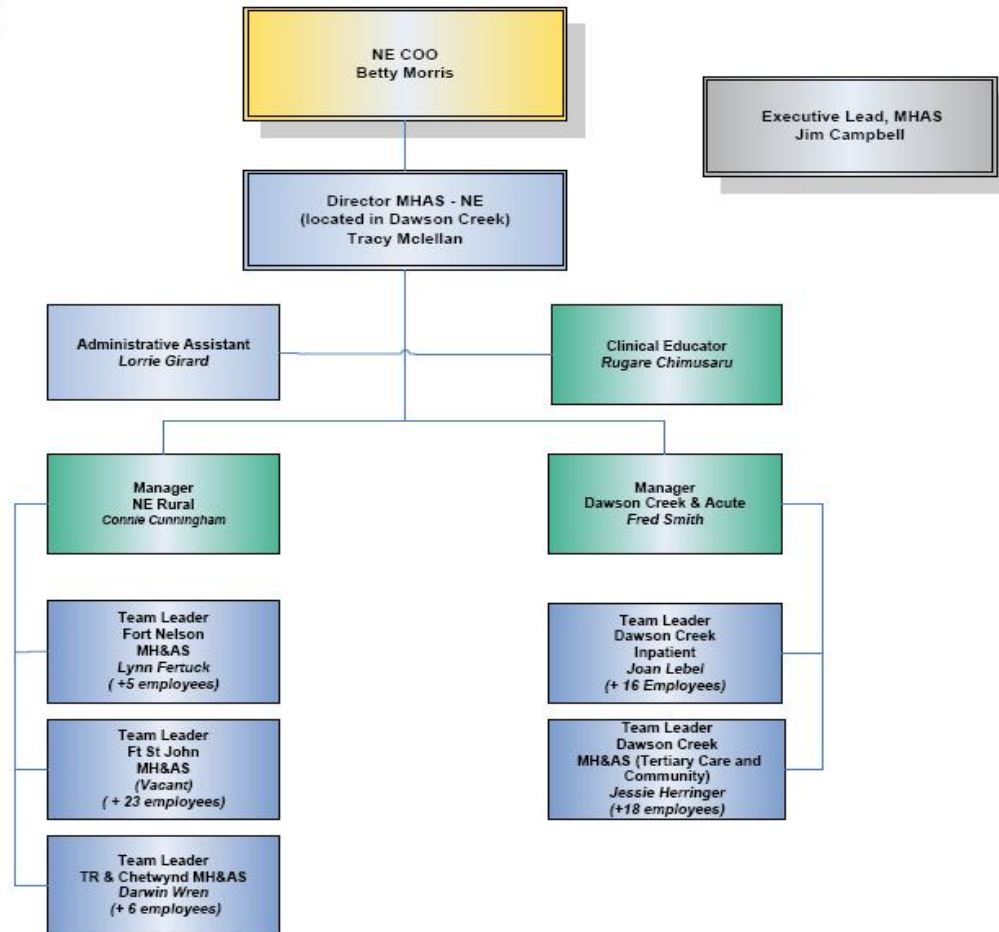
October 28, 2010

- Adult Medical Detox Unit (20 beds in Prince George)
- Youth Treatment Program (7 beds in Prince George)
- Adult Tertiary Psychiatric Rehab and Residential facilities
 - Iris House in Prince George (20 beds)
 - Seven Sisters in Terrace (20 beds)
- Mental Health Speciality Teams (based in PG with contracted services in HSDAs)
 - Acquired Brain Injury (ABI)
 - Developmental Delay Mental Health (DDMH)
- NH MH Geriatric beds
 - Bulkley Lodge (in Smithers) and North Peace Care Center (in Fort St John)
- Hillside in Kamloops (Acute Tertiary Psych assessments)

October 28, 2010

MH&A NE Org Structure

HD-1



October 28, 2010

- NE HSDA Psychiatric Inpatient Unit
 - Dawson Creek & District Hospital
- Designated Observation Units
 - Fort Nelson Hospital
 - Fort St John Hospital and Health Center
- Outreach Psychiatry
- Recovery Services
 - Vocational Rehab program DC
 - Long Stay Community Tertiary Care Program DC
- NE MH&AS Clinical Educator

October 28, 2010

- 15 beds designated facility (D.C.&D.H.)
- Includes 2 Observation Rooms
- Dawson Creek GP's admit to the unit and provide care with support from Psychiatrists and other healthcare professionals
- Clients can be Voluntary or Committed under the Mental Health Act
- Craft Room ,Gym and Workshop, Courtyard and Greenhouse
- 1:1 and Group Therapies

October 28, 2010

NE Outreach Psychiatry

- Provides Psychiatric consultation and assessment in Chetwynd, Tumbler Ridge, Fort St John and Fort Nelson for MH&AS team and local General Practitioners (GPs)
- Provides telephone consultation to the NE General Practitioners
- Travel funding
 - NITAOP (northern isolation and travel assistance outreach program) funding for travel and accommodation
 - Applied for by the H.S.D.A. on an annual basis
- Payment
 - Sessional contracts through MH&AS
 - MSP billing

October 28, 2010

Services Provided by the Mental Health and Addictions Community Teams

HD-1

- CRU - Community Response Unit
 - CAST - Assessments and Short Term Treatment
 - COAST - Longer Term Community Support
- MH&A Services:
- Intake, Screening, assessment and referral;
 - Psycho-educational groups, Adventure-Based Learning for Youth, Community School Presentations;
 - Social Work, Home Visits, and Medication Management;
 - Cognitive Behavioral Therapy, Motivational Interviewing, Concurrent Disorder Treatment
- 4 contracts with Friendship Centers for culturally responsive Addictions services.

October 28, 2010

Total of 57 Clinical ftes for North East HSDA:

- 3 ftes - Tumbler Ridge, Chetwynd and outreach to Hudson Hope
- 5 ftes - Fort Nelson
- 21 ftes - Fort St John
- 17 ftes- Dawson Creek Community
- 11 ftes - Dawson Creek Regional Inpatient Unit

Non-clinical ftes:

9 Clerical Support

1 Clinical Educator

1 Administrative Assistant

2 Managers

1 Director

October 28, 2010

- Child and Youth Mental Health (M.C.F.D.)
- BC Schizophrenia Society (B.C.S.S)
- RCMP
- Ministry of Housing & Social Development (M.H.&S.D.)
- BC Housing
- Community Corrections (Probation)
- Forensics

- Service Delivery to be reflective of Concurrency (mental health and addiction issues)
- Concurrent Day Treatment Services (pilot Fort St John)
- Supporting NH's Primary Care model (Primary Care Home)
- Integration of services with Physicians, Acute Care, Home & Community Care, Public Health, etc.
- Increasing linkages with Community Services & First Nations Service providers

October 28, 2010